

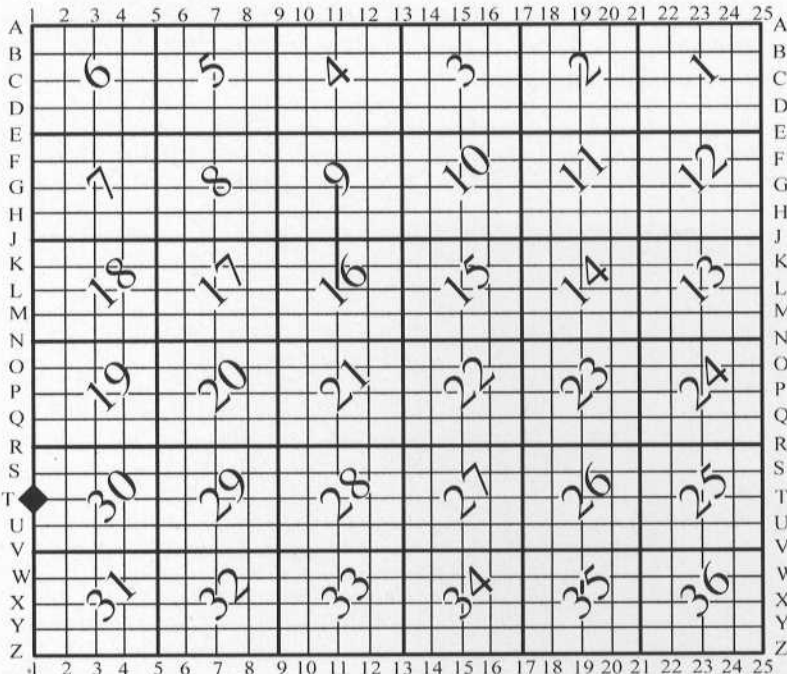
U.S. PUBLIC LAND SURVEY MONUMENT RECORD

For Public Land Survey Corners In:
T. 3 N. - R. 10 E. of the 4th P.M.

WI ADMINISTRATIVE CODE A-E 7.08 REQUIREMENT

CORNER CODE INDEX

(PLACE SYMBOL AT PROPER PLSS CORNER LOCATION)



MAGNOLIA TWP
ROCK COUNTY WI

COORDINATES

(GNSS DERIVED VIA WISCORS)

NORTHING: 273280.11 ELEV: N/A
EASTING: 400532.08

Hor. Datum: WISCRS-ROCK, (NA2011)

Vertical Datum: NAVD 88, (If applicable)

(a) LEGEND

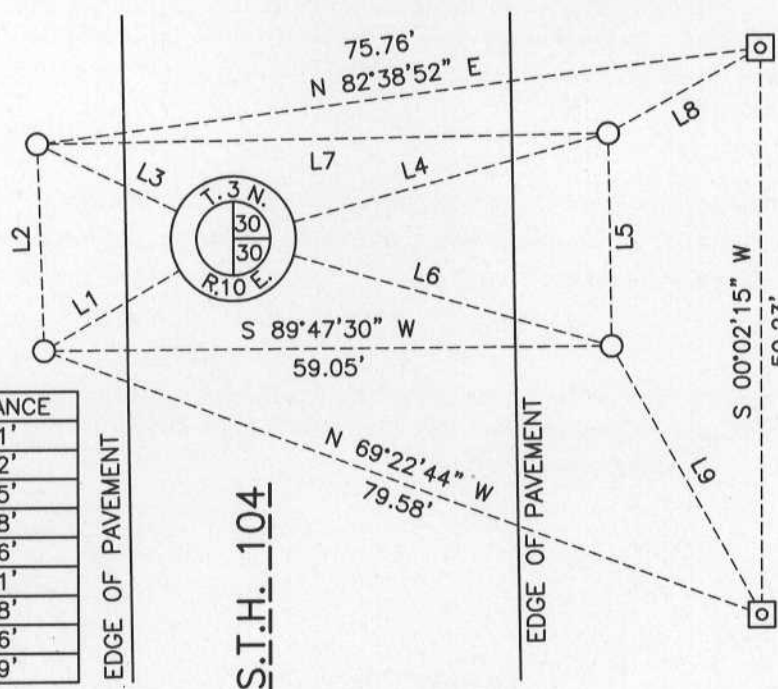
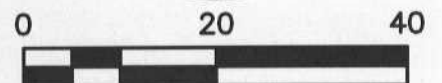
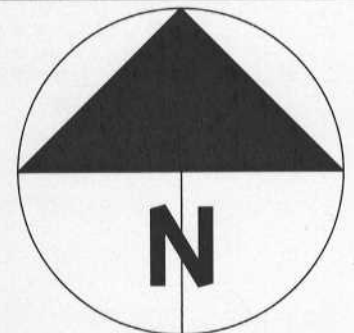
- DIMPLE SET IN ALUMINUM WDOT DISK FOUND IN CONCRETE
- ALUMINUM NAIL "SURVEY MARK" NAIL SET, (See note)



- COTTON GIN SPINDLE SET, (CGS), IN PLACE OF DuraNail FOUND. The DuraNail was referenced out 0.4' in two directions, pulled, and the CGS was set in its place. The erroneous nearby steel spike found, (See Page 2), and set deep, beneath the CGS.

NOTE:

This PLSS corner is in an area of cut in excess of 100 feet. The aerial photos in this area have lots of shadows so one is not incorporated hereon. The nails are near the base of the easterly wall, 12-18" above the adjacent grade. A flat area was chiseled into the wall and a 2" aluminum nail was set in a pre-drilled hole that reads "Survey Mark".



LINE TABLE

LINE	BEARING	DISTANCE
L1	S 59°27'08" W	22.81'
L2	N 01°37'52" W	21.52'
L3	S 63°54'48" E	22.55'
L4	N 74°35'23" E	40.58'
L5	S 00°43'46" E	22.16'
L6	N 73°53'33" W	41.01'
L7	N 89°09'55" E	59.38'
L8	N 82°38'52" E	75.76'
L9	S 00°02'15" W	59.23'

Field book: Magnolia 2013-14

Page: 80

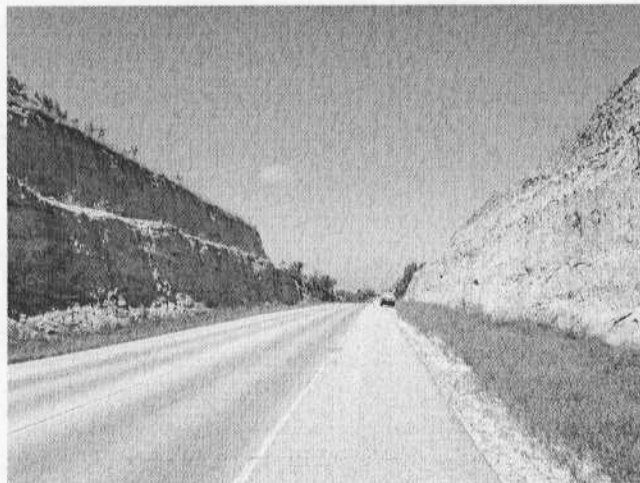
Page 1 of 2

Corner code: T1

B) Describe any record evidence, monument evidence, occupational evidence, testimonial evidence or any other material evidence you considered, and whether the monument was found or placed.

I found four witnesses and the PLSS monument per the T-1(2) tie-sheet, (Barnes-2007). I also found the broken survey spike near the PLSS corner, (DuraNail), as called on the same. The witnesses are WDOT aluminum disks in concrete that were not stamped/dimpled when set. Prior to surveying any monuments I referenced the DuraNail, pulled it and set a cotton gin spindle in its place; I drove the nearby broken survey spike deep and beneath the cotton gin spindle. In addition, having all witness monuments in-place and undisturbed, I set dimples in all four WDOT disks to assist with future retracement; all measurements to the dimpled monuments closely approximate those of Barnes. Because all monuments are newly dimpled and within 0.05' of the Barnes dimensions, I do not show record distances. Lastly, I set two aluminum survey markers in pre-drilled holes per the map, (also, see the note on the map page).

Photo of corner location, (looking north)



C) Was the corner restored through acceptance of (1) an obliterated evidence location, or, (2) a found perpetuated location?

Found perpetuated location.

D) Describe any material discrepancy between the location of the corner as restored or reestablished and the location of that corner as previously restored or reestablished by distance and direction. Show the discrepancy on the plan view drawing under (a), above. Show the distances between the corner as previously restored or reestablished and (1) the corner as restored or reestablished, and (2) to at least 4 of the witness monuments shown on the drawing in (a), above.

I did not find a discrepancy between the corner restored and a previously documented corner location. *Discrepancy* being defined as *disagreeing* with a corner location, *not* as noting dimensional differences between current/former tie sheets due to measuring methods. The current and *most recent* tie-sheet dimensions filed for the corner are noted.

(E) Was the corner reestablished through lost corner proportionate methods? If so, show the method, including the directions and distances to other public land survey corners used as evidence or used for proportioning the corner location.

N/A

I, **Jason R. Houle**, hereby certify that the corner location as identified by the corner code index was determined by me under my direction and control and that this U.S. Public Land Survey Monument Record is correct and complete to the best of my knowledge and belief.

CORNER CODE: T-1
(A.E. 7.08 REQUIREMENT)
Page 2 of 2

