

U.S. PUBLIC LAND SURVEY MONUMENT RECORD

For Public Land Survey Corners In: WI ADMINISTRATIVE CODE A-E 7.08 REQUIREMENT

T. 3 N. - R. 10 E. of the 4th P.M.

CORNER CODE INDEX

(PLACE "◆" SYMBOL AT PROPER PLSS CORNER LOCATION)

	1	2	3	4	5	6	7	8	9	10	11	12	13	14	15	16	17	18	19	20	21	22	23	24	25		
A																											B
B																											C
C																											D
D																											E
E																											F
F																											G
G																											H
H																											I
J																											J
K																											K
L																											L
M																											M
N																											N
O																											O
P																											P
Q																											Q
R																											R
S																											S
T																											T
U																											U
V																											V
W																											W
X																											X
Y																											Y
Z																											Z

MAGNOLIA TWP
ROCK COUNTY WI

COORDINATES

(GNSS DERIVED VIA WISCORS)

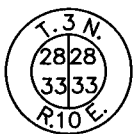
NORTHING: 270625.46 ELEV: N/A
EASTING: 413946.96

Hor. Datum: WISCRS-ROCK, (NA2011)

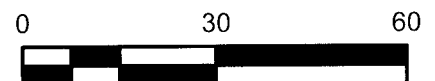
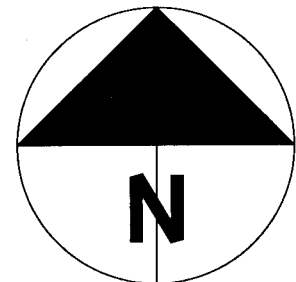
Vertical Datum: NAVD 88, (If applicable)

(a) LEGEND

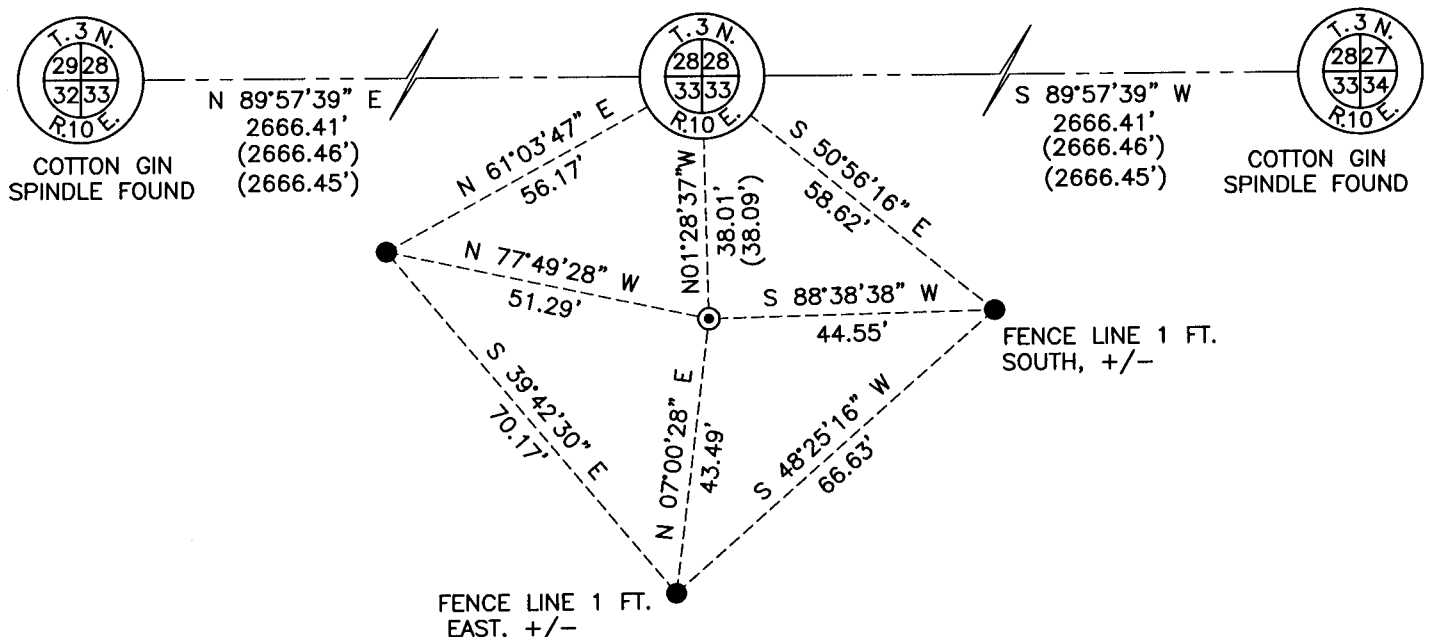
- - 3/4" x 24" REBAR SET W/RED CAP
- ⊙ - IRON REBAR FOUND, (FENCE CORNER 5.5' WEST, +/-)
- (#) - PREVIOUS TIE-SHEET DIMENSION



— SET 3/4" x 24" IRON REBAR
* Replaces a disturbed rebar and is 6", +/-, south of the south edge-of-pavement.



C.T.H. B



Field book: Magnolia 2013-14

Page: 52

Page 1 of 2

Corner code: V-11

B) Describe any record evidence, monument evidence, occupational evidence, testimonial evidence or any other material evidence you considered, and whether the monument was found or placed.

No modern era County Survey Records and/or tie-sheets indicate a monument ever being found or set. A survey by Ron Combs, (M14902 – 2004), shows a found iron pin at the corner. I believe I found the pin referenced by Combs bent/disturbed; Combs does not reference distances to either the SW or SE corners of 28-3-10.

My split distance of 2666.41 feet compares to 2666.46, (Barnes-1990), and 2666.45, (Lee-1973). I set a new ¾"x24" iron rebar at the midway point between the SW & SE corners of Section 28. The corner is situated 6", +/-, south of the C.T.H. "B" pavement and set 6", +/-, deep.

I referenced one rebar from the Combs survey and set 3 per the map.

C) Was the corner restored through acceptance of (1) an obliterated evidence location, or, (2) a found perpetuated location?

Obliterated evidence location, (fencing)

D) Describe any material discrepancy between the location of the corner as restored or reestablished and the location of that corner as previously restored or reestablished by distance and direction. Show the discrepancy on the plan view drawing under (a), above. Show the distances between the corner as previously restored or reestablished and (1) the corner as restored or reestablished, and (2) to at least 4 of the witness monuments shown on the drawing in (a), above.

I did not find a discrepancy between the corner restored and a previously documented corner location. *Discrepancy* being defined as *disagreeing* with a corner location, *not* as noting dimensional differences between current/former tie sheets due to measuring methods.

(E) Was the corner reestablished through lost corner proportionate methods? If so, show the method, including the directions and distances to other public land survey corners used as evidence or used for proportioning the corner location.

N/A

I, Jason R. Houle, hereby certify that the corner location as identified by the corner code index was determined by me under my direction and control and that this U.S. Public Land Survey Monument Record is correct and complete to the best of my knowledge and belief.

CORNER CODE: V-11
(A.E. 7.08 REQUIREMENT)