

U.S. PUBLIC LAND SURVEY MONUMENT RECORD

For Public Land Survey Corners In: WI ADMINISTRATIVE CODE A-E 7.08 REQUIREMENT

T. 3 N. - R. 10 E. of the 4th P.M.

CORNER CODE INDEX

(PLACE "◆" SYMBOL AT PROPER PLSS CORNER LOCATION)

A	1	2	3	4	5	6	7	8	9	10	11	12	13	14	15	16	17	18	19	20	21	22	23	24	25	A
B																										B
C	6																									C
D																										D
E																										E
F																										F
G	7																									G
H																										H
J																										J
K																										K
L	18																									L
M																										M
N																										N
O																										O
P	19																									P
Q																										Q
R																										R
S																										S
T	30																									T
U																										U
V																										V
W																										W
X	31																									X
Y																										Y
Z																										Z
	1	2	3	4	5	6	7	8	9	10	11	12	13	14	15	16	17	18	19	20	21	22	23	24	25	

MAGNOLIA TWP
ROCK COUNTY WI

COORDINATES

(GNSS DERIVED VIA WISCORS)

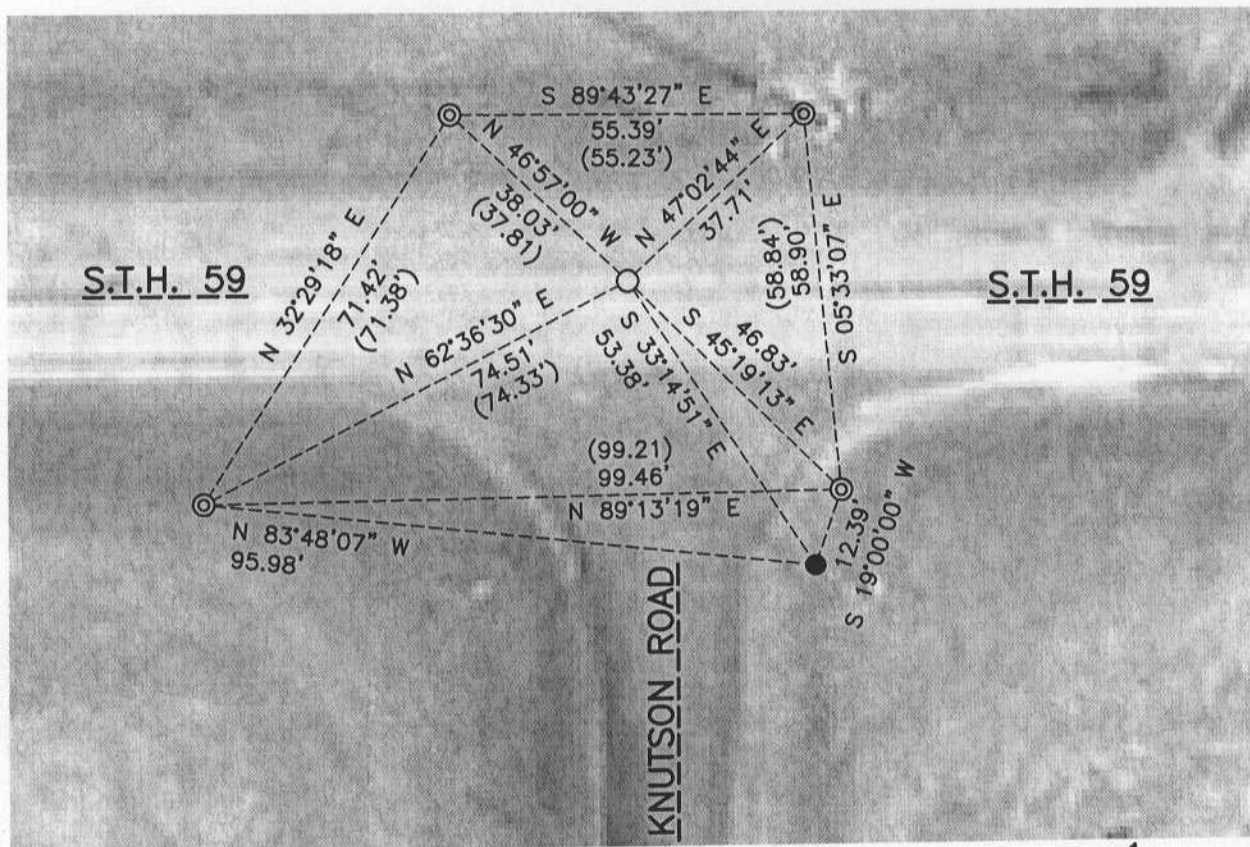
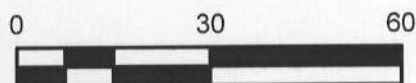
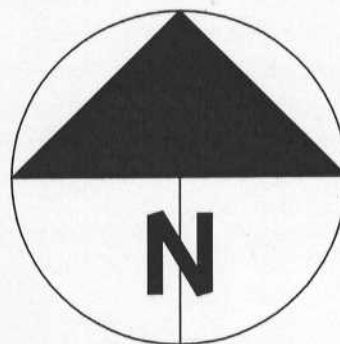
NORTHING: 289219.81 ELEV: N/A
EASTING: 416427.07

Hor. Datum: WCCS-ROCK, (NA2011)

Vertical Datum: NAVD 88, (If applicable)

(a) LEGEND

- - 5/8" x 24" REBAR SET, (RED CAP W/"PLSS WITNESS")
- - COTTON GIN SPINDLE SET
- ⊙ - IRON PIPE FOUND
- (#) - PREVIOUS DIMENSION ON TIE-SHEET RECORD



B) Describe any record evidence, monument evidence, occupational evidence, testimonial evidence or any other material evidence you considered, and whether the monument was found or placed.

At this location I found four witness pipes as shown on tie-sheet G-13 prepared by Don Barnes on May 18, 1989. Based the tie distances and a metal detector, I believe the aluminum monument exists under the relatively new Hwy. 59 pavement. By way of a distance/distance intersection from the two easterly witness pipes, I calculated the corner and set a cotton gin spindle per the map.

C) Was the corner restored through acceptance of (1) an obliterated evidence location, or, (2) a found perpetuated location?

Restored by acceptance of obliterated evidence location.

D) Describe any material discrepancy between the location of the corner as restored or reestablished and the location of that corner as previously restored or reestablished by distance and direction. Show the discrepancy on the plan view drawing under (a), above. Show the distances between the corner as previously restored or reestablished and (1) the corner as restored or reestablished, and (2) to at least 4 of the witness monuments shown on the drawing in (a), above.

Any dimensional discrepancies are within acceptable tolerances and noted on the face of the map.

(E) Was the corner reestablished through lost corner proportionate methods? If so, show the method, including the directions and distances to other public land survey corners used as evidence or used for proportioning the corner location.

N/A

I, Jason R. Houle, hereby certify that the corner location as identified by the corner code index was determined by me under my direction and control and that this U.S. Public Land Survey Monument Record is correct and complete to the best of my knowledge and belief.

CORNER CODE: G-13(1)
(A.E. 7.08 REQUIREMENT)

