

MICROFILMED PLAT AND RECORD

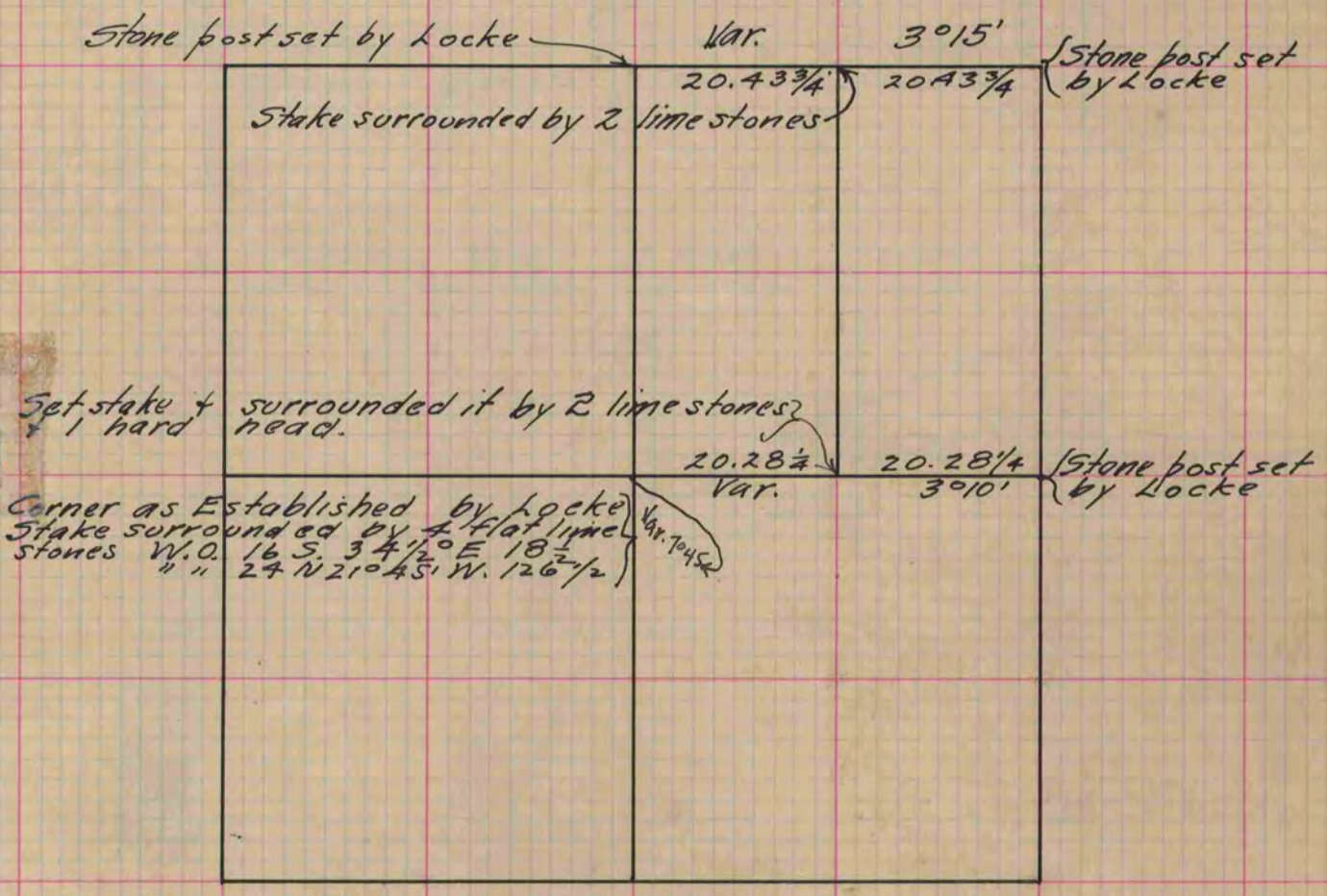
17  
V-2

Of a Survey on Section 12 T 2 R 10 E. of the 4 P. M. in Spring Valley Township  
Rock County, Wisconsin, made January the 26<sup>th</sup> 1870

I hereby certify that the following is a correct record of said survey as made by me.

COUNTY BUILDING  
CITY OF JANESVILLE

(Signed) Edward Ruger Deputy  
R.H.B. County Surveyor.



Copied from Page 15 Vol. 2. Original County Surveyors Record