

# PLAT AND RECORD

**MICROFILMED**

Of a Survey on Section 15 T 2 R 10 E. of the 4 P. M. in Spring Valley Township  
Rock County, Wisconsin, made April the 2nd 1857

I hereby certify that the following is a correct record of said survey as made by me.

COUNTY BUILDING  
CITY OF JANESVILLE

(Signed) Joseph Church by Chas H. Brown  
R.H.B. Deputy County Surveyor.

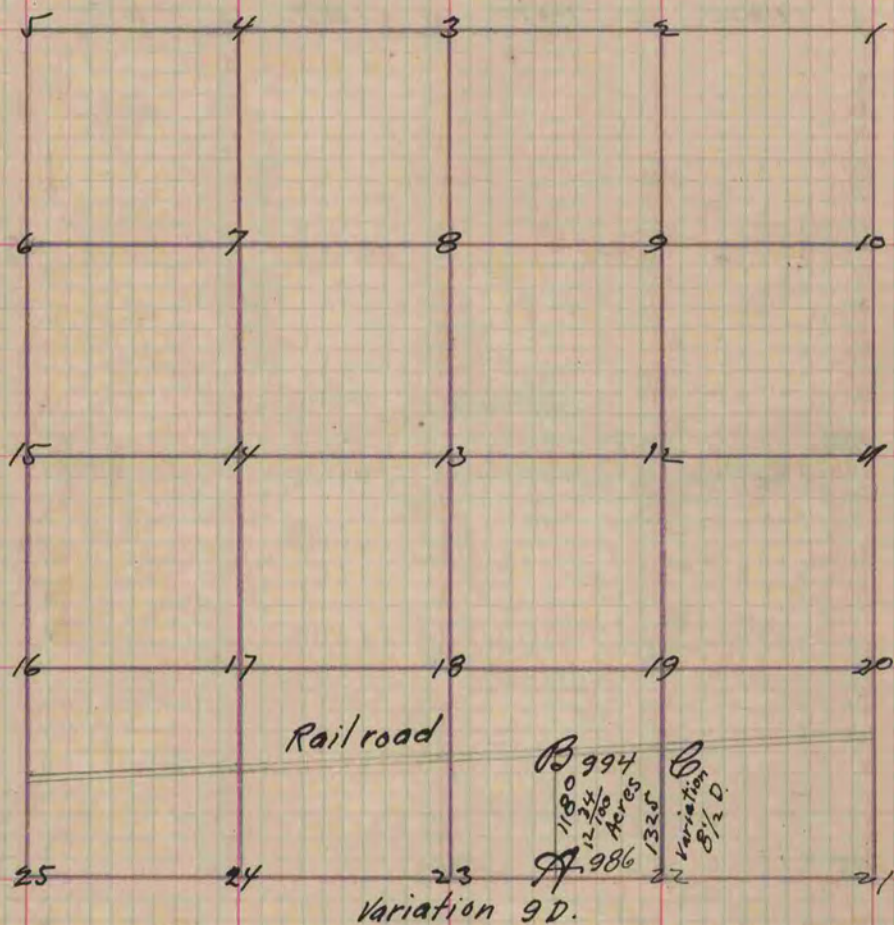


Fig 22	Stump	N 18 W	101 1/2
	"	S 57 W.	85
A	Br. O. 10 inch	N 37 W	51
	Stump	S 24 1/2 W.	33 1/4
B.	Br. O. 12 inch	S. 77 W.	154 1/2
	" " 10 "	S. 75 E	61 3/4
C	Stump	S 57 1/2 E	37
	"	S 49 1/2 W.	111

Copied from Page 73 Vol. One. Original County Surveyors Record