

PLAT AND RECORD

MICROFILMED

Of a Survey on Section 3 T 1 R 14 E. of the 4 P. M. in Clinton Township

Rock County, Wisconsin, made October the 9th 1866

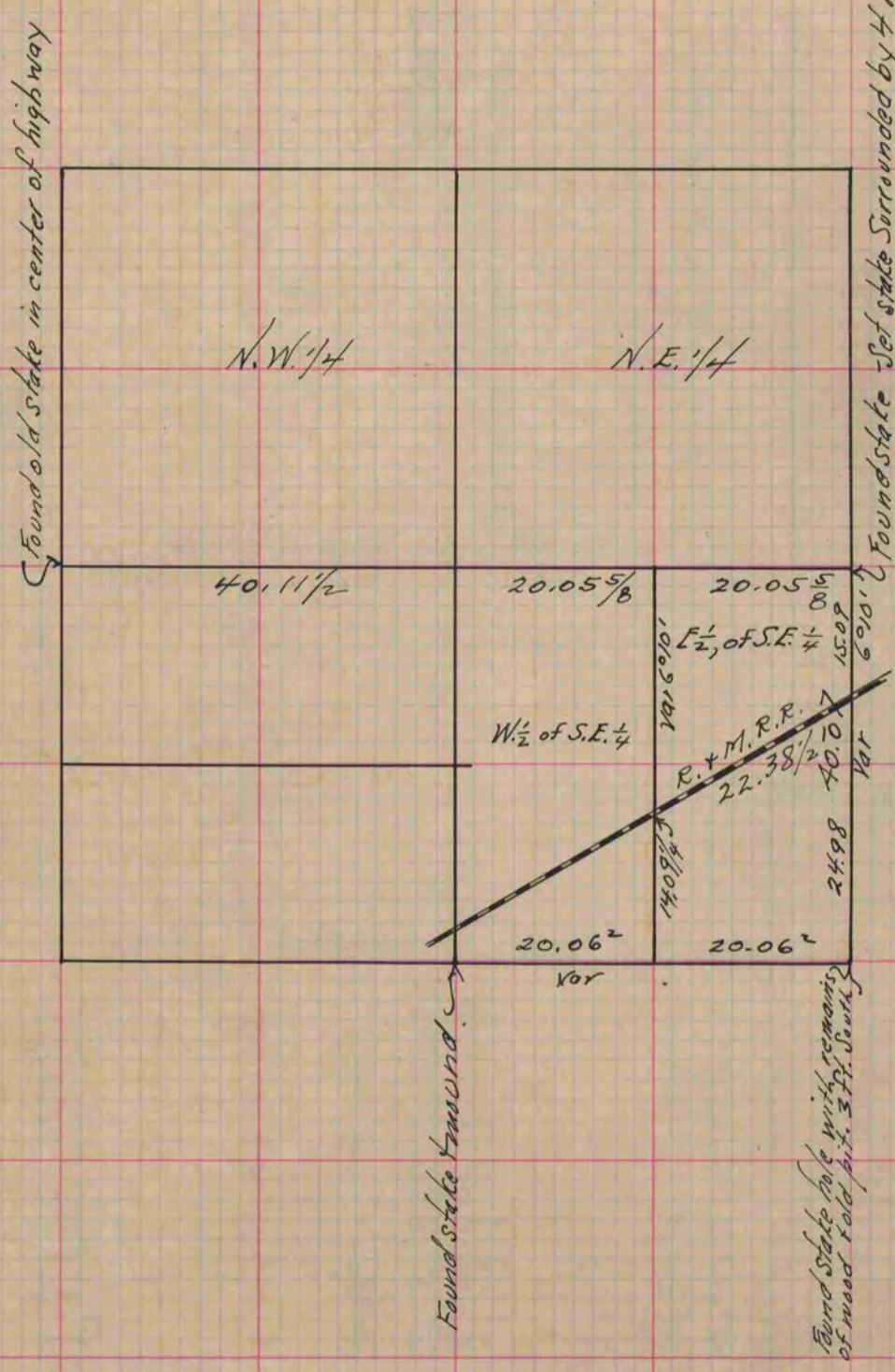
I hereby certify that the following is a correct record of said survey as made by me.

COUNTY BUILDING
CITY OF JANESVILLE

(Signed) S. D. Locke
R.H.B.

County Surveyor.

I. A. Snyder + Self Chainmen.



Copied from Page 239 Vol. 1. Original County Surveyors Record