

# PLAT AND RECORD

COUNTY BUILDING  
CITY OF JANESVILLE

VOL. 5

Of a Survey on Section 36 T 2 R 13 E. of the 4 P. M. in LA PRAIRIE Township

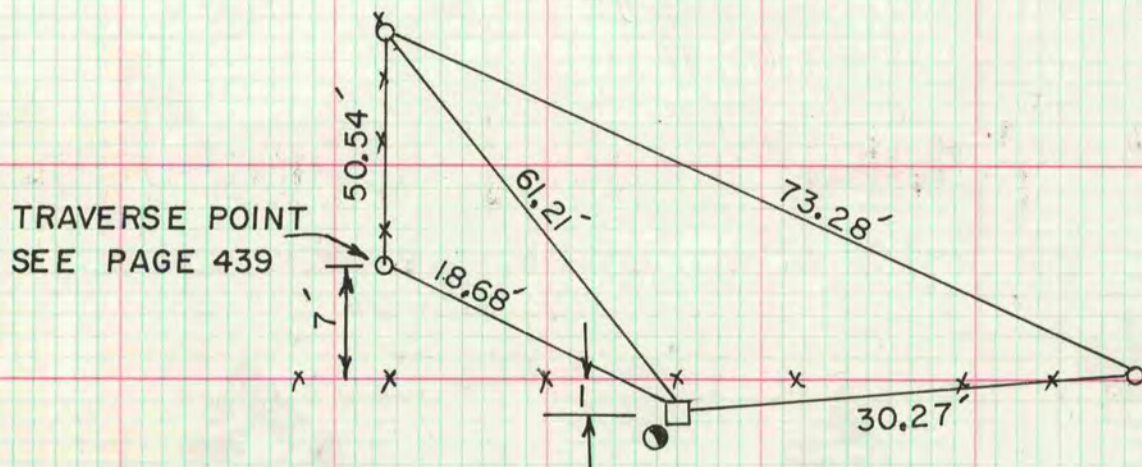
Rock County, Wisconsin, made JUNE 14 1978

I hereby certify that the following is a correct record of said survey as made by me.



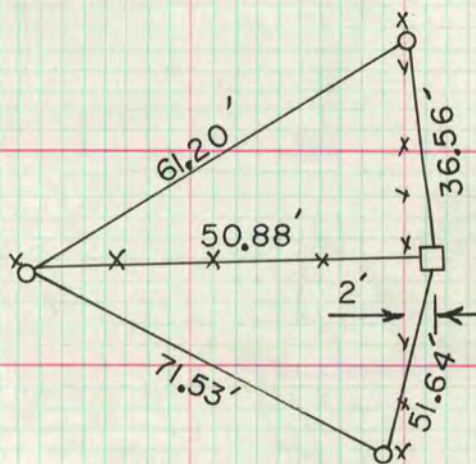
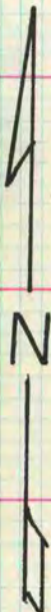
## N 1/4 COR SEC 36

FOUND CUT LIMESTONE AT GROUND LEVEL. PLACED 2" X 24" IP HORIZONTALLY ON EAST SIDE OF STONE



## NE COR SEC 36

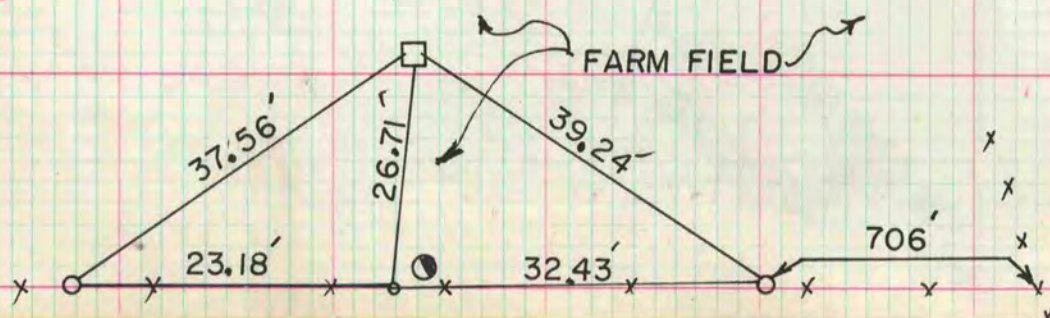
FOUND CUT LIMESTONE. TOP IS 0.3' ABOVE GROUND



o 1" X 24" IP  
● R/W POST

## W 1/4 COR SEC 36

FOUND CUT LIMESTONE 1' DEEP. PLACED 2" X 24" IP HORIZONTALLY 2.5' DEEP & ON NORTH SIDE OF THE STONE



MICROFILMED