

Of a Survey on Section 5 T. 23 N. R. 14 E. of the 4 P. M. in BRADFORD MAGNOLIA Township

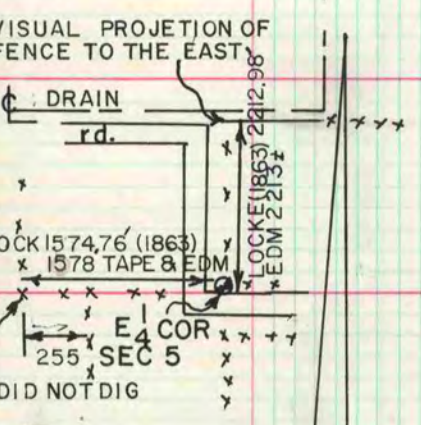
Rock County, Wisconsin, made AUGUST the 29 1977

I hereby certify that the following is a correct record of said survey as made by me.

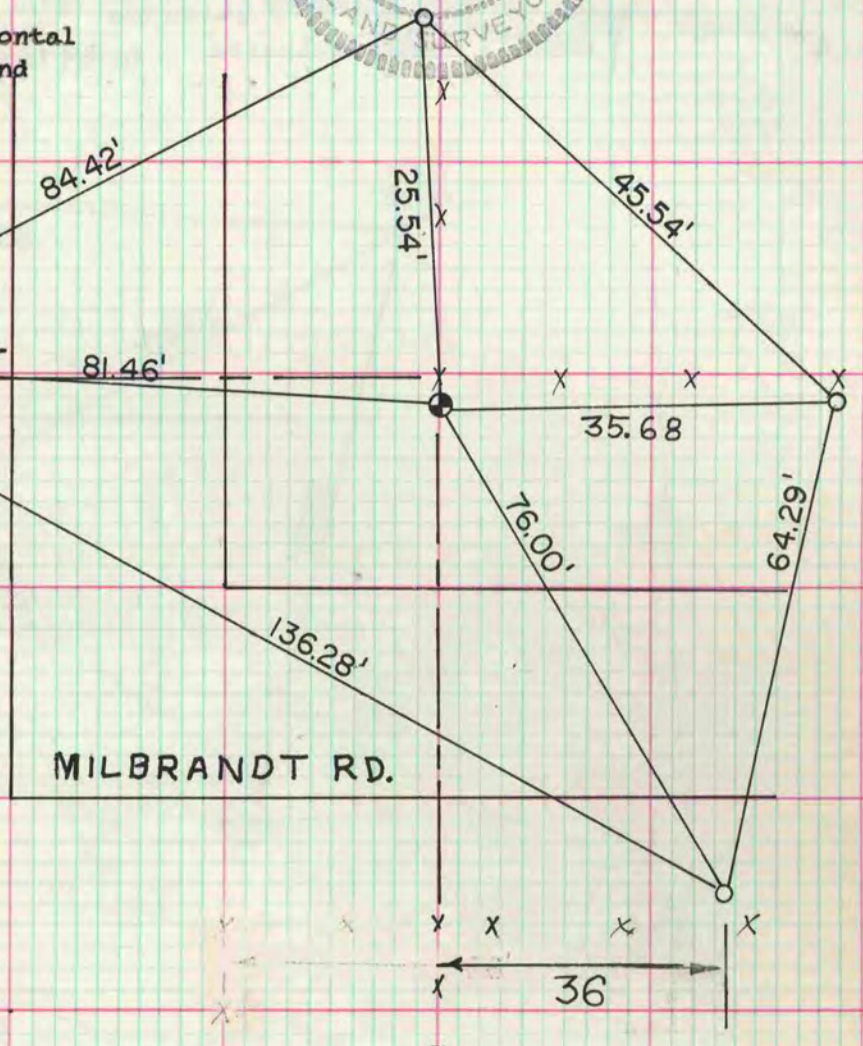
COUNTY BUILDING CITY OF JANESVILLE



E 1/4 cor sec 5-3-10
found 17 x 7 x 2 limestone in horizontal position, occupation to the west and north agreed with record distances. set alum mon

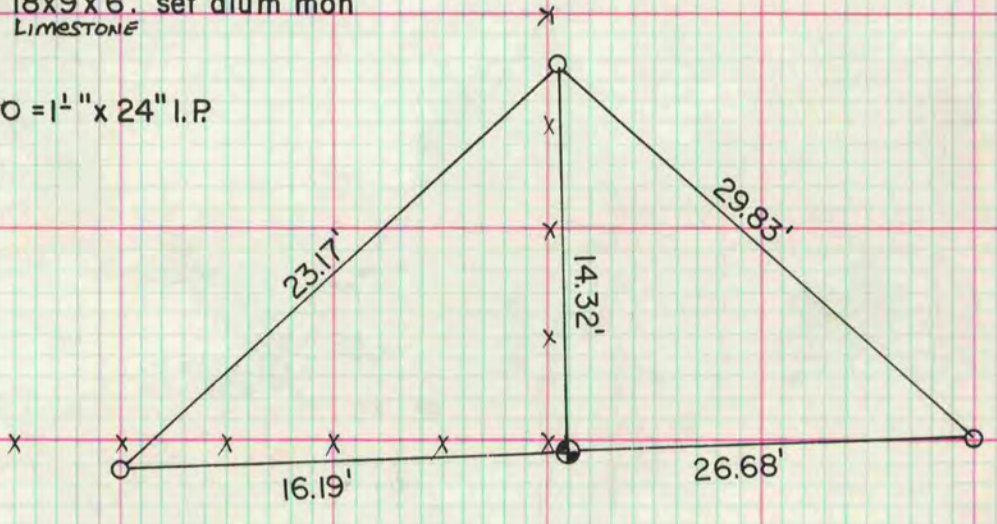


O = 1 1/4" x 24" I.P.



W 1/4 cor sec 23-2-14
fd limestone 15x10x5. stone of record 18x9x6. set alum mon
LIMESTONE

O = 1 1/2" x 24" I.P.



MICROFILMED