

PLAT AND RECORD

Of a Survey on Section 11 T 4 R 13 E. of the 4 P. M. in MILTON Township

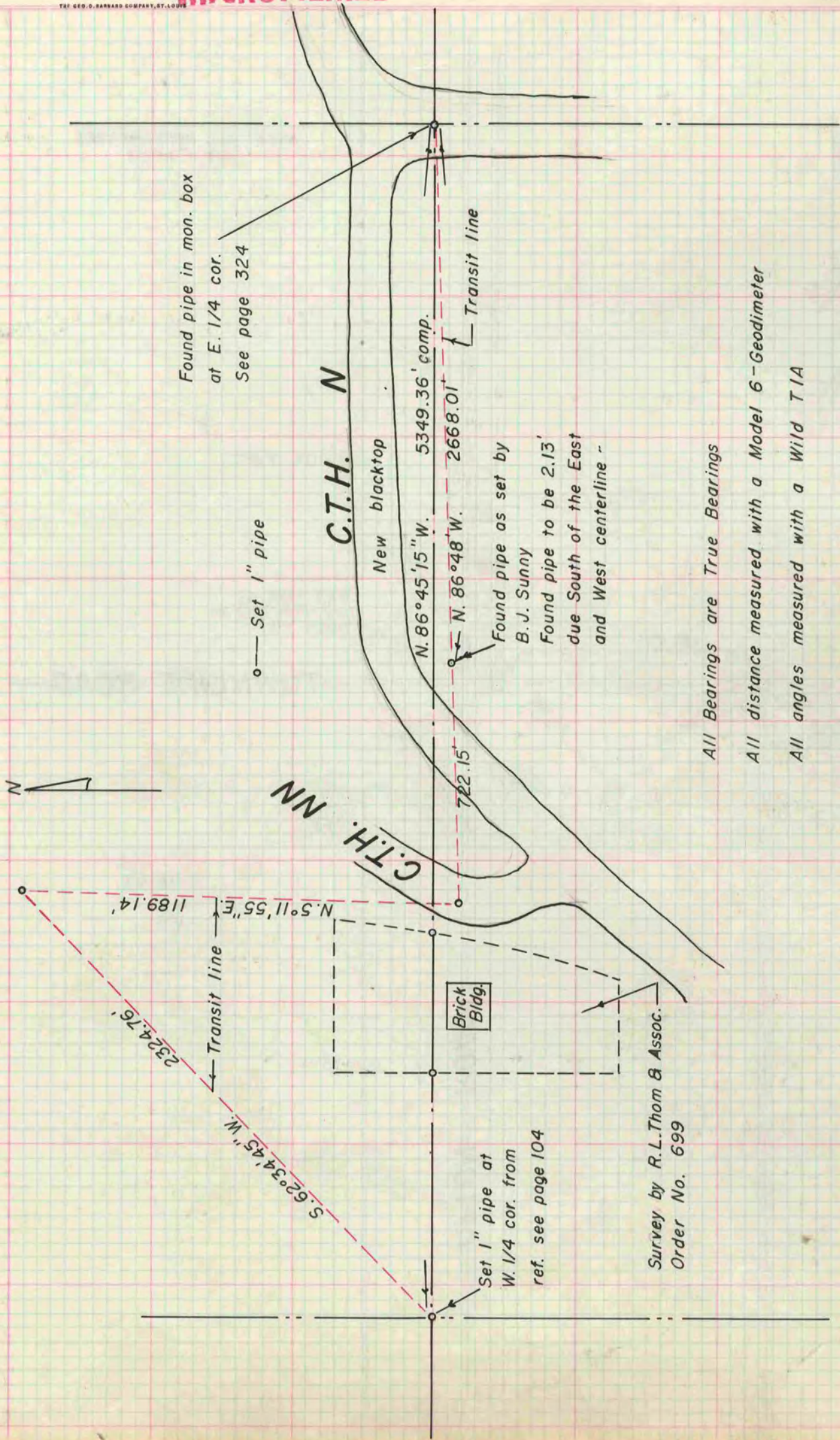
Rock County, Wisconsin, made JANUARY the 28th 1969

I hereby certify that the following is a correct record of said survey as made by me.

MICROFILMED

R.H. Batten

County Surveyor.



All Bearings are True Bearings
All distance measured with a Model 6-Geodimeter
All angles measured with a Wild T1A

Survey by R.L. Thom & Assoc.
Order No. 699