

PLAT AND RECORD

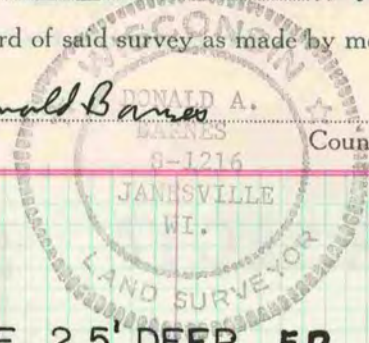
50a
VOL. 5

Of a Survey on Section **8** T **2** R **11** E. of the 4 P. M. in **PLYMOUTH** Township
 Rock County, Wisconsin, made **NOV** the **22** 19 **78**

I hereby certify that the following is a correct record of said survey as made by me.

COUNTY BUILDING
CITY OF JANESVILLE

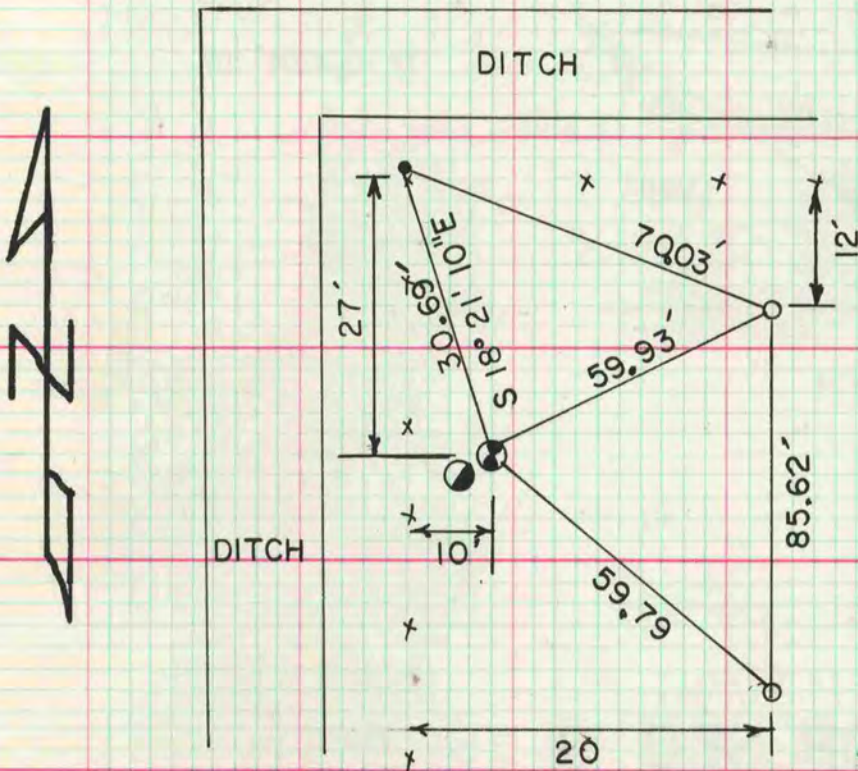
Donald Barnes



County Surveyor.

SW COR SEC 8

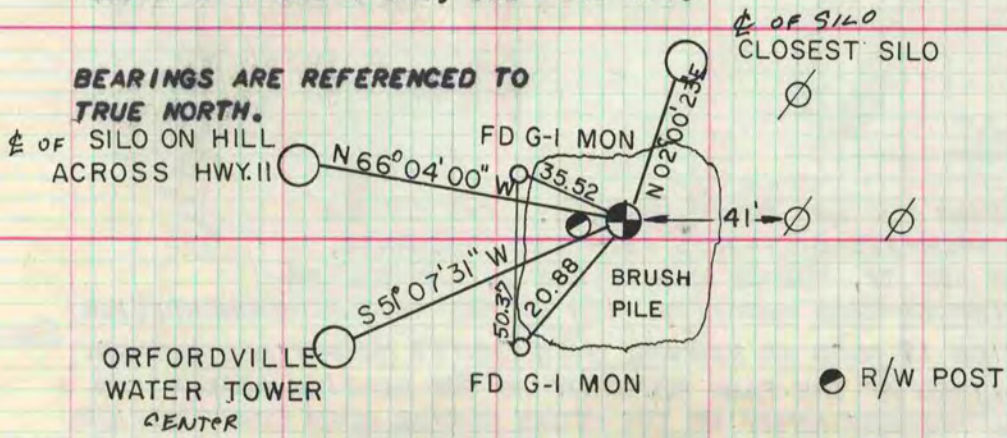
FD CUT LIMESTONE, TOP BROKEN OFF. 2.5' DEEP **FD**
 BOTTOM HALF LEANING AT A 45°. SET ALUM
 MON 1 1/2' DEEP & PLACED 2" X 24" IP HORIZONTALLY
 ON THE SOUTH SIDE OF THE MON.



- 1" X 24" IP DEEP
- R/W POST
- FD 1/2" RE ROD

1/4 COR SEC 8

THE CORNER WAS ESTABLISHED BY PRORATING LOCKE'S 1868 REMONUMENTATION DISTANCES FROM THE SW & SE CORNERS OF SEC 8 AND PRORATING RUGER'S 1873 DISTANCE FROM THE CENTER OF SECTION 17 AS ESTABLISHED BY PRORATING ALONG THE E/W CENTERLINE OF SECTION 17 FROM THE E 1/4 CORNER OF SECTION 17. SET ALUM MON. Alum mon is 1.51 EAST & 0.12' SOUTH OF FOUND STONE, SEE PAGE 480.



BEARINGS ARE REFERENCED TO TRUE NORTH.

1/2 OF SILO ON HILL ACROSS HWY. 11

ORFORDVILLE WATER TOWER CENTER

FD G-I MON

R/W POST

MICROFILMED