

MICROFILMED

PLAT AND RECORD

V-3 219

PG 210 BELoit REC
12/15/75 DAB

Of a Survey on Section 22 & 23 T 4N R 13 E. of the 4 P. M. in Milton Township

Rock County, Wisconsin, made October the 28th 1932

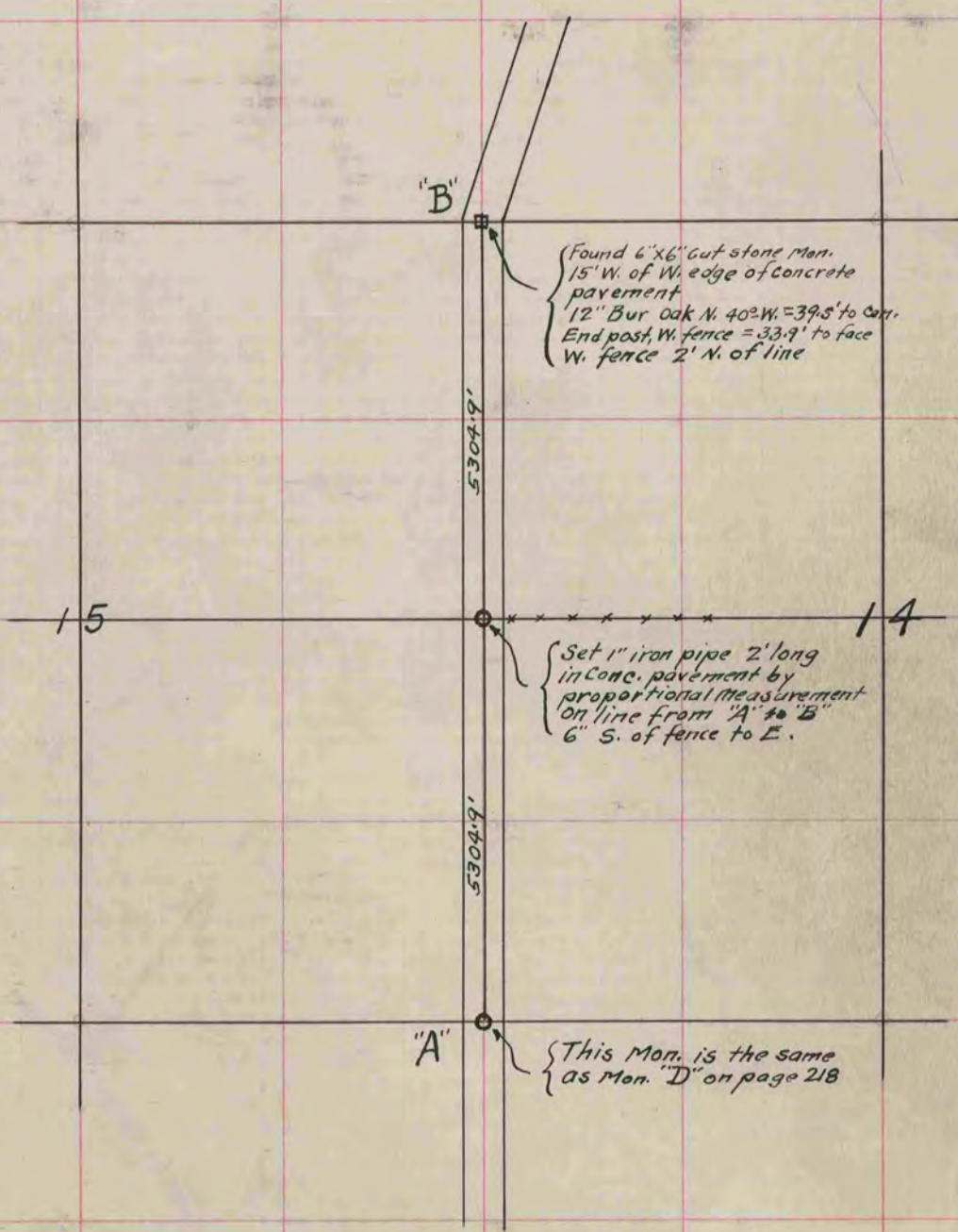
I hereby certify that the following is a correct record of said survey as made by me.

COUNTY BUILDING
CITY OF JANESVILLE

B. J. Bunn
County Surveyor.

NOTE:

These monuments were destroyed during the construction of Highway No. 26 and ordered replaced by the County Board of Supervisors.



"B"

{ Found 6"x6" cut stone Mon.
15' W. of W. edge of concrete
pavement
12" Bur Oak N. 40° W. = 39.5' to Cor.
End post, W. fence = 33.9' to face
W. fence 2' N. of line

5304.9'

15

14

{ Set 1" iron pipe 2' long
in conc. pavement by
proportional measurement
on line from "A" to "B"
6" S. of fence to E.

5304.9'

"A"

{ This Mon. is the same
as Mon. "D" on page 218