

PLAT AND RECORD

COUNTY BUILDING
CITY OF JANESVILLE

489

VOL. 5

Of a Survey on Section 21 T 2 R 11 E. of the 4 P. M. in PLYMOUTH Township
Rock County, Wisconsin, made NOV the 2 1978

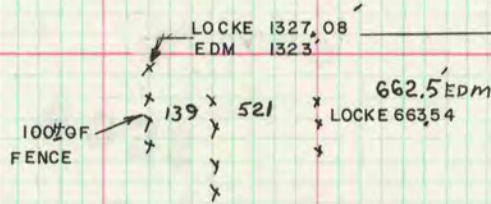
I hereby certify that the following is a correct record of said survey as made by me.



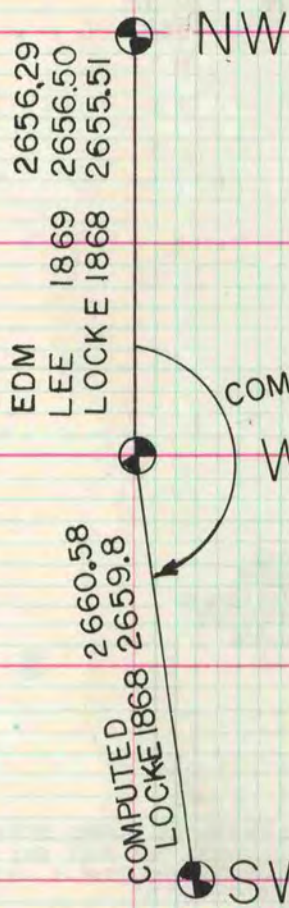
W1/4
SEC 20



5329 EDM
5322.22 LOCKE 1867

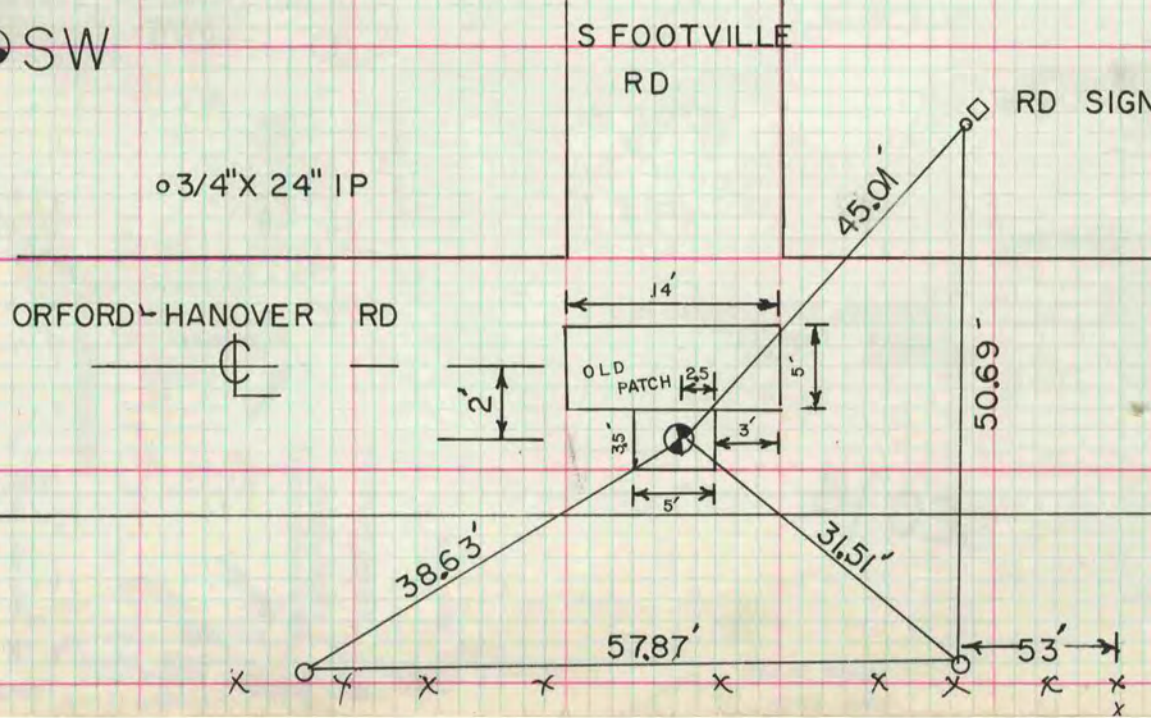


W1/4
SEC 21



W1/4 COR SEC 21

DUG 5' DEEP AND FOUND NOTHING. SET ALUM MON. AT SINGLE PROPORTIONATE DISTANCE FROM THE NW AND SW CORNER OF SEC 21, BUT NOT ON A STRAIGHT LINE. ESTABLISHED CORNER SO IT WAS IN HARMONY WITH OCCUPATION TO THE WEST. OCCUPATION WAS IN HARMONY WITH LOCKE'S CALL DISTANCES.



MICROFILMED