

PLAT AND RECORD

475

VOL. 5

COUNTY BUILDING
CITY OF JANESVILLE

Of a Survey on Section 5, 28 T 3 R 11 E. of the 4 P. M. in CENTER Township

Rock County, Wisconsin, made AUGUST the 30 19 78

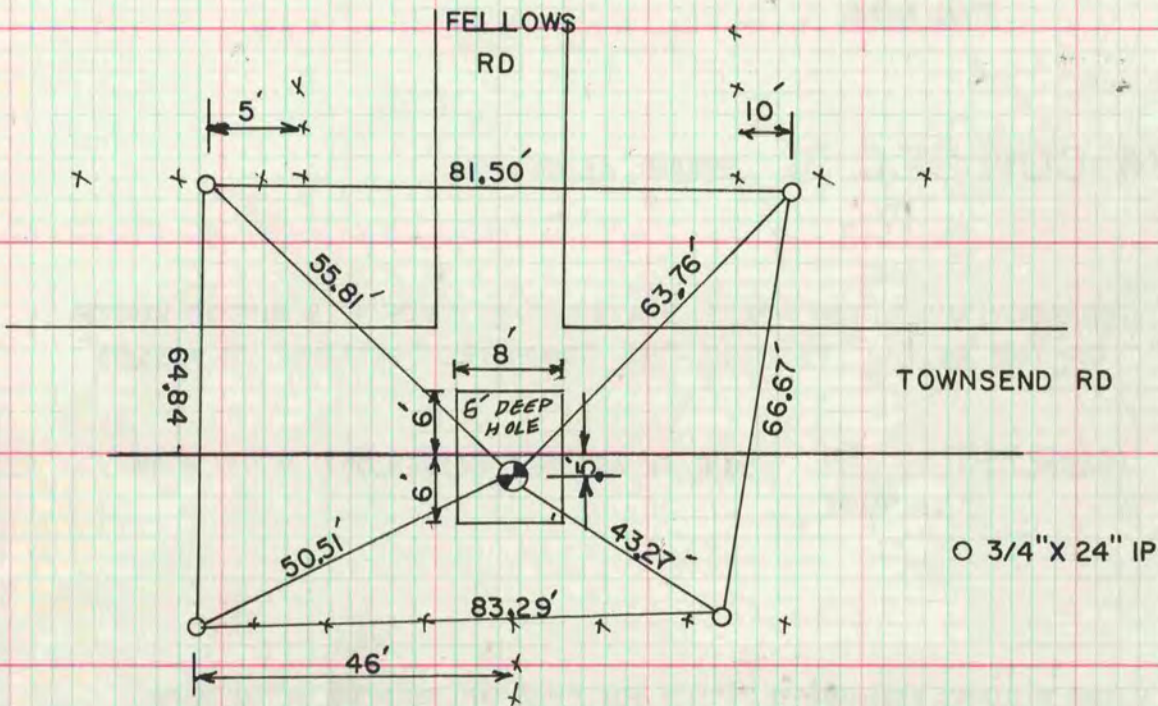
I hereby certify that the following is a correct record of said survey as made by me.



N1/4 COR SEC 28

DUG 6' DEEP & FOUND NOTHING, SET COR AT SINGLE PROPORTIONATE DISTANCE 8' ON LINE WITH THE NE & NW CORNER OF SECTION 28. DUG THE HOLE NORTH TO WHERE FORMER COUNTY SURVEYOR DUG.

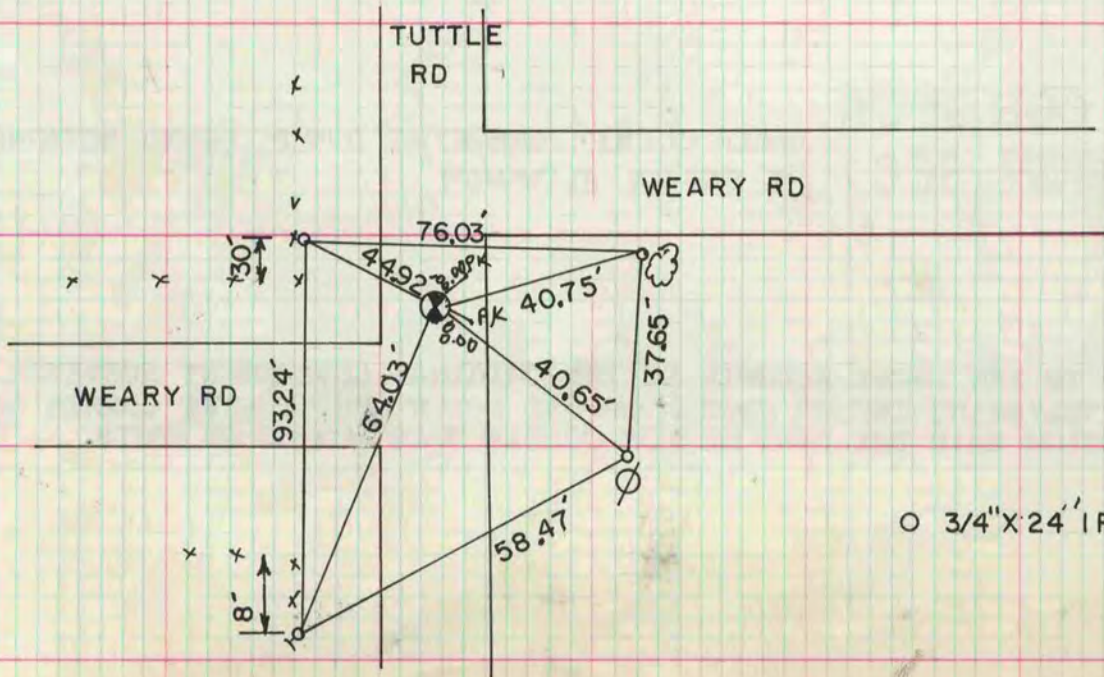
SET ALUM MON



S1/4 COR SEC. 5

DUG & FOUND STAKE 04HH

SET ALUM MON



MICROFILMED