

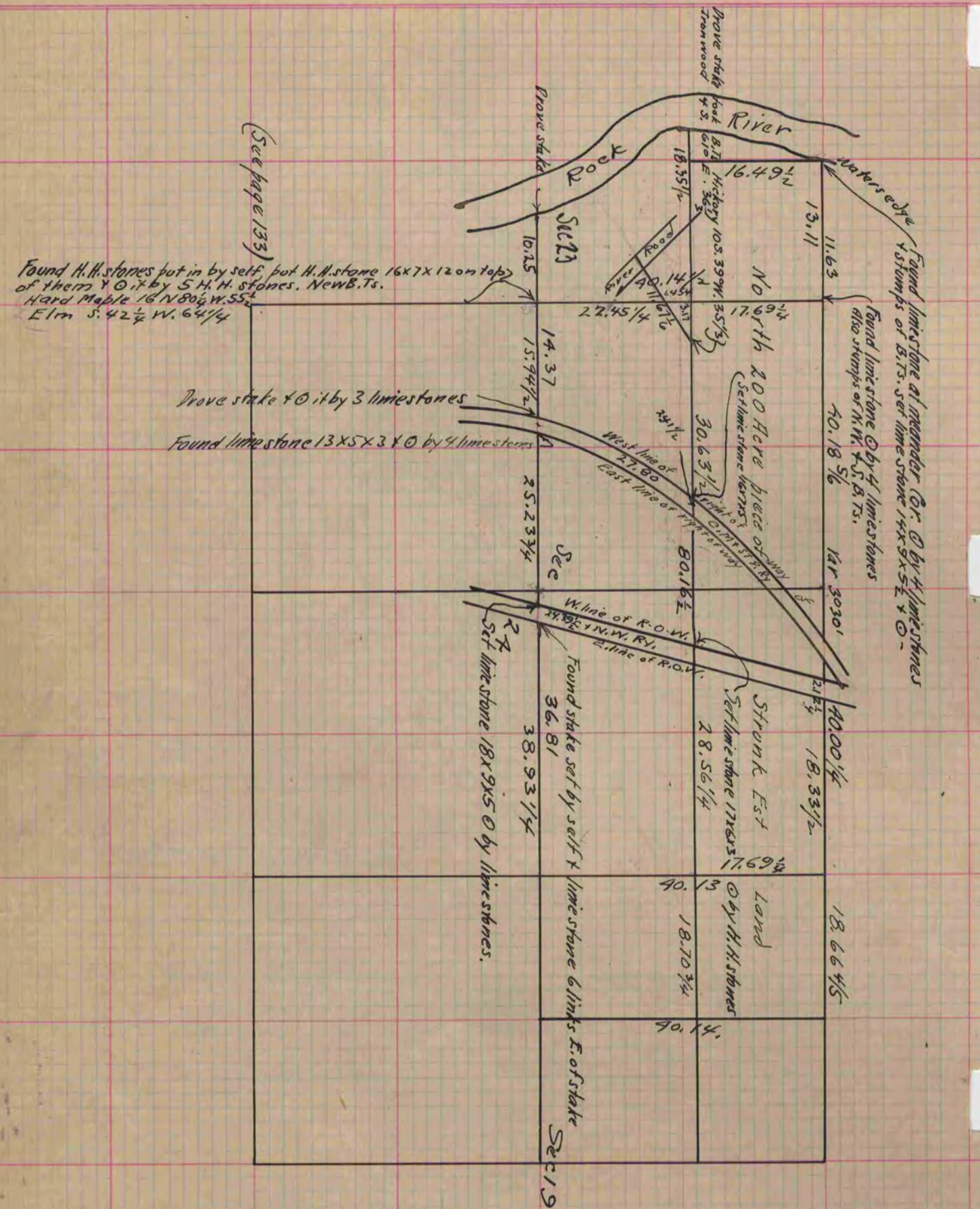
PLAT AND RECORD

Of a Survey on Sections 23×24 T 3 R 12 E. of the 4 P. M. in Janesville Township
 $\times 19$ 3 13 Harmony
Rock County, Wisconsin, made September 28 the 4 of November 1885

COUNTY BUILDING
CITY OF JANESVILLE

Whereby certify that the following is a correct record of said survey as made by me.

(Signed) Edward Roger
R.H.B. County Surveyor.



Copied from page 242 Vol. 2. County Surveyors Record.