

PLAT AND RECORD

Of a Survey on Section 2 T 4 N R 13 E. of the 4 P. M. in Milton Township
Rock County, Wisconsin, made June 23 1976

I hereby certify that the following is a correct record of said survey as made by me.

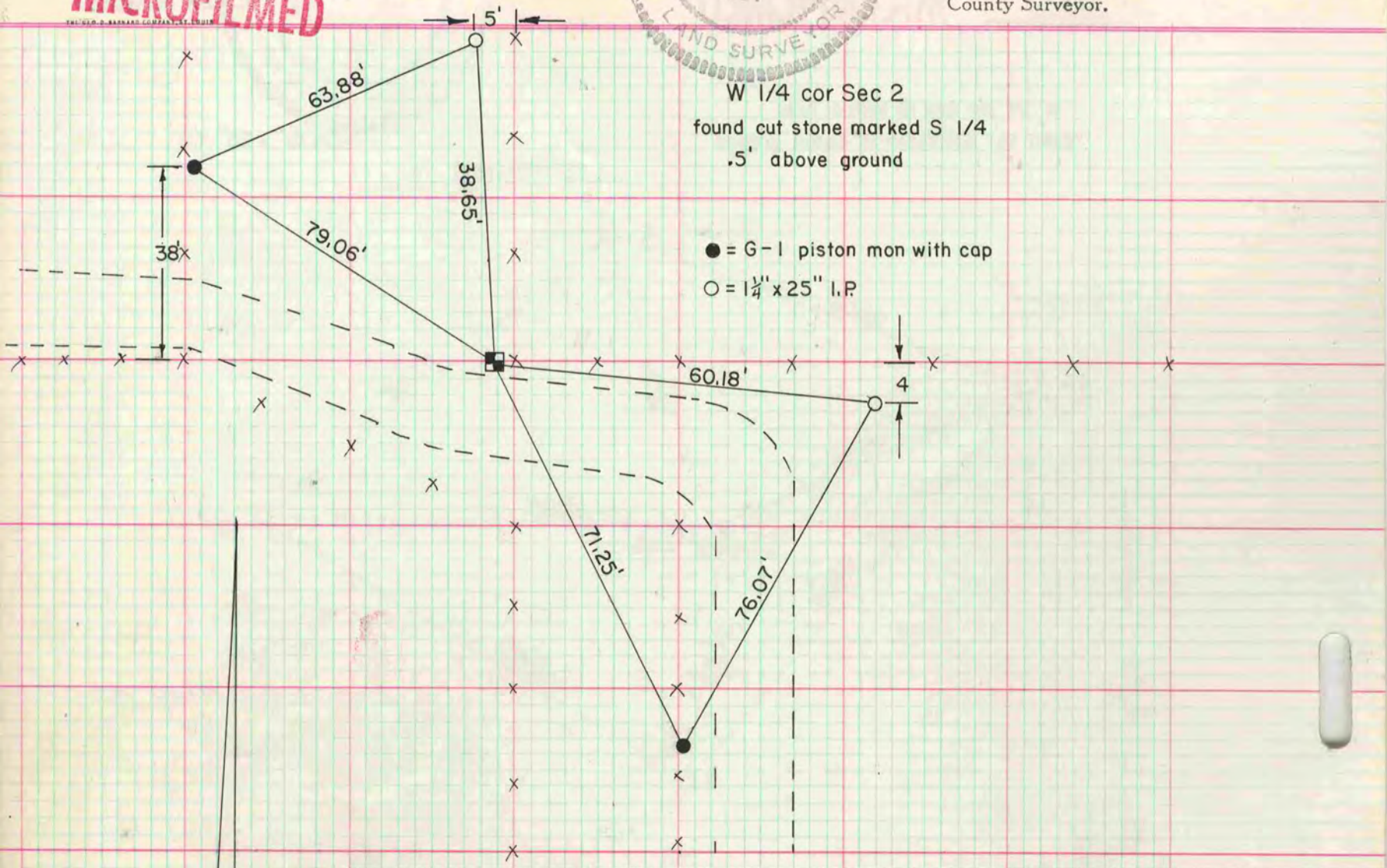
COUNTY BUILDING
CITY OF JANESVILLE



Donald Barnes

County Surveyor.

MICROFILMED



NW cor Sec 11
found cut stone mon with top broken off 1' deep
placed R/R spikes around the mon and on top of
mon put W-I-B Berntsen mon surrounded with
dirt mound, placed upright R/R tie to SW of mon

- = G-1 piston mon with capp
- = R/R tie

