

U.S. PUBLIC LAND SURVEY MONUMENT RECORD

For Public Land Survey Corners In:
T. 4N. R. 14E. 4th P.M.
CORNER CODE INDEX

WI ADMINISTRATIVE CODE A-E 7.08 REQUIREMENT
REV 10/23/2004 USMONREC.DWG

LIMA TWP

ROCK COUNTY WI

IF AVAILABLE
ROCK COUNTY COORDINATES PREFERRED

A	1	2	3	4	5	6	7	8	9	10	11	12	13	14	15	16	17	18	19	20	21	22	23	24	25	A
B																										B
C	6																									C
D																										D
E																										E
F																										F
G	7																									G
H																										H
J																										J
K																										K
L	18																									L
M																										M
N																										N
O																										O
P	19																									P
Q																										Q
R																										R
S																										S
T	30																									T
U																										U
V																										V
W																										W
X	31																									X
Y																										Y
Z																										Z

North _____ Elev. _____

East _____

Hor. Datum _____ Vert. Datum _____

LATITUDE _____ ELLIPS. HT. _____

LONGITUDE _____

NAD83(91) _____ NETWORK ADJ. YR _____

GPS (X) _____ TRAVERSE (X) _____

BASED ON THE FOLLOWING CONTROL:

PLACE MONUMENT SYMBOL AT PROPER LOCATION ON ABOVE INDEX

CORNER MONUMENT

WITNESS MONUMENT

BEARINGS ARE BASED ON: _____

FIELD BOOK _____ PAGE # _____

SHEET 1 OF 1

SHOW A PLAN VIEW DRAWING DEPICTING THE CORNER MONUMENT AND SURROUNDING PHYSICAL FEATURES, INCLUDING THE EXCAVATION AREA AND DEPTH.

PLANNING & ZONING COMMITTEE ADOPTED THIS FORM ON 12/2/1982

CORNER CODE N-25(1)

RECORD OF U. S. PUBLIC LAND SURVEY CONTROL STATION

U. S. PUBLIC LAND SURVEY CORNER: 13|18 T 4 N, R 14|15 E, ROCKWALWORTH COUNTY, WISCONSIN
24|19

HORIZONTAL CONTROL SURVEY BY: AYRES ASSOCIATES YEAR: 2004
 VERTICAL CONTROL SURVEY BY: AYRES ASSOCIATES YEAR: 2004

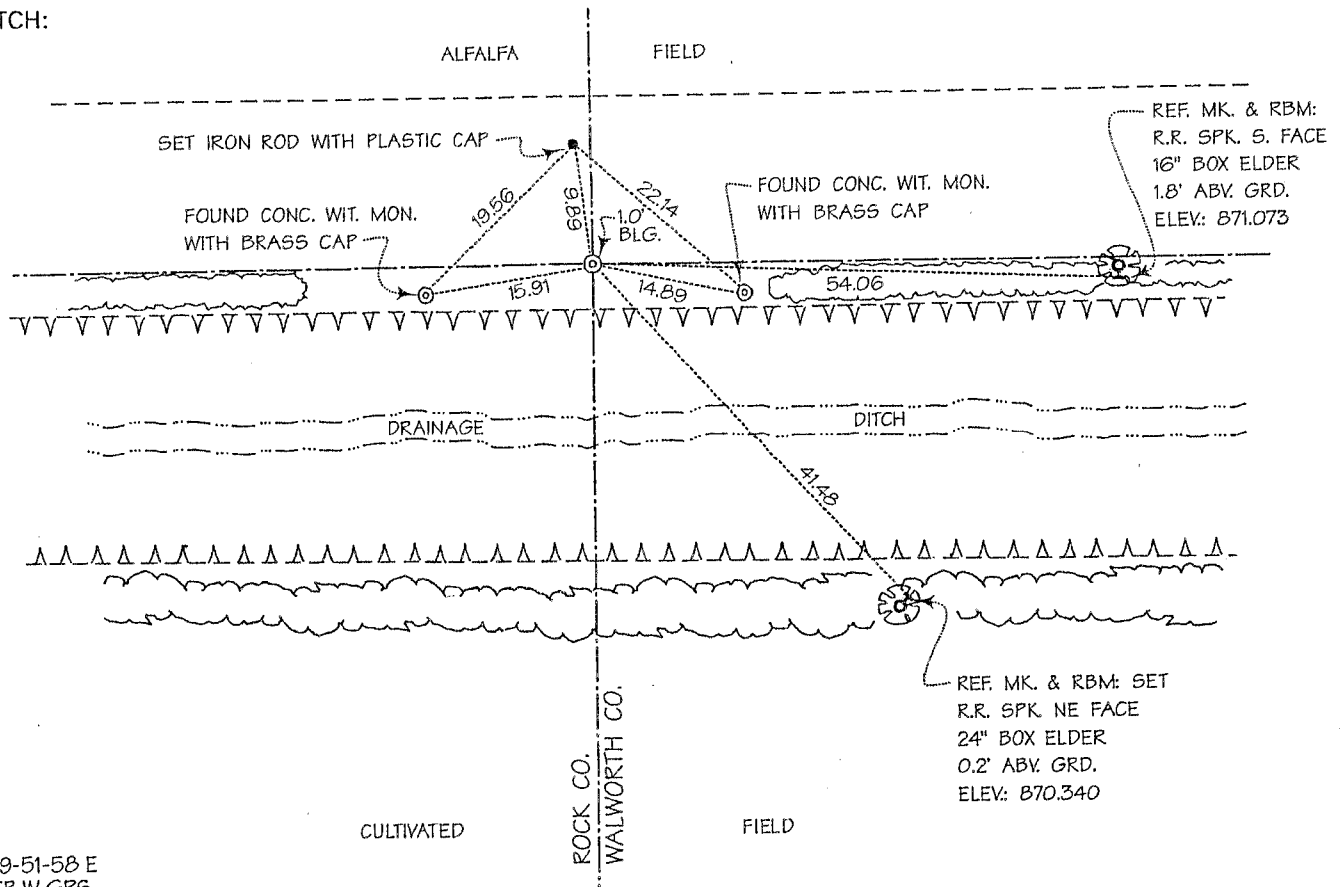
STATE PLANE COORDINATES OF: SECTION CORNER
 NORTH 293,347.10
 EAST 2,328,037.60

ELEVATION OF STATION: 870.201

HORIZONTAL DATUM: WISCONSIN STATE PLANE COORDINATE SYSTEM, SOUTH ZONE
 NORTH AMERICAN DATUM OF 1927

VERTICAL DATUM: NATIONAL GEODETIC VERTICAL DATUM OF 1929 THETA ANGLE: +0-50-23
 CONTROL ACCURACY:
 HORIZONTAL: THIRD ORDER, CLASS I VERTICAL: SECOND ORDER, CLASS II

LOCATION SKETCH:

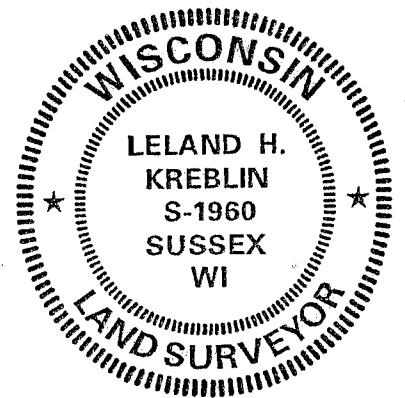


BEARING: N 09-51-58 E
 TO WHITEWATER W GPS

SURVEYOR'S AFFIDAVIT:

STATE OF WISCONSIN) SS
 WALWORTH COUNTY)

As Walworth County Surveyor, I hereby certify that I found a cast iron monument with cast iron cap as found and accepted as marking this corner in May 1988 by Lloyd L. Jensen, S-211, Walworth County Surveyor; said cast iron monument having been found and accepted as marking this corner in 1982 by Donald A. Barnes, S-1216, Rock County Surveyor; that I referenced the same as shown hereon; and that this record is correct and complete to the best of my knowledge and belief.



DATE OF SURVEY: 25 OCTOBER 2004 Leland H. Kremlin S - 1960
 REVISED: 3 JUNE 2005 REGISTERED LAND SURVEYOR