

U.S. PUBLIC LAND SURVEY MONUMENT RECORD

For Public Land Survey Corners In:

WI ADMINISTRATIVE CODE A-E 7.08 REQUIREMENT

T. 1 N. R. 10 E.

CORNER CODE INDEX

1	2	3	4	5	6	7	8	9	10	11	12	13	14	15	16	17	18	19	20	21	22	23	24	25	
A																									A
B																									B
C	6																								C
D																									D
E																									E
F																									F
G	7																								G
H																									H
J																									J
K																									K
L	18																								L
M																									M
N																									N
O																									O
P	19																								P
Q																									Q
R																									R
S																									S
T	30																								T
U																									U
V																									V
W																									W
X	31																								X
Y																									Y
Z																									Z
	1	2	3	4	5	6	7	8	9	10	11	12	13	14	15	16	17	18	19	20	21	22	23	24	25

AVON TWP

ROCK COUNTY WI

IF AVAILABLE
ROCK COUNTY COORDINATES PREFERRED

North _____ Elev. _____

East _____

Hor. Datum _____ Vert. Datum _____

LATITUDE _____ ELLIPS. HT. _____

LONGITUDE _____

GPS (X) _____ TRAVERSE (X) _____

BASED ON THE FOLLOWING CONTROL:

PLACE MONUMENT SYMBOL AT PROPER LOCATION ON ABOVE INDEX

CORNER MONUMENT

WITNESS MONUMENT

(a)

BEARINGS ARE BASED ON: _____

FIELD BOOK _____ PAGE # _____

SHEET 1 OF 2

SHOW A PLAN VIEW DRAWING DEPICTING THE CORNER MONUMENT AND SURROUNDING PHYSICAL FEATURES, INCLUDING THE EXCAVATION AREA AND DEPTH.

PLANNING & ZONING COMMITTEE ADOPTED THE ABOVE FORM ON 12/2/1982

CORNER CODE R-1 (1)

AV581

(B) Describe any record evidence, monument evidence, occupational evidence, testimonial evidence or any other material evidence you considered, and whether the monument was found or placed.

- 1833 HARRISON. SET POST FOR COR TO SECTIONS 24 & 25 (T1N R9) IN WEST EDGE OF BOTTOM. FROM WHICH A READ OAK 12" BEARS S19W 200.64' AND A BURR OAK 12" BEARS N26W 297'. CALLS FOR 5217.30 TO NE COR OF SEC 30.
- 1972 BIGKEL PLAT OF SURVEY CALLS FOR 5262.71 TO NE COR OF SEC 30 AND 2653.34 TO THE W 1/4 COR OF SEC 30 AND AN ANGLE OF 89-12-13 BETWEEN THOSE TWO CORNERS.
- 1972 LEE VOL 4 PG 555 AT SW COR SEC 19 SET C.I. MON & REFERENCED SAME.
- 1975 BATTERMAN 1268.24 TO N 1/16TH COR OF NW 1/4 OF SEC 30 , 5262.11 TO NE COR SEC 30, 2653.37 TO W 1/4 COR SEC 30, 2653.34 TO W 1/4 COR SEC 29, & ANGLE OF 89-12-14 FROM NE TO W 1/4 COR SEC 30
- 1978 TALARCZYK TOLD ME THAT HE FOUND A CAST IRON MONUMENT. A SECTION COR TIE SHEET IS ON FILE.
- 1991 BARNES R-1 FOUND CAST IRON MONUMENT WHICH IS 5265.77' TO THE NE CORNER AND 2648.90 TO THE W 1/4 COR OF SEC 30. THE ANGLE TO THOSE CORNERS IS 89-11-57. ACCEPTED FOUND PERPETUATED LOCATION. REFERENCED SAME.

FD 1991 TIES AND PK. ANGLE 89-11-56 FROM NE COR SEC 30 TO W 1/4 COR SEC 30, S89-23-18E 5262.82 TO NE COR SEC 30, & S0-13-10W 5318.55 TO W 1/4 COR SEC 30.

C) Was the corner restored through acceptance of (1) an obliterated evidence location, or, (2) a found perpetuated location?

ACCEPTED INTERSECTION DISTANCE FROM FOUND TIES.

D) Describe any material discrepancy between the location of the corner as restored or reestablished and the location of that corner as previously restored or reestablished by distance and direction. Show the discrepancy on the plan view drawing under (a), above. Show the distances between the corner as previously restored or reestablished and (1) the corner as restored or reestablished, and (2) to at least 4 of the witness monuments shown on the drawing in (a), above.

PK IS S48-41W 0.05' FROM INTERSECTION DISTANCES. DID NOT ATTEMPT TO UNCOVER C.I.

(E) Was the corner reestablished through lost corner proportionate methods? If so, show the method, including the directions and distances to other public land survey corners used as evidence or used for proportioning the corner location.

I, Donald Barnes, hereby certify that the corner location as identified by the corner code index was determined by me under my direction and control and that this U.S. Public Land Survey Monument Record is correct and complete to the best of my knowledge and belief.

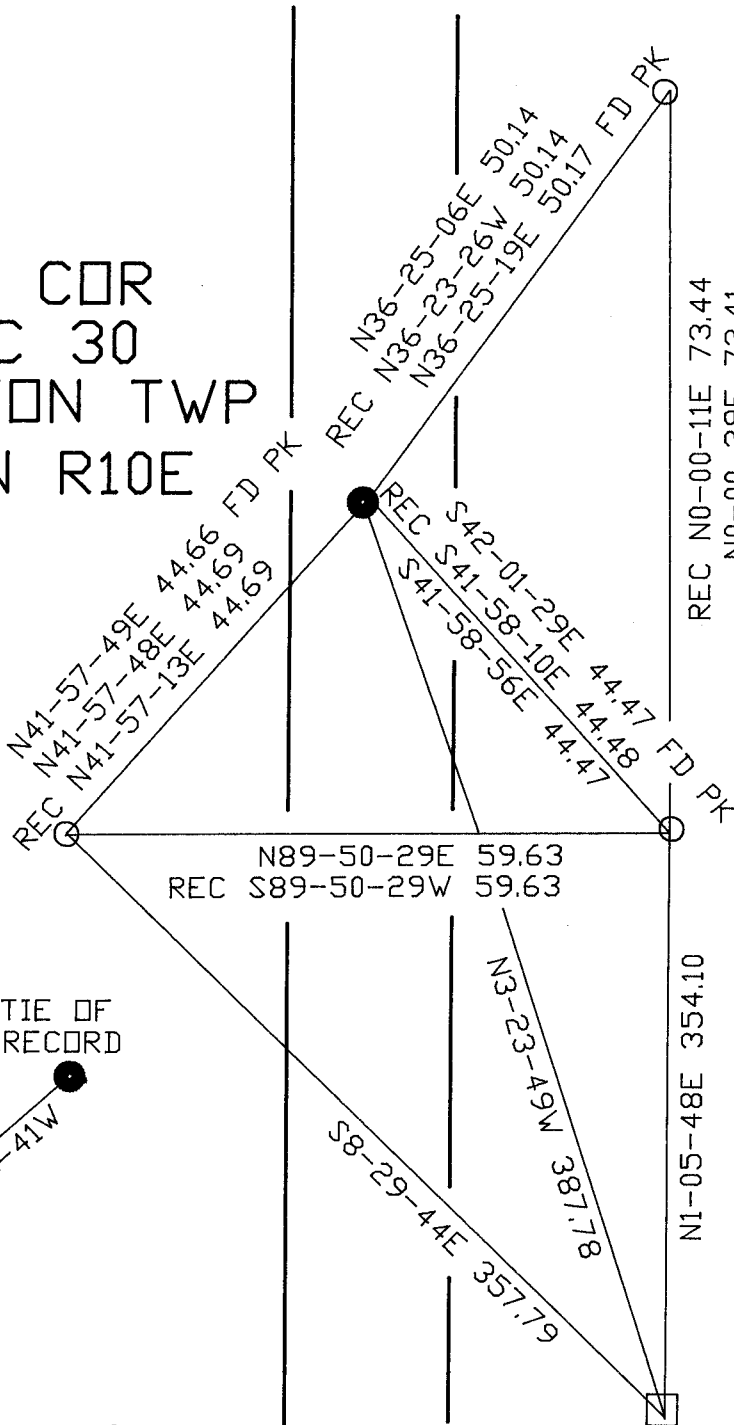
Seal

SHEET 1 OF 2

Emboss
Donald Barnes
12/30/01

CORNER CODE **R-1(1)**
A.E. 7.08 REQUIREMENT

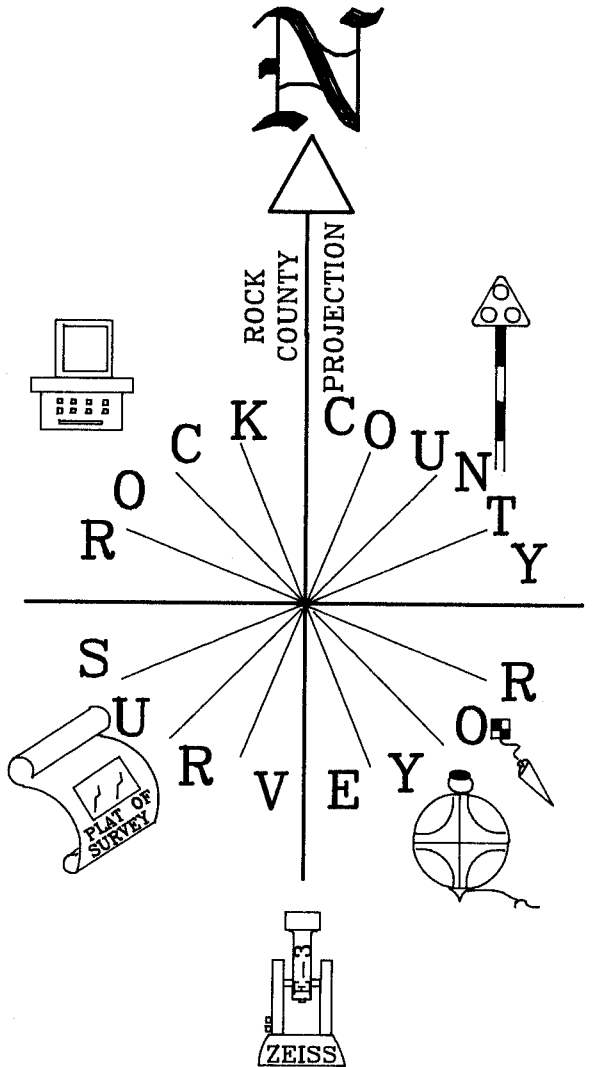
NW COR
 SEC 30
 AVON TWP
 T1N R10E



TIE OF RECORD
 0.05
 S48-41W
 FD PK

REC NO-00-11E 73.44
 NO-00-39E 73.41

NI-05-48E 354.10



NOT TO SCALE
 OBSERVATION SHEET #6868

- FD 3/4 REROD WITH CAP
- MON. OF REC. IS A C.I.

FD DOT DISK
 IN 16" CONC.
 MONUMENT

Donald Barnes CTH "T"
 EMBOSSED SEAL

12/30/01

R-1(1)