

U.S. PUBLIC LAND SURVEY MONUMENT RECORD

For Public Land Survey Corners in the

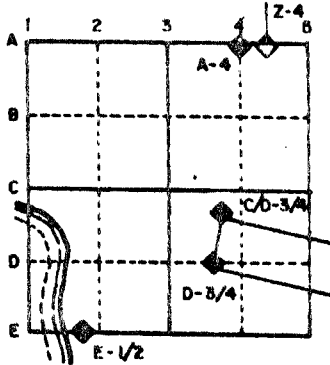
T. 4 N., R. 14 E.

CORNER CODE INDEX

	1	2	3	4	5	6	7	8	9	10	11	12	13	14	15	16	17	18	19	20	21	22	23	24	25
A																									
B	6																								
C		5																							
D			4																						
E				3																					
F					2																				
G																									
H	7																								
I		8																							
J			9																						
K				10																					
L					11																				
M						12																			
N							13																		
O								14																	
P									15																
Q										16															
R											17														
S												18													
T													19												
U														20											
V															21										
W																22									
X																	23								
Y																		24							
Z																			25						

PLACE MONUMENT SYMBOL (◆) AT PROPER LOCATION ON ABOVE INDEX

EXAMPLE



LIMA TWP
ROCK COUNTY WY

IF AVAILABLE STATE PLANE COORDINATES

North (Y) _____ Eleve. (Z) _____
 East (X) _____ Zone _____
 Hor. Datum _____ Vert. Datum _____

e.)

◆ CORNER MONUMENT

○ WITNESS MONUMENT

BEARINGS ARE BASED ON:

See Reverse Side

SHEET ___ OF ___

CORNER CODE: A19

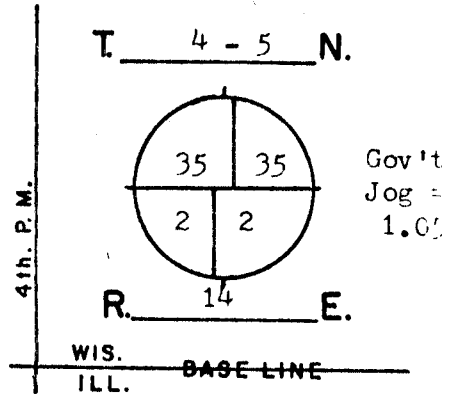
MAP#

GOVERNMENT LAND CORNER RECORD*

JEFFERSON COUNTY

TYPE OF MONUMENT Aluminum & Limestone
 STATE PLANE COORDINATES N.
E.
 ELEVATION M.S.L. DATUM: _____
 THETA ANGLE _____
 FIELD BOOK Koshkonong p. 47
 DRAWN BY TRW

CORNER NO. 47



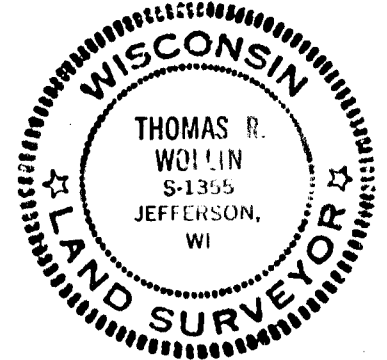
BASIS FOR MONUMENTATION

Original Survey, 1834-37, Wood Post & Bearing Trees Resurvey of Koshkonong Township, by Milo C. Jones, August-December, 1886. Field notes say that Bearing Tree evidence was found. From this evidence a Limestone monument, Approx. 6" by 36" long with a squared finished top, was set for the corner. Notes recorded in Register of Deeds, Miscellaneous Volume 1, pages 389-412.

1972, The stone was found, about even with ground surface on the East embankment of the road. A steel post & sign was set next to the stone.

1977, Rock Co. Surveyor, established the corner for N $\frac{1}{4}$ -2, 1.05' West of the corner stone to S $\frac{1}{4}$ -35. Corner was set equal distance between section corners of section 2. An Aluminum Monument was set for the corner.

SEAL:



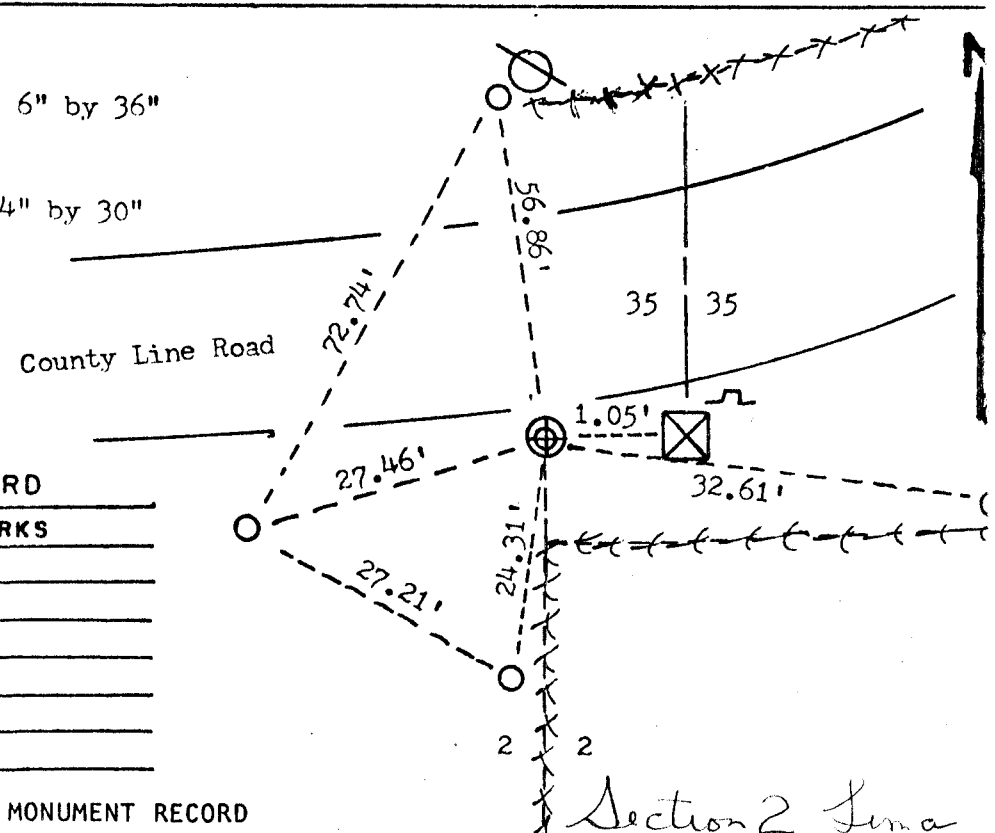
DATA SHOWN HERE ON CERTIFIED CORRECT:

Thomas R. Wollin
 REGISTERED LAND SURVEYOR
 DATED 5/12/1982

SECTION 2 LIMA
 MICROFILMED FILE B-1

LOCATION SKETCH

- SQUARE CUT LIMESTONE 6" by 36"
- CONCRETE / BRASS CAP
- ALUMINUM MAGNETIZED 4" by 30"
- IRON PIPE 1 $\frac{1}{2}$ " by 24"
- RR SPIKE
- PK NAIL
- *** FENCE
- UTILITY POLE
- STEEL POST / SIGN



MAINTENANCE RECORD

DATE	INIT.	REMARKS

* U.S. PUBLIC LAND SURVEY MONUMENT RECORD

Section 2 Lima