

Paper weight-110# (minimum)

Black nonfading ink required

U.S. PUBLIC LAND SURVEY MONUMENT RECORD

For Public Land Survey Corners In:
T. 1 N. R. 10 E. 4th P.M.
CORNER CODE INDEX

WI ADMINISTRATIVE CODE A-E 7.08 REQUIREMENT
REV 10/23/2004 USMONREC.DWG

A	1	2	3	4	5	6	7	8	9	10	11	12	13	14	15	16	17	18	19	20	21	22	23	24	25	A
B			6																							B
C				5																						C
D					4																					D
E						3																				E
F							2																			F
G								1																		G
H			7																							H
I				8																						I
J					9																					J
K						10																				K
L							11																			L
M								12																		M
N									13																	N
O										14																O
P											15															P
Q												16														Q
R													17													R
S														18												S
T															19											T
U																20										U
V																	21									V
W																		22								W
X																			23							X
Y																				24						Y
Z																					25					Z

Aven TWP
ROCK COUNTY WI

IF AVAILABLE
ROCK COUNTY COORDINATES PREFERRED

North _____ Elev. _____

East _____

Hor. Datum _____ Vert. Datum _____

LATITUDE _____ ELLIPS. HT. _____

LONGITUDE _____

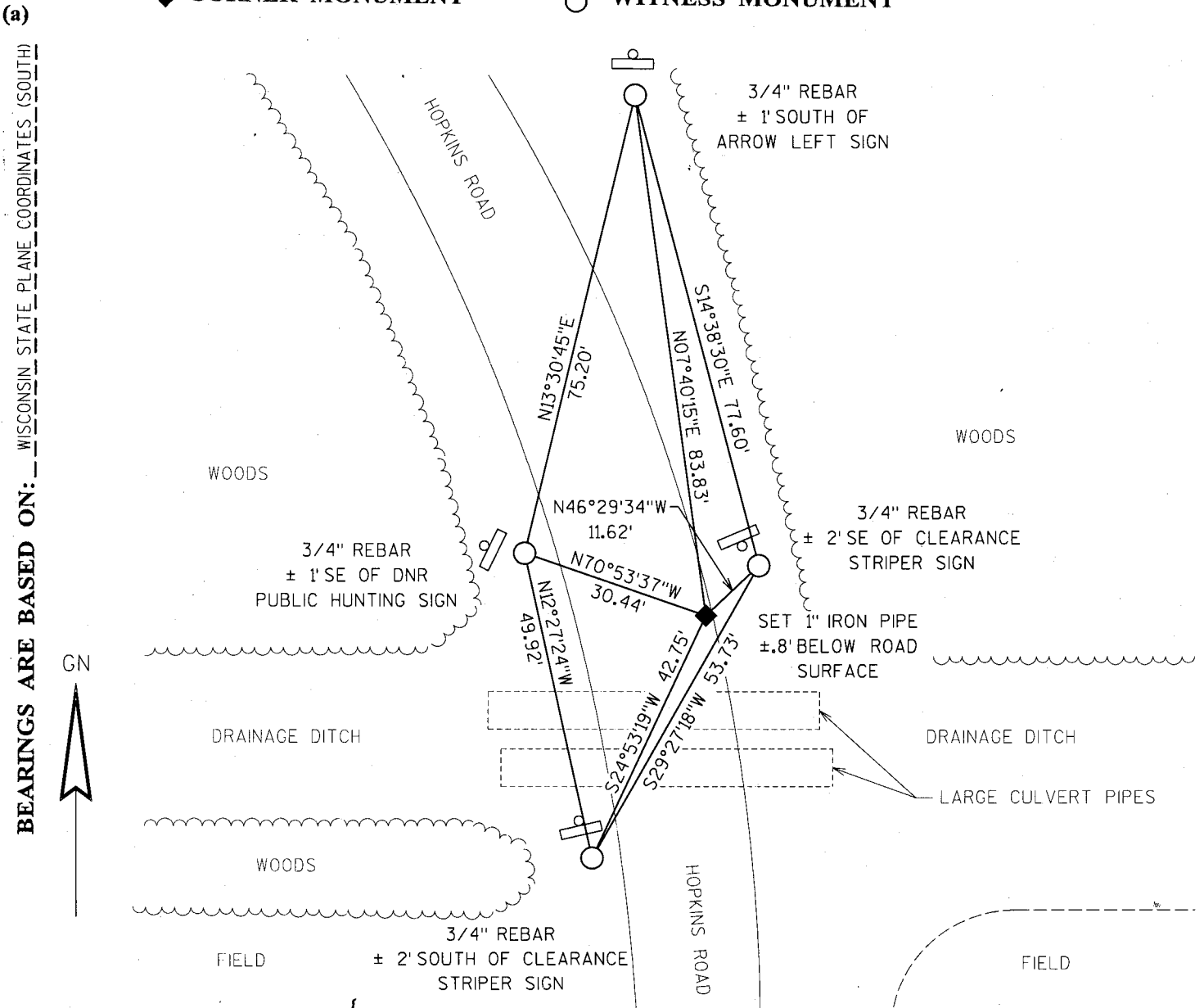
NAD83(91) _____ NETWORK ADJ. YR _____

GPS (X) _____ TRAVERSE (X) _____

BASED ON THE FOLLOWING CONTROL:

◆ CORNER MONUMENT

○ WITNESS MONUMENT



FIELD BOOK _____ PAGE # _____

SHEET 1 OF 2

SHOW A PLAN VIEW DRAWING DEPICTING THE CORNER MONUMENT AND SURROUNDING PHYSICAL FEATURES, INCLUDING THE EXCAVATION AREA AND DEPTH.

PLANNING & ZONING COMMITTEE ADOPTED THIS FORM ON 12/2/1982

CORNER CODE P-005(1)

(B) Describe any record evidence, monument evidence, occupational evidence, testimonial evidence or any other material evidence you considered, and whether the monument was found or placed.

DON BARNES, ROCK COUNTY SURVEYOR, FILED A TIE SHEET DATED 4-30-2003 ON THIS CORNER SHOWING A COMPUTED COORDINATE FOR THIS CORNER LOCATION. THE CORNER WAS SEARCHED FOR AND WAS BELIEVED TO HAVE BEEN REMOVED DURING ROAD CONSTRUCTION. I ALSO RETRACED A MAP OF SURVEY BY ROBERT BICKEL S-1126 DATED 4-30-1978 WHICH TIED INTO SEVERAL SECTION CORNERS IN THE AREA. ON THIS MAP OF SURVEY BICKEL SHOWS A FOUND MONUMENT AT THIS LOCATION. BICKEL'S LOCATION AGREED WITH THE LOCATION OF DON BARNES COORDINATE VALUE. I ACCEPTED THIS POSITION AS THE TRUE CORNER LOCATION AND MONUMENTED IT WITH A 1" IRON PIPE AND WITNESSED IT AS SHOWN ON THE FRONT OF THIS DOCUMENT.

C) Was the corner restored through acceptance of (1) an obliterated evidence location, or, (2) a found perpetuated location?

OBLITERATED EVIDENCE LOCATION

D) Describe any material discrepancy between the location of the corner as restored or reestablished and the location of that corner as previously restored or reestablished by distance and direction. Show the discrepancy on the plan view drawing under (a), above. Show the distances between the corner as previously restored or reestablished and (1) the corner as restored or reestablished, and (2) to at least 4 of the witness monuments shown on the drawing in (a), above.

NONE

(E) Was the corner reestablished through lost corner proportionate methods? If so, show the method, including the directions and distances to other public land survey corners used as evidence or used for proportioning the corner location.

NO

I, JASON L. CANCE, hereby certify that the corner location as identified by the corner code index was determined by me under my direction and control and that this U.S. Public Land Survey Monument Record is correct and complete to the best of my knowledge and belief.



SHEET 2 OF 2

CORNER CODE

A.E. 7.08 REQUIREMENT

P-005