

# U.S. PUBLIC LAND SURVEY MONUMENT RECORD

For Public Land Survey Corners in:

WI ADMINISTRATIVE CODE A-E 7.08 REQUIREMENT

T. 1N., R. 10E

### CORNER CODE INDEX

A	1	2	3	4	5	6	7	8	9	10	11	12	13	14	15	16	17	18	19	20	21	22	23	24	25
B																									
C	6																								
D																									
E																									
F																									
G	1																								
H																									
J																									
K	18																								
L																									
M																									
N																									
O																									
P	19																								
Q																									
R																									
S																									
T	30																								
U																									
V																									
W																									
X	31																								
Y																									
Z																									

AVON TWP  
ROCK COUNTY WI

IF AVAILABLE  
ROCK COUNTY COORDINATES PREFERRED

North \_\_\_\_\_ Elev. \_\_\_\_\_

East \_\_\_\_\_

Hor. Datum \_\_\_\_\_ Vert. Datum \_\_\_\_\_

LATITUDE \_\_\_\_\_ ELLIPS. HT. \_\_\_\_\_

LONGITUDE \_\_\_\_\_

GPS (X) \_\_\_\_\_ TRAVERSE (X) \_\_\_\_\_

BASED ON THE FOLLOWING CONTROL:

PLACE MONUMENT SYMBOL  AT PROPER LOCATION ON ABOVE INDEX

CORNER MONUMENT

WITNESS MONUMENT

(a)

BEARINGS ARE BASED ON:

FIELD BOOK \_\_\_\_\_ PAGE # \_\_\_\_\_

SHEET 1 OF 2

SHOW A PLAN VIEW DRAWING DEPICTING THE CORNER MONUMENT AND SURROUNDING PHYSICAL FEATURES, INCLUDING THE EXCAVATION AREA AND DEPTH.

PLANNING & ZONING COMMITTEE ADOPTED THE ABOVE FORM ON 12/2/1982

CORNER CODE A23(1)

AV512

(B) Describe any record evidence, monument evidence, occupational evidence, testimonial evidence or any other material evidence you considered, and whether the monument was found or placed.

1800s ORIGINAL SURVEYOR DID NOT ESTABLISH CORNER.

1848 AVON TOWN ROAD RECORDS BOOK 1 PG 8. "'''" THENCE EAST ON THE TOWN LINE TO THE NORTH EAST CORNER OF SEC 4: THENCE EAST ON THE TOWN LINE TO THE NORTH EAST CORNER OF TOWN 1 RANGE 10. AND WE ORDER AND DETERMINE THAT THE ABOVE DESCRIBED LINE BE THE CENTER LINE OF A PUBLIC HIGHWAY OF 4 ROADS IN WIDTH AS FAR AS THE NORTH LINE OF THE TOWN AT A POINT 17 CHAINS FROM THE NORTH WEST CORNER OF SECTION 4 AND WE FURTHER ORDER THAT THE NORTH LINE OF SAID TOWN BE THE CENTRE LINE OF A HIGHWAY OF WHICH TWO ROADS IN WIDTH IS TO BE TAKEN FROM THE SAID TOWN OF AVON COMMENCING 11 CHAINS AND 4 LINKS WEST FROM THE NORTH EAST CORNER OF SECTION 4: THENCE RUNNING EAST TO THE NORTH EAST CORNER OF TOWN 1 RANGE 10."

1957 BATTERMAN JR. VOL 3 PG 523 ESTABLISHED TIES FOR CORNER BUT STATES NOTHING ABOUT THE CORNER. NOTE "COR AS SET BY RHB SR JUNE 9-13 1953"

19?? BATTERMAN 2663.18 FROM NW TO N 1/4 CORNERS OF SEC 1.

1993 BARNES A-23. DID NOT FIND OLD PATCH NOR REFERENCE PIPES FOR N 1/4 COR SEC 1 AVON TWP. FOUND NAIL IN UTILITY POLE. PLACED REFERENCE MONUMENTS.

FOUND BATTERMAN'S SW AND SE REFERENCE PIPES AS SHOWN ON MAP.

C) Was the corner restored through acceptance of (1) an obliterated evidence location, or, (2) a found perpetuated location?

RESTORED CORNER BY INTERSECTING BATTERMAN'S RECORD TIE DISTANCES WHICH WERE IN HARMONY WITH RECORD DISTANCES TO THE NE AND NW CORNERS OF SEC 1. THIS IS IN THE CENTER OF THE PAVEMENT.

D) Describe any material discrepancy between the location of the corner as restored or reestablished and the location of that corner as previously restored or reestablished by distance and direction. Show the discrepancy on the plan view drawing under (a), above. Show the distances between the corner as previously restored or reestablished and (1) the corner as restored or reestablished, and (2) to at least 4 of the witness monuments shown on the drawing in (a), above.

(E) Was the corner reestablished through lost corner proportionate methods? If so, show the method, including the directions and distances to other public land survey corners used as evidence or used for proportioning the corner location.

I, Donald Barnes, hereby certify that the corner location as identified by the corner code index was determined by me under by direction and control and that this U.S. Public Land Survey Monument Record is correct and complete to the best of my knowledge and belief.

*Donald Barnes*  
Sep 10, 1996  
emboss

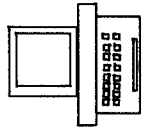
Number of included sheets \_\_\_\_\_

CORNER CODE

A-E 7.08 REQUIREMENT

A23(1)

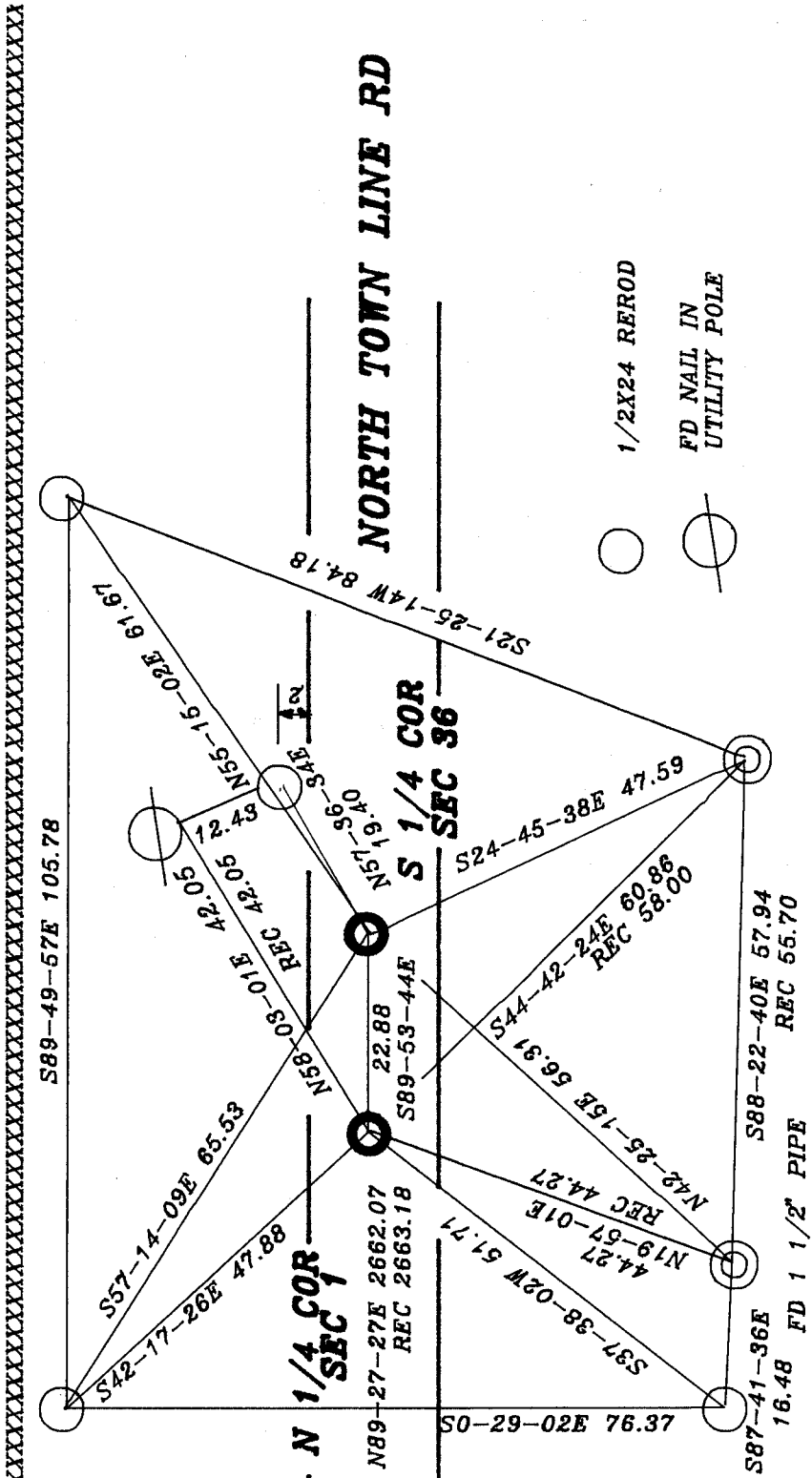
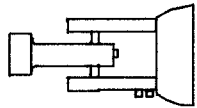
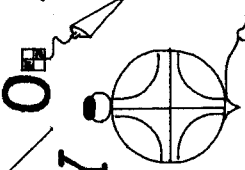
Donald Bane,  
Sept 10, 1996



ASSUMED

C  
K  
C  
O  
U  
N  
T  
Y

S  
U  
R  
V  
E  
Y  
O  
R



FD 1 1/2" PIPE LAYING 3/4  
OF ITS' LENGTH ON TOP OF  
GROUND. REPLACED WITH 3/4  
X 24 REROD

A-23(1)