

U.S. PUBLIC LAND SURVEY MONUMENT RECORD

For Public Land Survey Corners In:

WI ADMINISTRATIVE CODE A-E 7.08 REQUIREMENT

T. 1 N. R. 10 E.

CORNER CODE INDEX

1	2	3	4	5	6	7	8	9	10	11	12	13	14	15	16	17	18	19	20	21	22	23	24	25	
A																									A
B																									B
C																									C
D																									D
E																									E
F																									F
G																									G
H																									H
J																									J
K																									K
L																									L
M																									M
N																									N
O																									O
P																									P
Q																									Q
R																									R
S																									S
T																									T
U																									U
V																									V
W																									W
X																									X
Y																									Y
Z																									Z

Avon TWP

ROCK COUNTY WI

IF AVAILABLE
ROCK COUNTY COORDINATES PREFERRED

North 221,270.66 Elev. _____

East 400,712.88

Hor. Datum NAD 83(91) Vert. Datum _____

LATITUDE _____ ELLIPS. HT. _____

LONGITUDE _____

GPS (X) _____ TRAVERSE (X) _____

BASED ON THE FOLLOWING CONTROL:

PLACE MONUMENT SYMBOL AT PROPER LOCATION ON ABOVE INDEX

CORNER MONUMENT

WITNESS MONUMENT

BEARINGS ARE BASED ON:

FIELD BOOK _____ PAGE # _____

SHEET 1 OF 4

SHOW A PLAN VIEW DRAWING DEPICTING THE CORNER MONUMENT AND SURROUNDING PHYSICAL FEATURES, INCLUDING THE EXCAVATION AREA AND DEPTH.

PLANNING & ZONING COMMITTEE ADOPTED THE ABOVE FORM ON 12/2/1982

CORNER CODE L-1 (2)

AV554

(B) Describe any record evidence, monument evidence, occupational evidence, testimonial evidence or any other material evidence you considered, and whether the monument was found or placed.

- 1833 HARRISON NORTH ON E. SIDE OF SEC 13-4TH MILE
(VAR BE ON EAST LINE OF SEC 36 T1N R9E)
2211' INT. SUGAR CREEK CRS E AND SET A POST FOR
MEANDERING CORNER FROM WHICH A RED OAK 18
INCHES IN DIAM BEARS S66E 206.58' DIST.
- 1833 MULLETT VAR 7-55 NORTH ON EAST SIDE SECTION 36 T1N
R9E 4TH P.M.
VARIATION B EAST BEGUN AT POST ON RIGHT BANK OF SUGAR
CREEK, EAST SIDE OF SECTION 13.
NORTH ON EAST SIDE OF SECTION 13, WHICH IS
2,211' FROM CORNER TO SECTIONS 13X24
2393.82 SET POST ON LEFT BANK SUGAR CREEK W. ASH 6
S23E DIST 55.44' BURR OAK 14 N48W 237.6'
2640 SET 1/4 SECTION POST BUR OAK 16 NB 1/2 W 63.36'
NO OTHER
3052.5' BUR OAK 12
4620' ENTER PRAIRIE
5280' SET OAK POST FOR CORNER TO SECTIONS 12 & 13.
RAISED A MOUND. LAND LEVEL, 2ND RATE. FIRST
PART THINLY TIMBERED WITH BUR OAK.
- 1852 McVEAN MAP #66 SUBDIVIDED SEC 18. DID NOT CALL FOR
W 1/4 COR SEC 18
- 1856 AVON TWP RD RECORDS BK 1 PG 28 COMMENCING ON THE
COUNTY LINE AT THE CENTER OF THE WEST LINE OF SECTION
NO. 30 IN SAID TOWN OF AVON THENCE RUNNING NORTH ON
SAID COUNTY LINE TO INTERSECT THE COUNTY LINE ROAD
ON THE WEST LINE OF SECTION 7 AND THAT THE SAID LINE
ABOVE DESCRIBED BE THE CENTER LINE OF SAID HIGHWAY
AND THAT THE SAID HIGHWAY BE OF THE WIDTH OF FOUR
RODS AND IT IS FURTHER ORDERED THAT THE SAID HIGHWAY
BE DIVIDED INTO TWO ROAD DISTRICTS AS FOLLOWS: THAT
PART THEREOF FROM SUGAR RIVER SOUTH SHALL BE ONE
OF SAID ROAD DISTRICTS AND SHALL BE ALLOTTED TO THE
TOWN OF AVON AND THE REMAINDER OF SAID HIGHWAY
SHALL BE THE OTHER OF SAID ROAD DISTRICT AND SHALL
BE ALLOTTED TO THE TOWN OF SPRING GROVE.
- 1864 AVON TWP RD RECORDS BK 1 PG 37 & 38 "IT IS ORDERED
AND DETERMINED THAT A HIGHWAY BE AND THE SAME IS
HEREBY LAID OUT PURSUANT TO SAID APPLICATION WHICH
IS AS FOLLOWS TO WIT. COMMENCING ON THE COUNTY LINE
BETWEEN THE COUNTIES OF ROCK AND GREEN AT THE SOUTH
WEST CORNER OF THE NORTH WEST QUARTER OF SECTION 30
IN TOWNSHIP NUMBER ONE NORTH OF RANGE 10 IT BEING
ALSO THE SOUTH EAST CORNER OF THE NORTH EAST
QUARTER OF SECTION 25 TOWN ONE RANGE 9 EAST; THENCE
NORTH ON SAID COUNTY LINE TO TH NORTH WEST CORNER
OF SECTION 18 T1N OF R10E BEING ALSO THE NORTH EAST
CORNER OF SECTION 13 TOWNSHIP 1 NORTH R9E. THE
COUNTY LINE TO BE THE CENTER OF SAID HIGHWAY AND THE
SAID HIGHWAY IS ESTABLISHED FOUR RODS IN WIDTH.
- 1902 MORGAN GREEN COUNTY SURVEYOR (LETTER) MAP #80002
FD NW AND W 1/4 COR IN A CLUMP OF SOFT MAPLE TREES.
- 1902 MORGAN GREEN COUNTY SURVEYOR (LETTER) MAP #80000.
MAP ON BACK OF LETTER SHOWS A RIGHT ANGLE RANDOM
LINE AT THE NW COR SEC 18 TO THE SOUTH LINE OF SW 1/4
SEC 18. MAP SYMBOL INDICATES THE W 1/4 COR SEC 18
AND THE MP. THE ANGLE 89-11 AT THE NW COR SEC 18 TO
THE W 1/4 COR SEC 18 WAS COMPUTED BY TRIG. HE
ASSUMED THE RANDOM LINE TO THE SOUTH LINE FROM THE
NW COR SEC 18 WAS 5280' AND 75.24 TO EAST OF THAT
POINT WAS A

SHEET 1 OF 4

CORNER CODE L-1

Donald Barnes

OCT 1 2002

AV554

STRAIGHT LINE BETWEEN THE W ¼ COR SEC 18 AND THE MP.
HE SHOWS A BEND AT THE W ¼ COR SEC 18 TO A POINT ON
THE SOUTH LINE OF SW ¼ SEC 18 THAT IS 141.24' EAST OF
THE 90 DEGREE RANDOM LINE. THIS POINT IS ABOUT 13-14
EAST OF THE CI AT THE SW COR SEC 18. THE CI MON IS 17'
WEST OF THE N/S CENTER LINE OF CTH "T"

1902 MORGAN GREEN COUNTY SURVEYOR MAP #80001. 2640
FROM NW COR SEC 18. FD IN STUMP OF SOFT MAPLES. SET
BY CO. SURV.

1903 ? LETTER TO KERCH MAP #80003 REEFERS TO DEED AND
SURVEY PROBLEMS IN INTERIOR OF SECTION 18. "THE ONLY
TROUBLE WITH MR. MORGANS SURVEY WAS THAT HE
DISREGARDED THE DEED SHOWN HIM OF THE FIVE ACRE
PIECE FIRST HEREIN DESCRIBED IN WHICH THAT PART
BETWEEN THE BRACKETS WAS OMITTED FOR THE REASON
THAT HE OR ANY ONE ELSE COULD LOCATE THE LAND BY THE
DEFECTIVE DESCRIPTION.

19?? KERCH VOL 3 PG 19. FD CORNER SET BY MORGAN. SET
GRATE BAR IN PLACE. 2641.3' SOUTH OF NW COR SEC 18.
ANGLE OF 89-11 @ NW COR SEC 18 FROM N ¼ TO W ¼
CORNERS OF SEC 18.

1944 SUNNY MAP #65 DIAGRAM OF SECTION "THIS IS TO
CERTIFY THAT THE ABOVE DIAGRAM IS A CORRECT LARGE
SCALE COPY OF THE ORIGINAL GOVERNMENT SURVEY OF
SECTION 18, T1N R10E OF THE 4TH P.M. AS SHOWN BY A
PHOTOGRAPHIC COPY OF THE ORIGINAL SURVEY PLAT
CERTIFIED TO ME BY THE GENERAL LAND OFFICE OF THE
UNITED STATES DEPARTMENT OF INTERIOR.

1953 WI PROJECT 80438(2) RELOCATION PROJECT FROM NW COR
SEC 18 TO A POINT ABOUT 970' NORTH OF THE SW COR SEC
18. PLANS SHOWS EXISTING BRIDGE CROSSING SUGAR
RIVER. THIS OLD BRIDGE ANGLES TOWARDS THE NORTH
EAST AND THE ROAD GOES EASTERLY AROUND A POINT
NEAR THE W ¼ COR SEC 18. THIS POINT BEING STA
19+16.2 WHICH IS 2788' SOUTHERLY FROM THE NW COR
SEC 18.

1977 BARNES VOL 5 PG 297 DIAGRAM OF SEC 18. 5247.34 &
5445.17 (?) FROM W ¼ COR TO E ¼ COR SEC 18.

1977 BARNES VOL 5 PG 300 CORNER NEEDS TO BE DUG FOR.
SET PK ON LINE WITH NW & SW CORNER OF SEC 18. PK IS N
OF NORTH SIDE OF BRIDGE 226.2' AND 2.5' W OF EAST EDGE
OF C.T.H T. 2677.25 TO NW COR SEC 18 & 2686.03 TO SW
COR SEC 18.

1978 TALARCZYK MAP #00067 E ¼ COR SEC 13 T1N R9E.
CORNER SET BY PROPORTIONATE MEASUREMENT AND
EXISTING PHYSICAL EVIDENCE. SET ALUM. MON. NOTE: TOP
OF MONUMENT 0.2' BELOW GRADE & REFERENCED SAME.
ABOUT 242' NORTH OF NORTH END OF BRIDGE & ABOUT 9'
EAST OF CENTER OF PVMT.

SHEET 2 OF 4

CORNER CODE **L-1**

Donald Barnes
OCT 1 2002

AV554

DUG & FOUND 9.6' DEEP METAL GRATE SURROUNDED BY 1 LIMESTONE & 3 HH . AT ABOUT 7' DEEP FOUND OLD ROAD SURFACE. REMOVED GRATE & AT GROUND SURFACE PLACED 3/4X24" REROD /PLASTIC CAP. REFERENCED SAME. MONUMENT NEEDS TO BE PLACE SOMETIME NEXT YEAR AFTER GROUND SETTLES. METAL GRATE SIZE IS: BASE 0.2' X 0.4'; TOP 0.2' X 0.2'; LENGTH 1.4'. IT IS HOLLOW LENGTHWISE. MEASURED 2642.12 DIRECTLY TO CI @ NW COR SEC 18.

C) Was the corner restored through acceptance of (1) an obliterated evidence location, or, (2) a found perpetuated location?

ACCEPTED FOUND GRATE AS PERPETUATED LOGATION.

D) Describe any material discrepancy between the location of the corner as restored or reestablished and the location of that corner as previously restored or reestablished by distance and direction. Show the discrepancy on the plan view drawing under (a), above. Show the distances between the corner as previously restored or reestablished and (1) the corner as restored or reestablished, and (2) to at least 4 of the witness monuments shown on the drawing in (a), above.

S72-03-06E 28.32 TO THE ALUM. MON. THAT TALARCZYK PLACED.

(E) Was the corner reestablished through lost corner proportionate methods? If so, show the method, including the directions and distances to other public land survey corners used as evidence or used for proportioning the corner location.

NO

I, Donald Barnes, hereby certify that the corner location as identified by the corner code index was determined by me under my direction and control and that this U.S. Public Land Survey Monument Record is correct and complete to the best of my knowledge and belief.

Seal

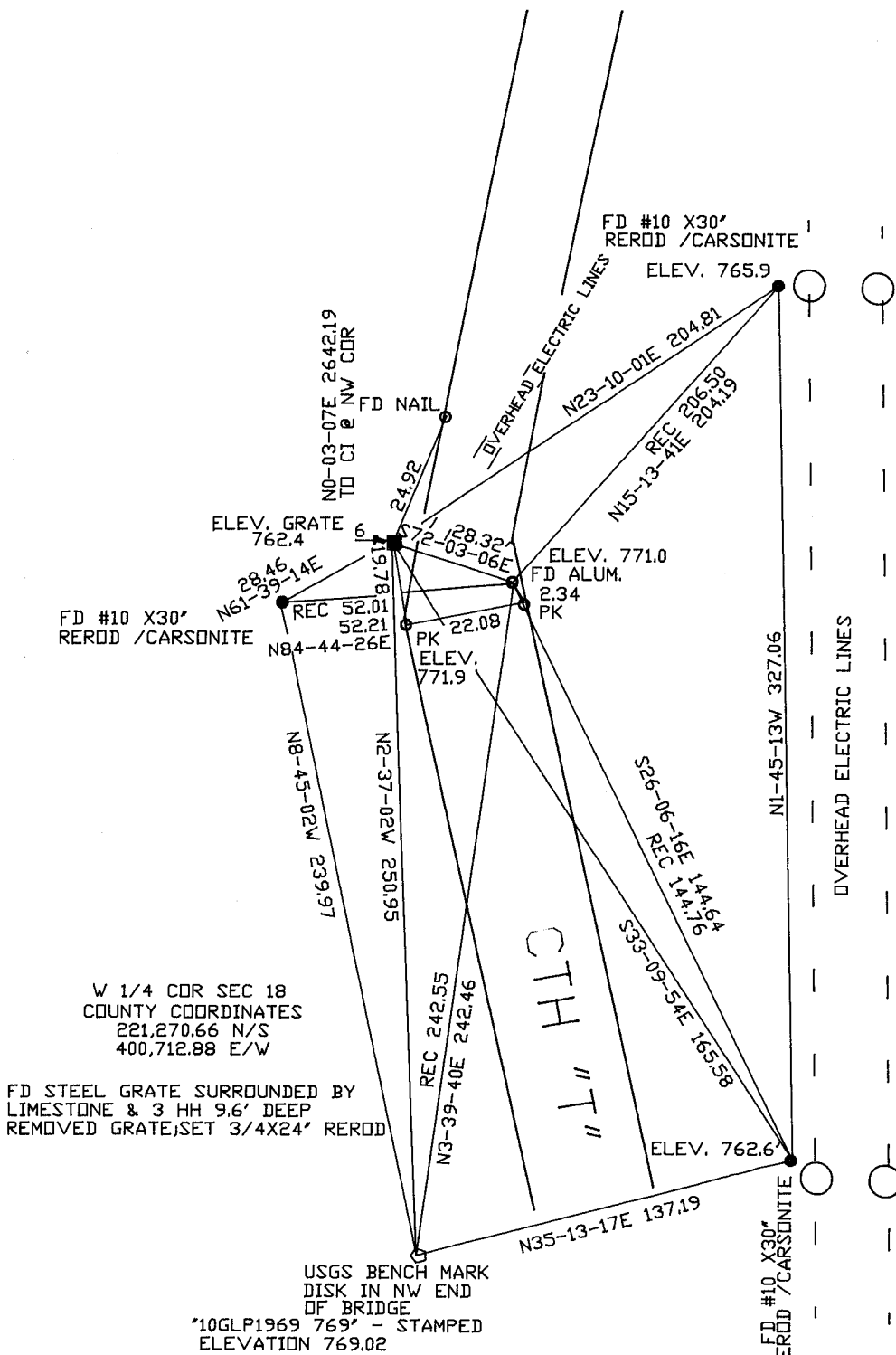
Donald Barnes
Emboss

09/1 2002

SHEET 3 OF 4

CORNER CODE **L-1**

A.E. 7.08 REQUIREMENT



ROCK COUNTY PROJECTION

ROCK COUNTY SURVEY

NOT TO SCALE
FB #2 PG 73 & 74

W 1/4 COR
SEC 18
AVON TWP
T1N R10E

L-1

BRIDGE
SUGAR RIVER

Donald Barnes
EMBOSSED SEAL
OCT 1 2002