

U.S. PUBLIC LAND SURVEY MONUMENT RECORD

For Public Land Survey Corners in:

WI ADMINISTRATIVE CODE A-E 7.08 REQUIREMENT

T. 4N., R. 14E

LI607 CORNER CODE INDEX

LIMA TWP

ROCK COUNTY WI

IF AVAILABLE
ROCK COUNTY COORDINATES PREFERRED

	1	2	3	4	5	6	7	8	9	10	11	12	13	14	15	16	17	18	19	20	21	22	23	24	25
A																									
B																									
C	6																								
D																									
E																									
F																									
G	7																								
H																									
I																									
J																									
K	18																								
L																									
M																									
N																									
O																									
P	19																								
Q																									
R																									
S																									
T	30																								
U																									
V																									
W																									
X	31																								
Y																									
Z																									

PLACE MONUMENT SYMBOL AT PROPER LOCATION ON ABOVE INDEX

North _____ Elev. _____

East _____

Hor. Datum _____ Vert. Datum _____

LATITUDE _____ ELLIPS. HT. _____

LONGITUDE _____

GPS (X) _____ TRAVERSE (X) _____

BASED ON THE FOLLOWING CONTROL:

CORNER MONUMENT

WITNESS MONUMENT

(a)

BEARINGS ARE BASED ON: _____

OBSERVATION SHEET

FIELD BOOK _____ PAGE # _____

SHEET 1 OF 2

SHOW A PLAN VIEW DRAWING DEPICTING THE CORNER MONUMENT AND SURROUNDING PHYSICAL FEATURES, INCLUDING THE EXCAVATION AREA AND DEPTH.

PLANNING & ZONING COMMITTEE ADOPTED THE ABOVE FORM ON 12/2/1982

CORNER CODE V-13(1)

LI607

(B) Describe any record evidence, monument evidence, occupational evidence, testimonial evidence or any other material evidence you considered, and whether the monument was found or placed.

- 1866 LOCKE VOL 1 PG 264 FOUND STUMPS OF N. B.T. & OLD STAKE. SET STAKE. 2661.12 TO S 1/4 COR SEC 27 & 2640.66 TO W 1/4 COR SEC 27.
- 1871 RUGER VOL 2 PG 55 FD STAKE & 2 HH STONES PLACED ANOTHER HH BY STAKE MAKING IT 3 IN ALL. 2661.12 TO S 1/4 COR SEC 27.
- 1977 BARNES VOL 5 PG 290 FORMER COUNTY DUG & FOUND NOTHING. I ALSO DUG & FOUND NOTHING. SET COR. AT REC. DISTANCE FROM S 1/4 COR SEC 27 & OCCUPATION TO THE NORTH. N/S FENCE LINE IS AT RECORD DISTANCE FROM S 1/4 COR SEC 27. SET ALUM. & REF SAME.
- 1977 BARNES VOL 5 PG 291 EDM 2673.62 TO S 1/4 COR SEC 28. S 1/4 COR SEC 28 IS MIDWAY BETWEEN THE SE & SW CORNERS OF SEC 28.
- 1978 BARNES VOL 5 PG 485 INFORMATION SUPPLIED BY LEE. N89-47-44E 2671.26 TO S 1/4 COR SEC 27 & S3-19-42E 2644.43 TO W 1/4 COR SEC 34
- 1983 BARNES REMONUMENTATION N87-50-25W 2673.34 TO S 1/4 COR SEC 28, S87-06-37E 2661.07 TO S 1/4 COR SEC 27, N0-14-29E 2643.28 TO W 1/4 COR SEC 27, S0-15-48E 2647.16 TO W 1/4 COR SEC 34, & S86-44-46E 2666.21 FROM S 1/4 TO SE CORNERS OF SEC 27.
- 1985 DOT V-13 CALLS FOR ALUM. MON. REFERENCED SAME.

FD PK & REFERENCE TIES. THE PK IS IN HARMONY WITH THE INTERSECTION OF THE RECORD TIE DISTANCES THAT I ESTABLISHED.

C) Was the corner restored through acceptance of (1) an obliterated evidence location, or, (2) a found perpetuated location?

ACCEPTED FOUND PK.

D) Describe any material discrepancy between the location of the corner as restored or reestablished and the location of that corner as previously restored or reestablished by distance and direction. Show the discrepancy on the plan view drawing under (a), above. Show the distances between the corner as previously restored or reestablished and (1) the corner as restored or reestablished, and (2) to at least 4 of the witness monuments shown on the drawing in (a), above.

(E) Was the corner reestablished through lost corner proportionate methods? If so, show the method, including the directions and distances to other public land survey corners used as evidence or used for proportioning the corner location.

I, Donald Barnes, hereby certify that the corner location as identified by the corner code index was determined by me under my direction and control and that this U.S. Public Land Survey Monument Record is correct and complete to the best of my knowledge and belief.

seal



Number of included sheets 1

emboss

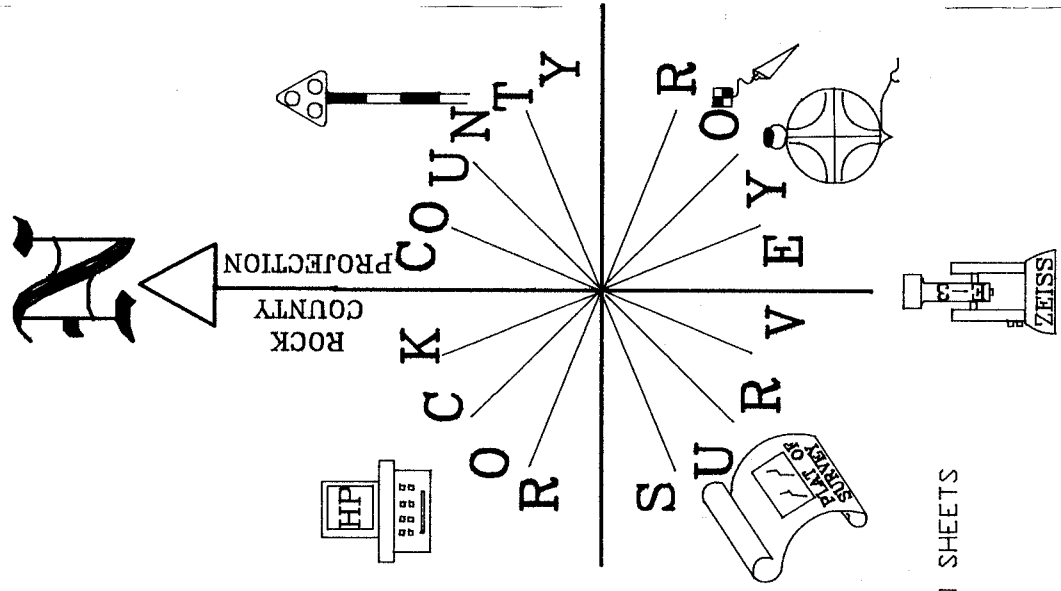
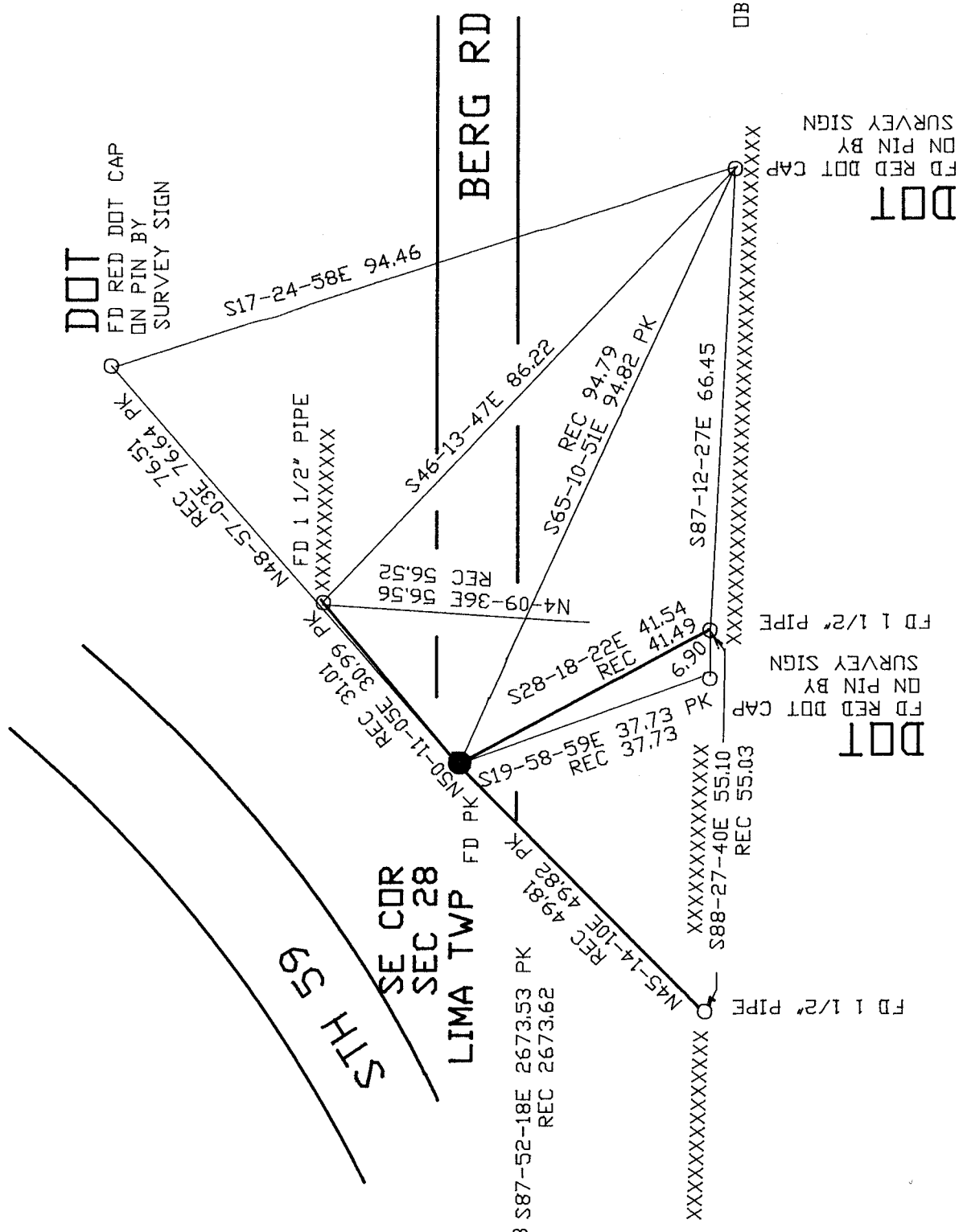
May 12, 1999

CORNER CODE V-13(1)

EMBOSSED SEAL
Donald Baues
 May 12 1999

V-13(1)

S 1/4
 CDR SEC 28 S87-52-18E 2673.53 PK
 REC 2673.62



OBSERVATION SHEETS

DOT

FD RED DOT CAP
 ON PIN BY
 SURVEY SIGN

DOT

FD RED DOT CAP
 ON PIN BY
 SURVEY SIGN

FD 1 1/2\"/>

XXXXXXXXXXXXXXXXXXXX
 S88-27-40E 55.10
 REC 55.03

XXXXXXXXXXXXXXXXXXXX
 S87-12-27E 66.45

XXXXXXXXXXXXXXXXXXXX
 N4-09-36E 56.56
 REC 56.52

XXXXXXXXXXXXXXXXXXXX
 N48-57-03E 76.64
 REC 76.51 PK

XXXXXXXXXXXXXXXXXXXX
 S65-10-51E 94.82 PK
 REC 94.79

XXXXXXXXXXXXXXXXXXXX
 S46-13-47E 86.22

XXXXXXXXXXXXXXXXXXXX
 S17-24-58E 94.46