

U.S. PUBLIC LAND SURVEY MONUMENT RECORD

For Public Land Survey Corners In:
T. 4 N. R. 14 E. 4th P.M.
CORNER CODE INDEX

WI ADMINISTRATIVE CODE A-E 7.08 REQUIREMENT
REV 10/23/2004 USMONREC.DWG

1	2	3	4	5	6	7	8	9	10	11	12	13	14	15	16	17	18	19	20	21	22	23	24	25	
A																									A
B	6																								B
C		5																							C
D			4																						D
E				3																					E
F					2																				F
G						1																			G
H	7																								H
I		8																							I
J			9																						J
K				10																					K
L					11																				L
M						12																			M
N							13																		N
O								14																	O
P									15																P
Q										16															Q
R											17														R
S												18													S
T													19												T
U														20											U
V															21										V
W																22									W
X																	23								X
Y																		24							Y
Z																			25						Z

14 TWP
ROCK COUNTY WI

IF AVAILABLE
ROCK COUNTY COORDINATES PREFERRED

North _____ Elev. _____

East _____

Hor. Datum _____ Vert. Datum _____

LATITUDE _____ ELLIPS. HT. _____

LONGITUDE _____

NAD83(91) _____ NETWORK ADJ. YR _____

GPS (X) _____ TRAVERSE (X) _____

BASED ON THE FOLLOWING CONTROL:

◆ CORNER MONUMENT

○ WITNESS MONUMENT

(a)

BEARINGS ARE BASED ON: _____

FIELD BOOK _____ PAGE # _____

SHEET 1 OF 1

SHOW A PLAN VIEW DRAWING DEPICTING THE CORNER MONUMENT AND SURROUNDING PHYSICAL FEATURES, INCLUDING THE EXCAVATION AREA AND DEPTH.

PLANNING & ZONING COMMITTEE ADOPTED THIS FORM ON 12/2/1982

CORNER CODE T-25 (1)

RECORD OF U. S. PUBLIC LAND SURVEY CONTROL STATION

U. S. PUBLIC LAND SURVEY CORNER 25|30 T 4 N, R 14/15 E, ROCK/WALWORTH COUNTY, WISCONSIN
25|30

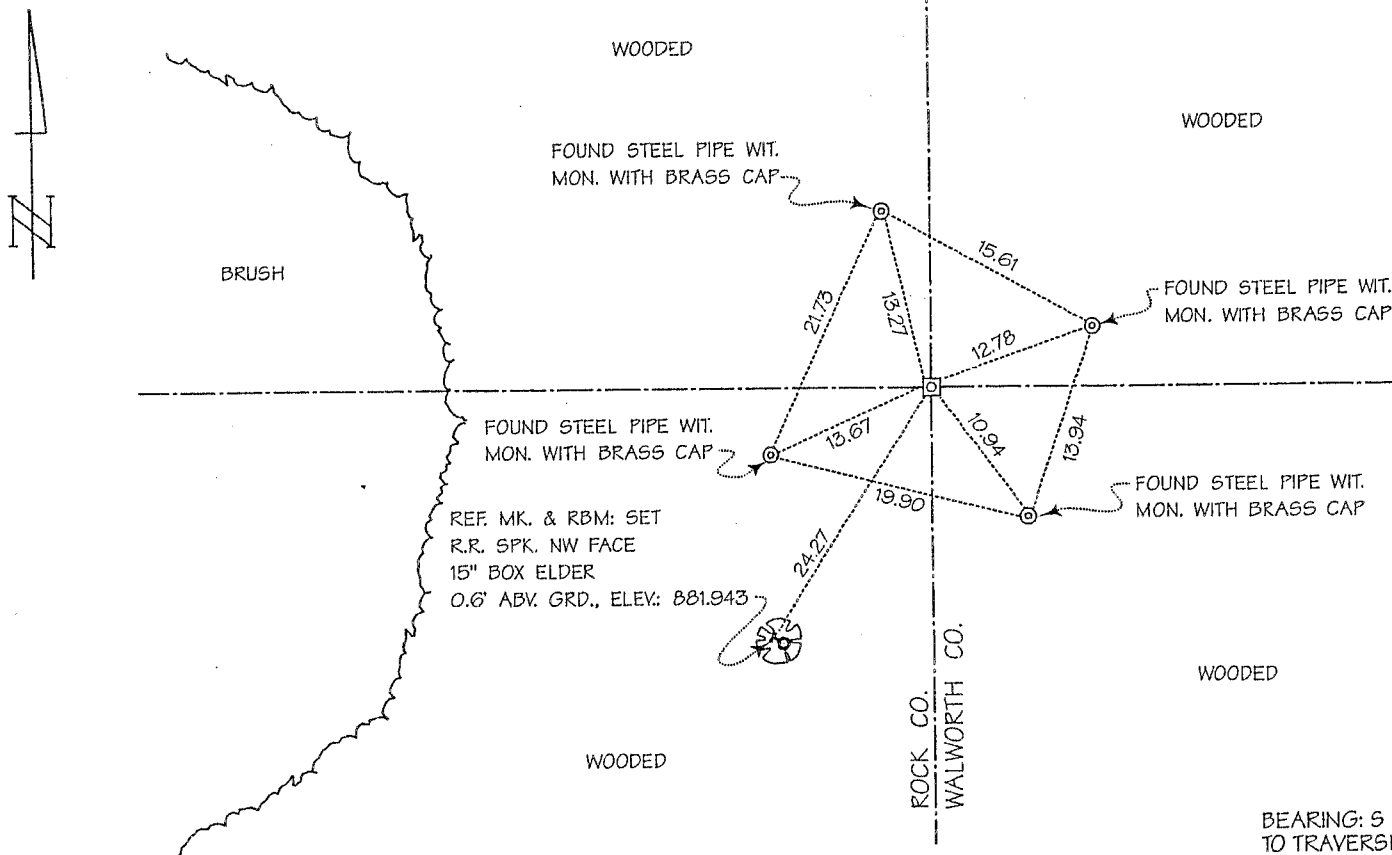
HORIZONTAL CONTROL SURVEY BY: AYRES ASSOCIATES YEAR: 2004
 VERTICAL CONTROL SURVEY BY: AYRES ASSOCIATES YEAR: 2004

STATE PLANE COORDINATES OF: QUARTER SECTION CORNER
 NORTH 285,403.87
 EAST 2,327,992.39
 ELEVATION OF STATION: 881.418

HORIZONTAL DATUM: WISCONSIN STATE PLANE COORDINATE SYSTEM, SOUTH ZONE
 NORTH AMERICAN DATUM OF 1927

VERTICAL DATUM: NATIONAL GEODETIC VERTICAL DATUM OF 1929 THETA ANGLE: +0-50-21
 CONTROL ACCURACY:
 HORIZONTAL: THIRD ORDER, CLASS I VERTICAL: SECOND ORDER, CLASS II

LOCATION SKETCH:

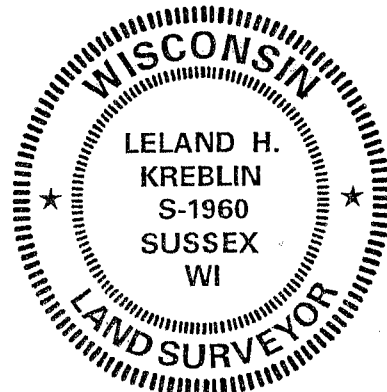


BEARING: S 51-39-08 W
 TO TRAVERSE STA. 5380

SURVEYOR'S AFFIDAVIT:

STATE OF WISCONSIN) SS
WALWORTH COUNTY)

As Walworth County Surveyor, I hereby certify that I found a cut limestone monument with Walworth County brass cap as set to mark this corner in October 1997 by Lloyd L. Jensen, S-211, Walworth County Surveyor; replacing a two-inch-diameter by five-foot-long iron pipe set to mark this corner in May 1983 by Donald A. Barnes, S-1216, Rock County Surveyor, using single proportional measurement between the northeast and southeast corners of Section 25, Township 4 North, Range 14 East; that I referenced the same as shown hereon; and that this record is correct and complete to the best of my knowledge and belief.



DATE OF SURVEY: 22 SEPTEMBER 2004 Leland H. Kreblin S - 1960
 REVISED: 6 JUNE 2005 REGISTERED LAND SURVEYOR

T-25(1)