

(B) Describe any record evidence, monument evidence, occupational evidence, testimonial evidence or any other material evidence you considered, and whether the monument was found or placed.

1871 RUGER REMONUMENTATION NOTES COMMENCED AT NE CORNER OF SECTION 36 (MILTON TWP) FOUND OLD STAKE WITH STONES NEAR IT. ALSO FOUND SW BEARING TREE. CALLS FOR 2640.83 TO S 1/4 CORNER OF SECTION 25, 2645.28 TO E 1/4 CORNER SECTION 25, 2643.30 E 1/4 CORNER SECTION 36 MILTON TOWNSHIP.

1871 RUGER VOL 2 PG 80 CALLS FOR STONE MONUMENT & 2437.88 TO S 1/4 CORNER OF SECTION 20.

1875 RUGER VOL 2 PG 198 CALLS FOR STONE MONUMENT.

1899 BROWN VOL 2 PG 509 CALLS FOR MONUMENT & 2640.00 TO S 1/4 COR SEC 25 MILTON TWP.

1962 BATTERMAN JR. VOL 4 PG 123 FOUND 1" PIPE & STATES CORNER IS 0.75 NORTH OF CENTER OF PVMT AND PLACED TIES.

1969 THOM PLAT OF SURVEY 2445.26

198? DOT V-1(1) PLACED TIES AND STATES "1.92 _ TO REF. LINE (LT) 196+28.84.

1982 BARNES LIMA REMONUMENTATION FOUND 1" PIPE. CALLS FOR 2444.35 TO S 1/4 CORNER SEC 30, 2645.35 TO W 1/4 COR SECTION 31, 2648.51 TO W 1/4 CORNER SEC 30, 283,325.51; 2,296,352.39

1983 DOT R/W MAP FOUND IRON PIN; 283,327.04; 2,296,352.00; S1-14-51E 2644.18 (STATE PLANE) TO W 1/4 CORNER SECTION 31.

1983 BARNES MILTON TWP REMONUMENTATION 2642.90 TO S 1/4 CORNER SEC 25, 2643.30 TO E 1/4 COR SECTION 36, AND 2648.51 TO E 1/4 CORNER SECTION 25.

PLACED SMALL R/R SPIKE.

C) Was the corner restored through acceptance of (1) an obliterated evidence location, or, (2) a found perpetuated location?

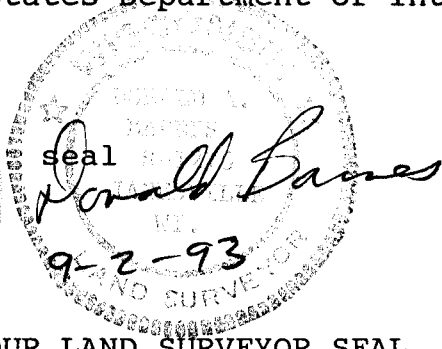
CORNER RESTORED THROUGH ACCEPTANCE OF OBLITERATED EVIDENCE LOCATION. USED THE 1" PIPE REFERENCE MONUMENT TO THE NORTHEAST & THE BENT PIPE TO THE SE. THIS LOCATION IS IN HARMONY WITH DOT'S TIE TO THE NORTHWEST.

D) Describe any material discrepancy between the location of the corner as restored or reestablished and the location of that corner as previously restored or reestablished by distance and direction. Show the discrepancy on the plan view drawing under (a), above. Show the distances between the corner as previously restored or reestablished and (1) the corner as restored or reestablished, and (2) to at least 4 of the witness monuments shown on the drawing in (a), above.

FOUND PK.

(E) Was the corner reestablished through lost corner proportionate methods? If so, show the method, including the directions and distances to other public land survey corners used as evidence or used for proportioning the corner location.

I, Donald Barnes, hereby certify that the corner points as identified by the corner code index were, in a field survey on, November 9, 1992, established, re-established, monumented, re-monumented, recovered or restored as expressed below and in conformance with the regulations and rules as required in the current manual of survey instructions of the United States Department of Interior, Bureau of Land Management.



AFFIX YOUR LAND SURVEYOR SEAL

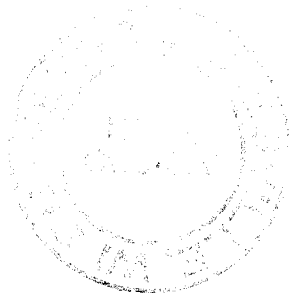
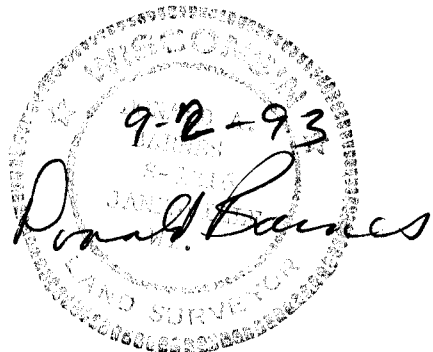
COUNTY SURVEYOR FILING DATA

Date of computer entry _____

Date microfilmed _____

Number of included sheets 2
CORNER CODE

v1 (2)



REFERENCE LINE COMPUTED FROM
1982 TWP PROJECT DATA, DOT
R/W MAP, & NEW FIELD DATA.

DOT 180-09-53.5
180-12-44

DOT 180-20-24
180-20-52

DOT 180-05-04
180-04-23

STA 1938.86
INV STATE 1938.77
S89-57-58E 1938.86

STA 1858.83
INV STATE 1858.74
S89-45-14E 1858.89

STA 1886.47
INV STATE 1886.38
S89-24-22E 1886.53

STA 2593.62
INV STATE 2593.48
S88-04-51E 2593.60

DOT 196+99.98
PI
FD PK

DOT 216+38.84
PI
FD PK

DOT 234+97.67
PI

DOT 277+94.96
PI

DOT 303+88.58
PI
FD PK

DOT 283,325.18
2,296,423.17
NAD 27 R/W PLAT

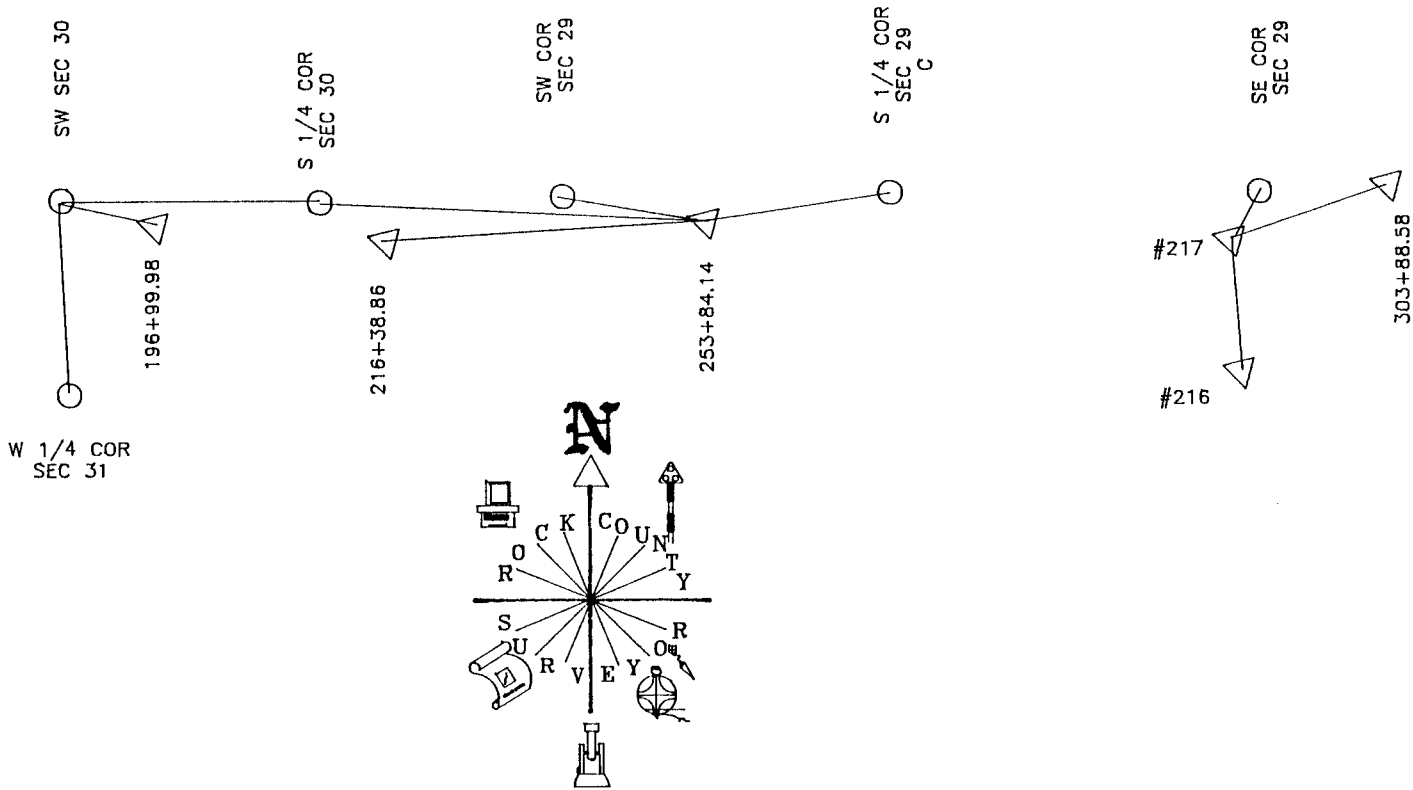
DOT 283,345.82
2,298,361.83
NAD 27 R/W PLAT

DOT 283,360.26
2,300,220.51
NAD 27 R/W PLAT

DOT 283,314.32
2,304,517.08
NAD 27 R/W PLAT

DOT 283,257.37
2,307,109.94
NAD 27 R/W PLAT

1982 TWP PROJECT



V(2)