

# U.S. PUBLIC LAND SURVEY MONUMENT RECORD

For Public Land Survey Corners In:

WI ADMINISTRATIVE CODE A-E 7.08 REQUIREMENT

T. 4 N. R. 14 E. 4th P.M.

REV 10/23/2004

USMONREC.DWG

### CORNER CODE INDEX

L1M A TWP

ROCK COUNTY WI

IF AVAILABLE

ROCK COUNTY COORDINATES PREFERRED

	1	2	3	4	5	6	7	8	9	10	11	12	13	14	15	16	17	18	19	20	21	22	23	24	25		
A																											A
B																											B
C																											C
D																											D
E																											E
F																											F
G																											G
H																											H
J																											J
K																											K
L																											L
M																											M
N																											N
O																											O
P																											P
Q																											Q
R																											R
S																											S
T																											T
U																											U
V																											V
W																											W
X																											X
Y																											Y
Z																											Z

North \_\_\_\_\_ Elev. \_\_\_\_\_

East \_\_\_\_\_

Hor. Datum \_\_\_\_\_ Vert. Datum \_\_\_\_\_

LATITUDE \_\_\_\_\_ ELLIPS. HT. \_\_\_\_\_

LONGITUDE \_\_\_\_\_

NAD83(91) \_\_\_\_\_ NETWORK ADJ. YR \_\_\_\_\_

GPS (X) \_\_\_\_\_ TRAVERSE (X) \_\_\_\_\_

BASED ON THE FOLLOWING CONTROL:

PLACE MONUMENT SYMBOL  AT PROPER LOCATION ON ABOVE INDEX

CORNER MONUMENT

WITNESS MONUMENT

(a)

BEARINGS ARE BASED ON: -----

FIELD BOOK \_\_\_\_\_ PAGE # \_\_\_\_\_

SHEET 1 OF 1

SHOW A PLAN VIEW DRAWING DEPICTING THE CORNER MONUMENT AND SURROUNDING PHYSICAL FEATURES, INCLUDING THE EXCAVATION AREA AND DEPTH.

PLANNING & ZONING COMMITTEE ADOPTED THIS FORM ON 12/2/1982

CORNER CODE 1-25(2)

**RECORD OF U. S. PUBLIC LAND SURVEY CONTROL STATION**

U. S. PUBLIC LAND SURVEY CORNER 25|30 T 4 N, R 14/15 E, ROCK/WALWORTH COUNTY, WISCONSIN  
36|31

HORIZONTAL CONTROL SURVEY BY: AYRES ASSOCIATES YEAR: 2004  
 VERTICAL CONTROL SURVEY BY: AYRES ASSOCIATES YEAR: 2004

STATE PLANE COORDINATES OF: SECTION CORNER  
 NORTH 282,760.91  
 EAST 2,327,985.32

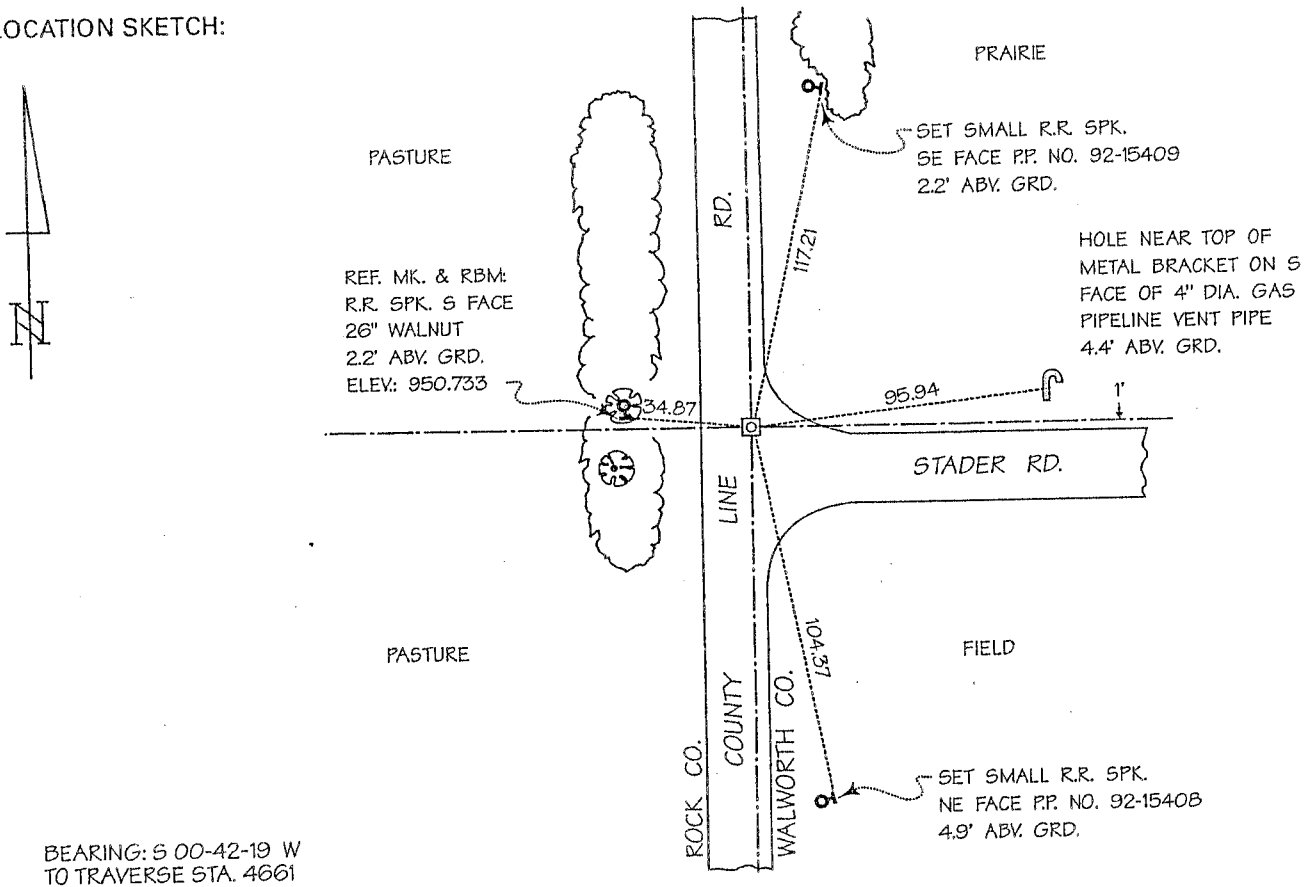
ELEVATION OF STATION: 952.188

HORIZONTAL DATUM: WISCONSIN STATE PLANE COORDINATE SYSTEM, SOUTH ZONE  
 NORTH AMERICAN DATUM OF 1927

VERTICAL DATUM: NATIONAL GEODETIC VERTICAL DATUM OF 1929 THETA ANGLE: +0-50-21

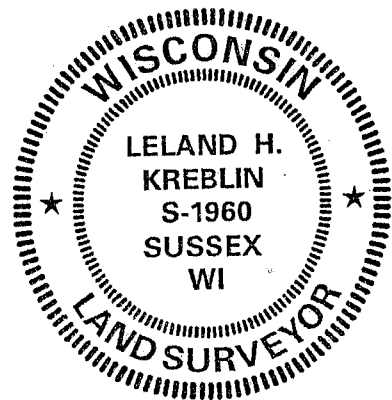
CONTROL ACCURACY:  
 HORIZONTAL: THIRD ORDER, CLASS I VERTICAL: SECOND ORDER, CLASS II

LOCATION SKETCH:



SURVEYOR'S AFFIDAVIT:  
 STATE OF WISCONSIN) SS  
WALWORTH COUNTY)

As Walworth County Surveyor, I hereby certify that I found a concrete monument with Walworth County brass cap as set to mark this corner in June 1975 by Lloyd L. Jensen, S-211, Walworth County Surveyor; replacing a "hard head" stone and a subsurface wood stake then marking this corner; that I referenced the same as shown hereon; and that this record is correct and complete to the best of my knowledge and belief.



DATE OF SURVEY: 6 MAY 2004 Leland H. Kreblin S - 1960  
 REVISED: 8 JUNE 2005 REGISTERED LAND SURVEYOR

V-25(2)