

U.S. PUBLIC LAND SURVEY MONUMENT RECORD

For Public Land Survey Corners in:

WI ADMINISTRATIVE CODE A-E 7.08 REQUIREMENT

T. 4 N., R. 14 E
S CORNER 1/4

A	1	2	3	4	5	6	7	8	9	10	11	12	13	14	15	16	17	18	19	20	21	22	23	24	25
B																									
C	6																								
D																									
E																									
F																									
G	7																								
H																									
J																									
K																									
L	18																								
M																									
N																									
O																									
P	19																								
Q																									
R																									
S	30																								
T																									
U																									
V																									
W																									
X	31																								
Y																									
Z																									

LIMA TWP

ROCK COUNTY WI

IF AVAILABLE
ROCK COUNTY COORDINATES PREFERRED

North _____ Elev. _____

East _____

Hor. Datum _____ Vert. Datum _____

LATITUDE _____ ELLIPS. HT. _____

LONGITUDE _____

GPS (X) _____ TRAVERSE (X) _____

BASED ON THE FOLLOWING CONTROL:

PLACE MONUMENT SYMBOL \blacklozenge AT PROPER LOCATION ON ABOVE INDEX

\blacklozenge CORNER MONUMENT

\circ WITNESS MONUMENT

(a)

THOMAS WOLLIN, JEFFERSON COUNTY SURVEYOR,
PROVIDED THE STATE PLANE COORDINATES FOR
CORNER CODE #4901 CORNER SEC 1 T 4 N R 14 E

STATE PLANE COORDINATES N/S 309,542,817
NAD 1983/91 OF RECORD E/W 2,296,474,538

I DONALD BARNES CONVERTED THE ABOVE
COORDINATES TO THE FOLLOWING:

LATITUDE 42-50-33.69897
LONGITUDE 88-46-37.47207
MERIDIAN CONV. 0-50-25.0
SCALE FACTOR 0.9999797470

ROCK COUNTY COORDINATES (NAD 1983/91)

N/S 327,506.072
E/W 559,162.135
SCALE 1,000.0031588
CONVERGENCE: THE ANGULAR DIFFERENCE
BETWEEN THE GEODETIC NORTH & THE ROCK
COUNTY MERCATOR NORTH

\oplus DEG 0 MIN 12 SEC 02.5

Donald Barnes
2/12/03

BEARINGS ARE BASED ON:

FIELD BOOK _____ PAGE # _____

SHEET 1 OF 1

SHOW A PLAN VIEW DRAWING DEPICTING THE CORNER MONUMENT AND SURROUNDING PHYSICAL FEATURES, INCLUDING THE EXCAVATION AREA AND DEPTH.

PLANNING & ZONING COMMITTEE ADOPTED THE ABOVE FORM ON 12/2/1982

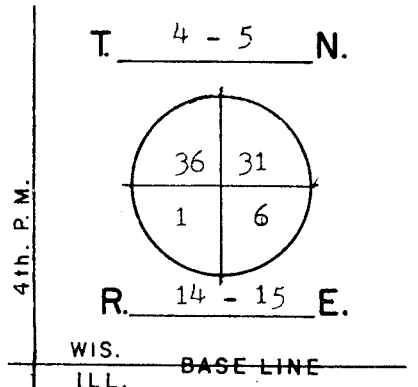
CORNER CODE A-25 (2)

GOVERNMENT LAND CORNER RECORD*

JEFFERSON COUNTY

CORNER NO. 4901

TYPE OF MONUMENT Concrete & Iron Pipe
 STATE PLANE COORDINATES N. 309542.817
NAD 1983/91 E. 2296474.538 SE-36
 ELEVATION M.S.L. DATUM: _____
 Grid-Ground 1.0000559588
 FIELD BOOK Cold Spring p. 13
 DRAWN BY TRW



BASIS FOR MONUMENTATION

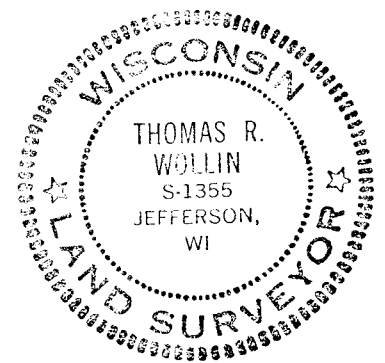
Original Survey, 1836, Wood Post & Bearing Trees
 Woshkonong Resurveyed, 1886, by M.C. Jones. Square
 cut limestone monuments were set.

Cornerstone was found and referenced by Walworth
 County Surveyor sometime in the 1960's. A Concrete
 Monument with iron pipe extension was set for the
 Corner.

4/4/1978, Rock County Surveyor, found and checked
 references with corner monument.

3/18/2002, G.P.S. coordinates are assigned. A Topcon
 GP-SX1 single-frequency receiver was used.

SEAL:

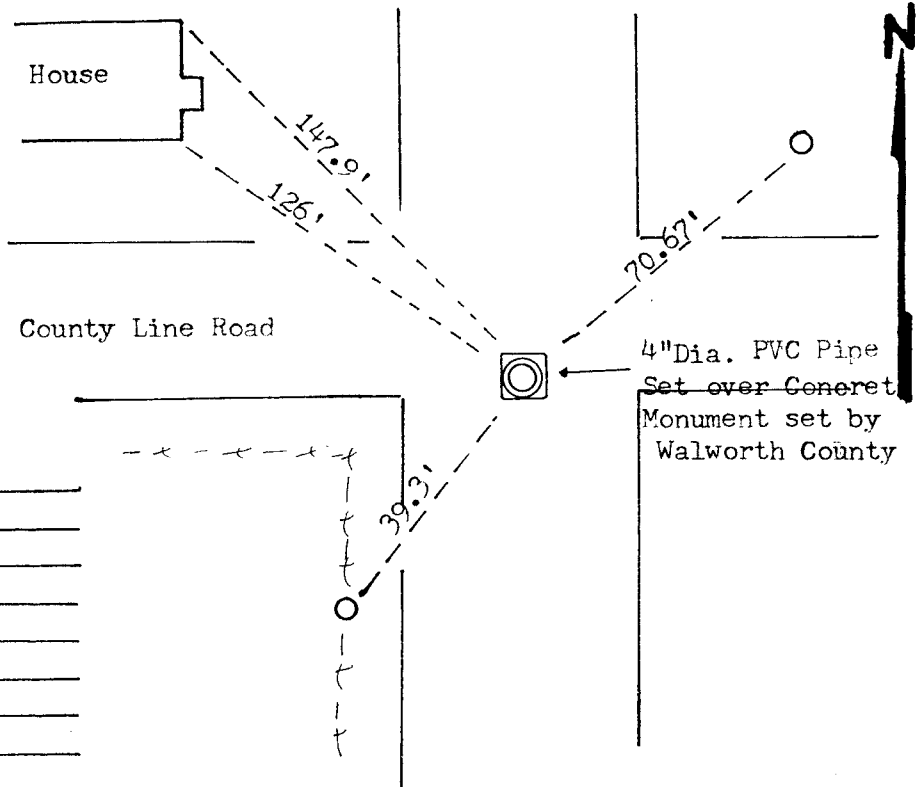


DATA SHOWN HERE ON
 CERTIFIED CORRECT:

Thomas R. Wollin
 REGISTERED LAND SURVEYOR
 DATED 12/17/1979

LOCATION SKETCH

- SQUARE CUT LIMESTONE
- CONCRETE / BRASS CAP
- ALUMINUM MAGNETIZED
- IRON PIPE 1" by 24"
- RR SPIKE
- PK NAIL
- ~~***~~ FENCE
- UTILITY POLE
- STEEL POST / SIGN



MAINTENANCE RECORD

DATE	INIT.	REMARKS