

# U.S. PUBLIC LAND SURVEY MONUMENT RECORD

For Public Land Survey Corners in:  
T. 4 N., R. 13 E 4th P.M.  
CORNER CODE INDEX

WI ADMINISTRATIVE CODE A-E 7.08 REQUIREMENT

	1	2	3	4	5	6	7	8	9	10	11	12	13	14	15	16	17	18	19	20	21	22	23	24	25	
A																										
B	6																									
C		5																								
D			A																							
E				3																						
F					2																					
G						1																				
H	1	8	9	10	11	12																				
I																										
J																										
K																										
L																										
M	18	17	16	15	14	13																				
N																										
O																										
P	19	20	21	22	23	24																				
Q																										
R																										
S	30	29	28	27	26	25																				
T																										
U																										
V																										
W																										
X	31	32	33	34	35	36																				
Y																										
Z																										

Lima TWP

ROCK COUNTY, WI

IF AVAILABLE  
ROCK COUNTY COORDINATES PREFERRED

North 317252.17 Elev. \_\_\_\_\_

East 540494.74

Hor. Datum Rock Cty Vert. Datum \_\_\_\_\_

LATITUDE \_\_\_\_\_ ELLIPS. HT. \_\_\_\_\_

LONGITUDE \_\_\_\_\_

ELLIPS. DATUM

NAD83(91) \_\_\_\_\_ COUNTY \_\_\_\_\_ LIST \_\_\_\_\_

GPS (X) \_\_\_\_\_ TRAVERSE (X) \_\_\_\_\_

BASED ON THE FOLLOWING CONTROL:

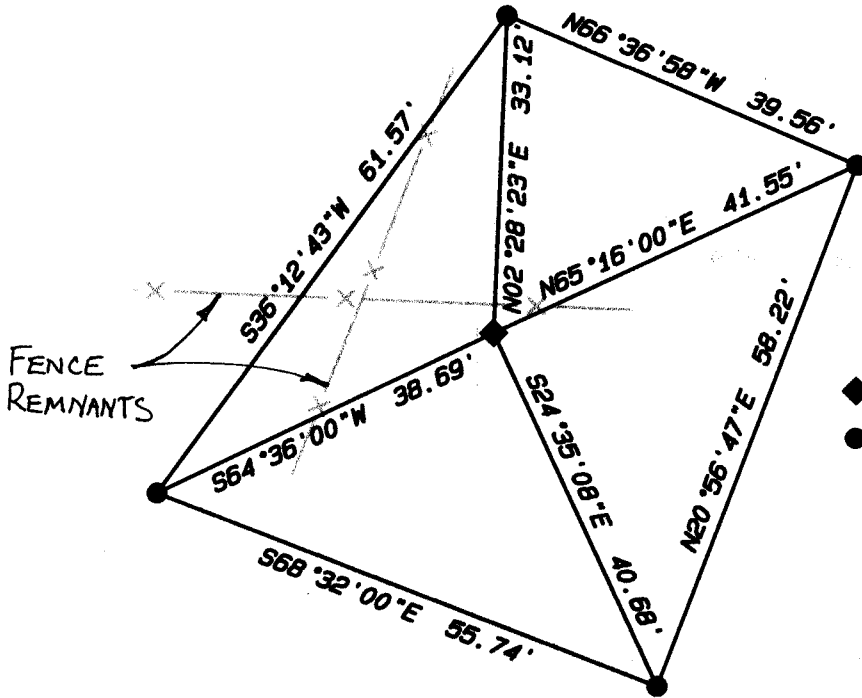
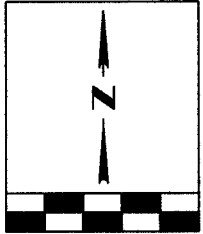
PLACE MONUMENT SYMBOL  AT PROPER LOCATION ON ABOVE INDEX



 CORNER MONUMENT

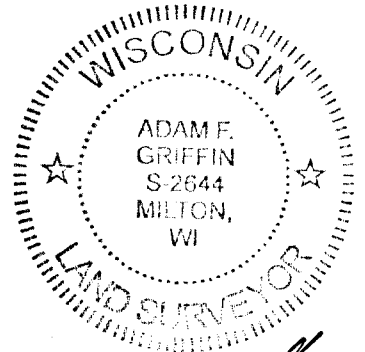
WITNESS MONUMENT

BEARINGS ARE BASED ON: Rock County Coordinate System

SCALE 1" = 20'



-  SET 1" I.D. PIPE
-  SET 3/4 I.D. PIPE



*Adam F. Griffin*

FIELD BOOK \_\_\_\_\_ PAGE # \_\_\_\_\_

SHEET 1 OF 1

SHOW A PLAN VIEW DRAWING DEPICTING THE CORNER MONUMENT AND SURROUNDING PHYSICAL FEATURES, INCLUDING THE EXCAVATION AREA AND DEPTH.

PLANNING & ZONING COMMITTEE ADOPTED THE ABOVE FORM ON 12/2/1982

CORNER CODE J-011

B) Describe any record evidence, monument evidence, occupational evidence, testimonial evidence or any other material evidence you considered, and whether the monument was found or placed.

*Due to a lack of any local evidence other than fence remnants, the South 1/4 corner of section 9-4-13 was set using proportionate methods. The calculated location of the monument is in agreement with the fence remnants, therefore I have accepted this method to determine the restored location of the monument.*

C) Was the corner restored through acceptance of (1) an obliterated evidence location, or, (2) a found perpetuated location?

D) Describe any material discrepancy between the location of the Corner as restored or reestablished and the location of that corner as previously restored or reestablished by distance and direction. Show the discrepancy on the plan view drawing under (a), above. Show the distances between the corner as previously restored or reestablished and (1) the corner as restored or reestablished, and (2) to at least 4 of the witness monuments shown on the drawing in (a), above.

*No discrepancies*

E) Was the corner reestablished through lost corner proportionate methods? If so, show the method, including the directions and distances to other public land survey corners used as evidence or used for proportioning the corner location.

*S1/4 of Sec 9-4-14 was re-established by single proportionate method between the SW and SE corners of said section.*

*The SE corner of Sec 9-4-14 was re-established through double proportionate methods using the SW cor of 9-4-14, the NE cor of 9-4-14, the E1/4 of 16-4-14, and the S1/4 of 10-4-14.*

I, *Adam F. Griffin*, hereby certify that the corner location as identified by the corner code index was determined by me under by direction and control and that this U.S. Public Land Survey Monument Record is correct and complete to the best of my knowledge and belief.

seal

emboss/stamped

Number of included sheets \_\_\_\_\_

A-E 7.08 REQUIREMENT CORNER CODE \_\_\_\_\_