

U.S. PUBLIC LAND SURVEY MONUMENT RECORD

For Public Land Survey Corners in:

WI ADMINISTRATIVE CODE A-E 7.08 REQUIREMENT

T. 4 N., R. 14 E

CORNER CODE INDEX

A	2	3	4	5	6	7	8	9	10	11	12	13	14	15	16	17	18	19	20	21	22	23	24	25
B	6																							
C																								
D																								
E																								
F																								
G	7																							
H																								
J																								
K																								
L	18																							
M																								
N																								
O																								
P	19																							
Q																								
R																								
S																								
T	30																							
U																								
V																								
W																								
X																								
Y																								
Z																								

LIMA TWP

ROCK COUNTY WI

IF AVAILABLE
ROCK COUNTY COORDINATES PREFERRED

North _____ Elev. _____

East _____

Hor. Datum _____ Vert. Datum _____

LATITUDE _____ ELLIPS. HT. _____

LONGITUDE _____

GPS (X) _____ TRAVERSE (X) _____

BASED ON THE FOLLOWING CONTROL:

PLACE MONUMENT SYMBOL AT PROPER LOCATION ON ABOVE INDEX

CORNER MONUMENT

WITNESS MONUMENT

(a)

BEARINGS ARE BASED ON:

FIELD BOOK _____ PAGE # _____

SHEET 1 OF 3

SHOW A PLAN VIEW DRAWING DEPICTING THE CORNER MONUMENT AND SURROUNDING PHYSICAL FEATURES, INCLUDING THE EXCAVATION AREA AND DEPTH.

PLANNING & ZONING COMMITTEE ADOPTED THE ABOVE FORM ON 12/2/1982

CORNER CODE P5

LI575

(B) Describe any record evidence, monument evidence, occupational evidence, testimonial evidence or any other material evidence you considered, and whether the monument was found or placed.

1836 BURNHAM NORTH BETWEEN SECTIONS 19 & 20

594 LEAVE WET PRAIRIE

1039.5 YELLOW OAK 16 IN. DI

1254 WET PRAIRIE

2640 SET 1/4 SEC POST BUR OAK 12 N2W 617.76'

3168 LEAVE WET PRAIRIE

4900.5 W. OAK 12 IN DI

5280 SET POST COR TO 17,18,19&20 BUR O 16 S78 1/2E 12.54',
BUR OAK 7 N53W 42.9' WET PRAIRIE NORTH HALF WET
PRAIRIE & BUR O OPENINGS.

1886 RUGER VOL 2 PG 281 FD REMAINS OF STUMP OF OLD B.T.
DROVE STAKE TO KEEP PLACE OF B.T. STUMP. SET HH STONE
18X10X8 & PUT HH STONE ON S & W SIDES. USED TO SUBDIVIDE
SEC 20.

1996 FEB BARNES FB#3 PG 28 & OBS SHEET #764 SEARCHED FOR
VISUAL SIGHTING OF MONUMENT. MEASURED TO A CUT OFF
TELEPHONE POST THAT IS ABOUT 9' HIGH AND PLACED CARSONITE
POST ABOUT 1' NORTH OF COMPUTED POSITION. DID NOT DIG FOR
OR SEARCH VERY WELL FOR RUGER'S MONUMENT BECAUSE OF THE
WATER.

1996 BARNES R-7 SHOWS ORIG GOV DISTANCE 2640 TO NW & SW
CORNERS SEC 20

I USED THE 1' DIGITAL AIR PHOTOS AND DETERMINED THE CORNER IS ON
THE SOUTH EDGE OF A LARGE BODY OF WATER THAT GOES EAST, WEST
AND NORTH INTO A POND. THE ENTIRE AREA IS WETLANDS. COMPUTED
THE CALLS BEARING AND DISTANCES TO TREES AND BREAKS IN THE
WETLAND AS STATED IN BURNHAM'S FIELD NOTES. THOSE POSITIONS AS
LOCATED ON THE PHOTO'S INDICATES THE WETLAND HAS EXPANDED
GREATLY AND ITEMS CALLED FOR DO NOT EXIST NOW. IT ALSO APPEARS
FROM THE PHOTO THAT THERE IS A NETWORK OF DRAINAGE DITCHES.
THE POSITION OF THE CENTER OF SEC 20 AS SET BY RUGER IS
APPROXIMATELY ON LINE WITH THE WEST EDGE OF N/S DRAINAGE DITCH
AND THE SOUTH EDGE OF THE NORTH DITCH GOING WEST. THE S 1/16TH
COR OF THE NE 1/4 OF SEC 20 AS SET BY RUGER IS APPROXIMATELY 6'
SOUTH OF THE WATER'S EDGE OF THE E/W DRAINAGE DITCH. THE TWO
CORNERS WERE PROBABLY DESTROYED BY DRAINAGE CONSTRUCTION.

UNABLE TO PLACE A MONUMENT BECAUSE OF THE WATER.

C) Was the corner restored through acceptance of (1) an obliterated evidence location, or, (2) a found
perpetuated location?

I ESTABLISHED THE POSITION BY USING RUGER'S SURVEY. THE
DIFFERENCE BETWEEN THE PRORATION OF THE N/S 1/4 LINE AND ALL THE
LINES HE MEASURED WAS ONLY 0.46'. I PLACED THE CORNER ON LINE
WITH THE SW & NW CORNERS OF SEC 20 AND ON LINE WITH THE E 1/4 COR
OF SEC 20 AND THE PRORATED LOCATION OF THE CENTER OF SEC 20.
THIS IS IN HARMONY WITH OCCUPATION AND RECORDS.

D) Describe any material discrepancy between the location of the corner as restored or reestablished and the location of that
corner as previously restored or reestablished by distance and direction. Show the discrepancy on the plan view drawing
under (a), above. Show the distances between the corner as previously restored or reestablished and (1) the corner as
restored or reestablished, and (2) to at least 4 of the witness monuments shown on the drawing in (a), above.

NONE

(E) Was the corner reestablished through lost corner proportionate methods? If so, show the method, including the
directions and distances to other public land survey corners used as evidence or used for proportioning the corner location.

NO

I, Donald Barnes, hereby certify that the corner location as identified by the corner code index was determined by me under
my direction and control and that this U.S. Public Land Survey Monument Record is correct and complete to the best of my
knowledge and belief.

Seal
Donald Barnes

Emboss

1/16/2004

SHEET 1 OF 3

CORNER CODE P-5

A.E. 7.08 REQUIREMENT

80 R/R SPIKE 3.8' EAST OF CENTER OF PVMT; SOUTH SIDE OF INTERSECTION

764 3/4X24 REROD 11' SOUTH OF SOUTH EDGE RD.

700 9' TALL CUT OFF TELEPHONE POST

771 CARSONITE POST IN WETLAND 770 NORTH OF FACE 9' TALL CUT OFF TELEPHONE POST

772 3/4X24 REROD WITH MAGNET. NW OF LARGER POST @ NE CORNER OF PARKING LOT

LIMA TWP
T4N R14E

DNR DRIVE TO PARKING LOT
S89-31-20W 1327.74

HARTZELL RD 8080

SHEET 2 OF 3

8080 BOLT 5' SOUTH OF SOUTH EDGE OF RD & ABOUT 15' EAST OF N/S FENCE ON SOUTH SIDE RD.

86+/- WEST OF N/S FENCE ON NORTH SIDE RD.

8082 BOLT 5' SOUTH OF SOUTH EDGE OF GRAVEL DR.

NE COR
SEC 20
312,067.01N/S
537,778.93E/W

N2-05-31E 5,303.57

CTH KK

N73-32-00E 5,713.76
N65-35-55E 6,021.53

310,447.41 N/S
532,299.52 E/W

N65-30-10E 95.50
N42-52-52E 616.75
N0-16-47E 868.08

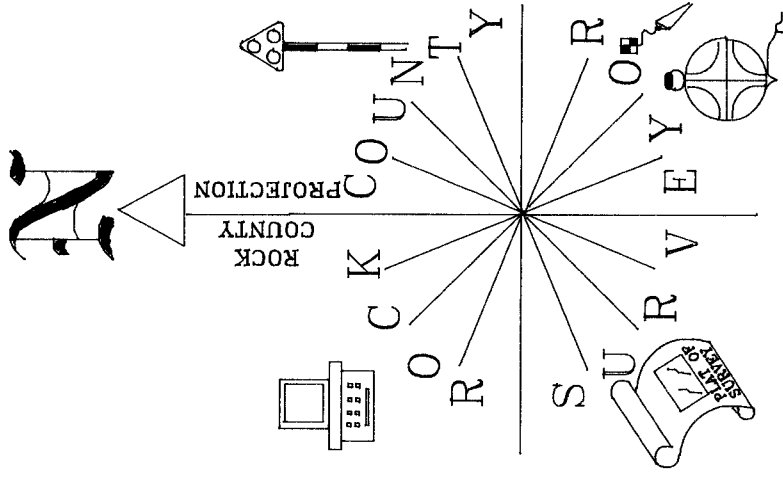
309,579.35
532,295.28 E/W

E 1/4 COR
SEC 19

S62-00-12E 5,991.17

SE COR
SEC 20
306,766.97N/S
537,585.34E/W

ND MONUMENT
S87-42-27E 1320.85
1/4 COR TO 770 N64-52W 39.7'
1/4 COR TO 771 N83-55W 0.7'
770-771 S64-33E 39.1

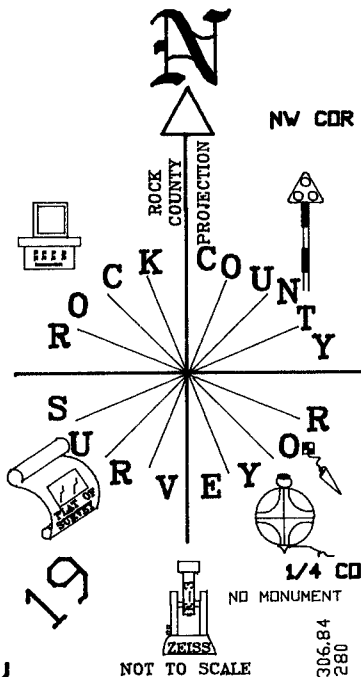


NOT TO SCALE
DEC 17, 2003
ADJUSTMENT

Ronald Barnes
EMBOSSED SEAL
1/16/2004

VICKERMAN RD 80

P 1 5



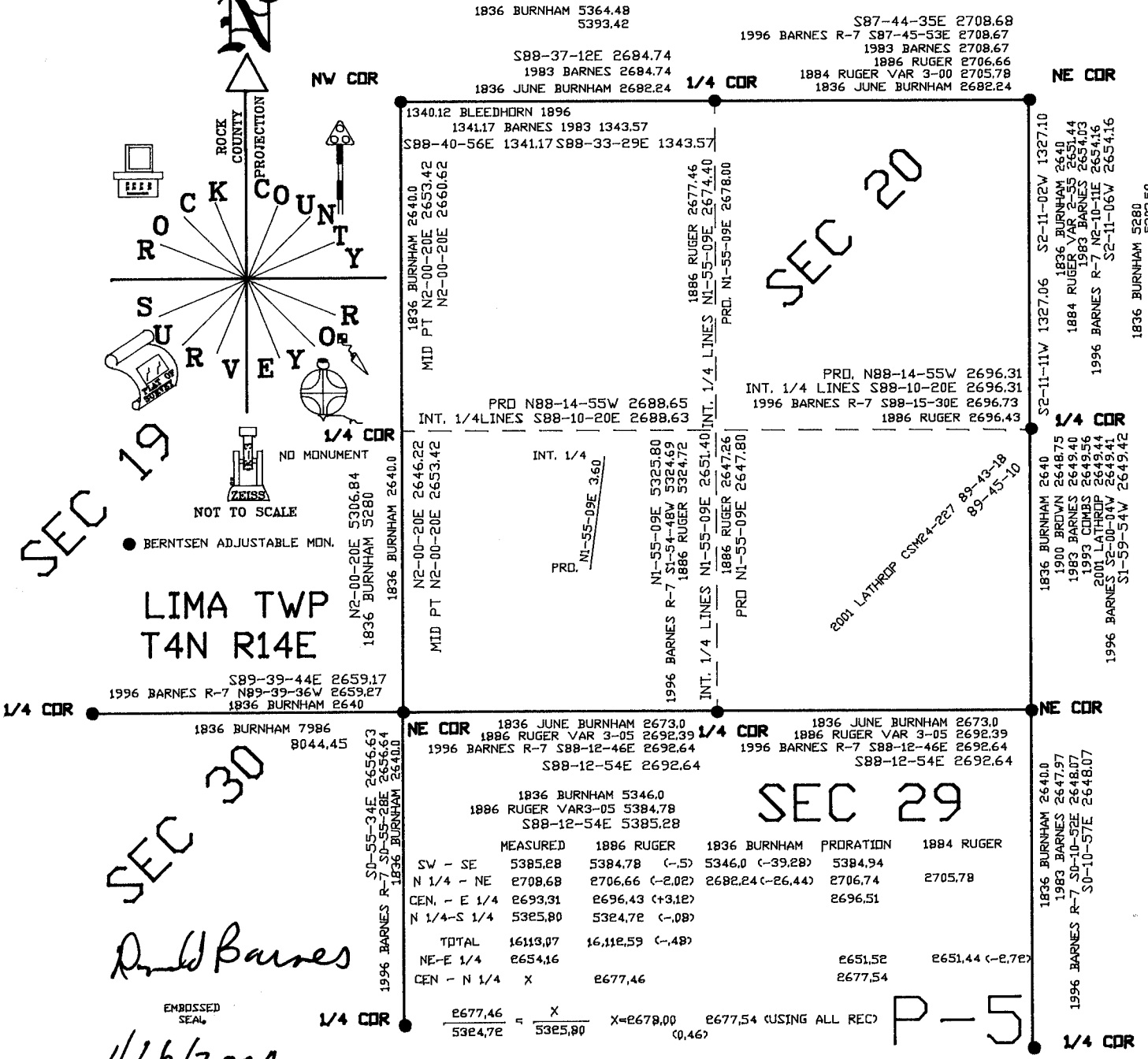
SEC 19

LIMA TWP
T4N R14E

David Barnes

EMBOSSSED SEAL

1/16/2004



SEC 20

SEC 29

P-5

$$\frac{2677.46}{5324.72} = \frac{X}{5325.80} \quad X=2678.00 \quad 2677.54 \text{ (USING ALL REC) } (0.46)$$

1/4 COR

1/4 COR

1836 BURNHAM 5364.48
5393.42
S88-37-12E 2684.74
1983 BARNES 2684.74
1836 JUNE BURNHAM 2682.24
S87-44-35E 2708.68
1996 BARNES R-7 S87-45-53E 2708.67
1983 BARNES 2708.67
1886 RUGER 2706.66
1884 RUGER VAR 3-00 2705.78
1836 JUNE BURNHAM 2682.24

1340.12 BLEEDHORN 1896
1341.17 BARNES 1983 1343.57
S88-40-56E 1341.17 S88-33-29E 1343.57
1836 BURNHAM 2640.0
MID PT N2-00-20E 2653.42
N2-00-20E 2646.22
1836 BURNHAM 2640.0
1836 BURNHAM 2640.0
1886 RUGER 2677.46
INT. 1/4 LINES N1-55-09E 2674.40
PRD. N1-55-09E 2678.00
PRD. N88-14-55W 2696.31
INT. 1/4 LINES S88-10-20E 2696.31
1996 BARNES R-7 S88-15-30E 2696.73
1886 RUGER 2696.43

2001 LATHROP COSM24-227 89-43-18 89-45-10
1836 BURNHAM 2640.0
1900 BROWN 2648.75
1883 BARNES 2649.40
1993 CIMBS 2649.56
2001 LATHROP 2649.44
1996 BARNES S2-00-04W 2649.41
S1-59-54W 2649.42
1836 BURNHAM 2640.0
1886 RUGER 2647.26
1886 RUGER 2647.80
1836 BURNHAM 2640.0
1900 BROWN 2648.75
1883 BARNES 2649.40
1993 CIMBS 2649.56
2001 LATHROP 2649.44
1996 BARNES S2-00-04W 2649.41
S1-59-54W 2649.42

1836 BURNHAM 7986
8044.45
S0-55-34E 2656.63
1996 BARNES R-7 S0-55-28E 2656.64
1836 BURNHAM 2640.0
1836 BURNHAM 2673.0
1886 RUGER VAR 3-05 2692.39
1996 BARNES R-7 S88-12-46E 2692.64
S88-12-54E 2692.64
1836 BURNHAM 2673.0
1886 RUGER VAR 3-05 2692.39
1996 BARNES R-7 S88-12-46E 2692.64
S88-12-54E 2692.64
1836 BURNHAM 2640.0
1883 BARNES 2647.97
1996 BARNES R-7 S0-10-57E 2648.07
S0-10-57E 2648.07