

PLAT AND RECORD

V-3 179

PG 159 BELoit REC
12/12/75 DAB

Of a Survey on Section 34 T 1 R 12 E. of the 4 P. M. in Beloit Township

Rock County, Wisconsin, made AUGUST the 1ST 1930

I hereby certify that the following is a correct record of said survey as made by me.

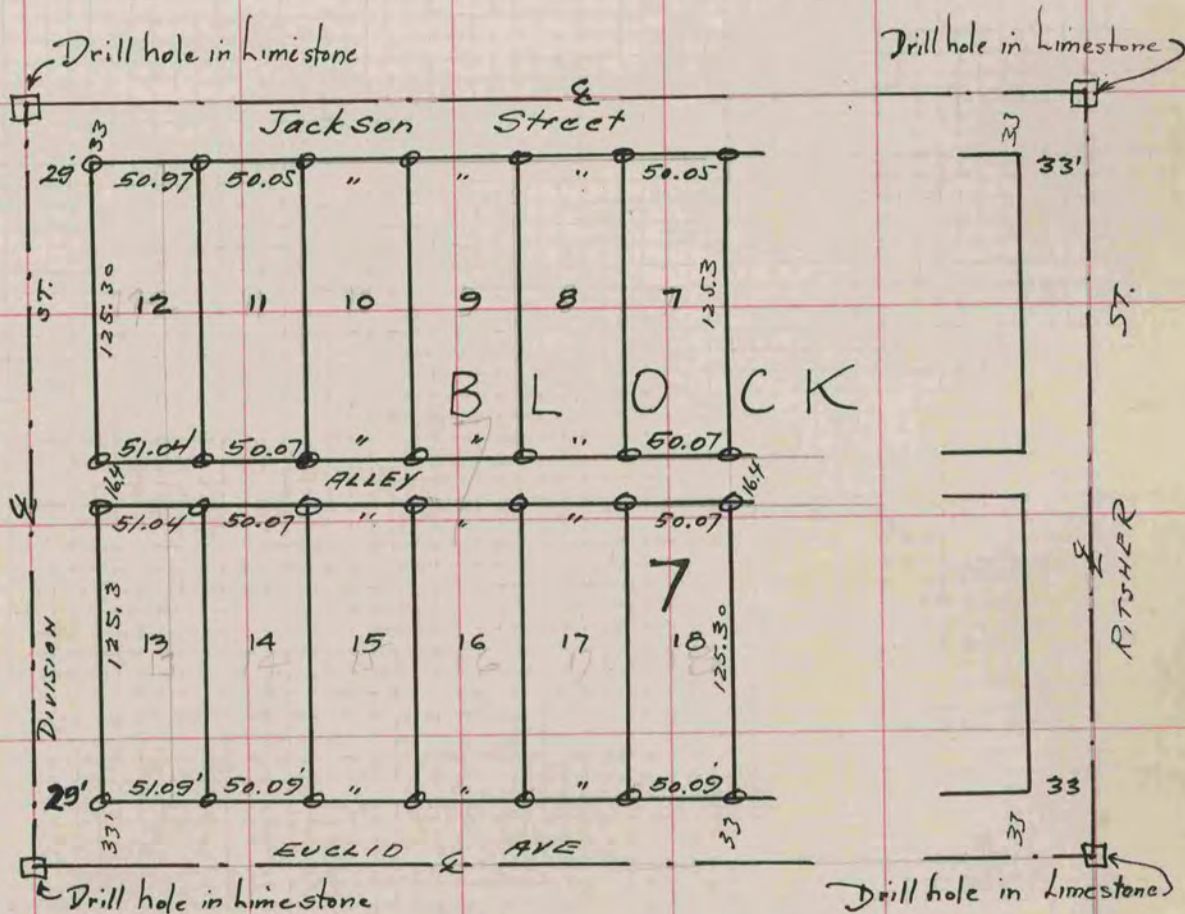
MICROFILMED

COUNTY BUILDING
CITY OF JANESVILLE

R.A. Batterman

County Surveyor.

PART OF BLOCK 7 GRAND AVE Park ADDN.



Note: \odot indicates Gas Pipes at lot corners.

#1799