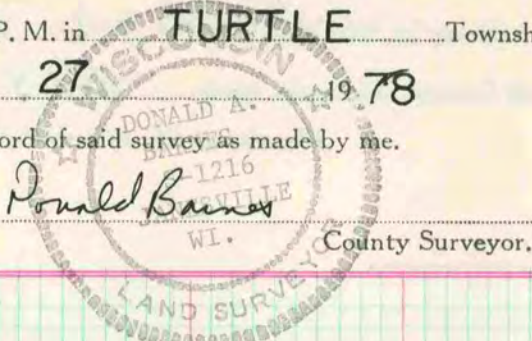


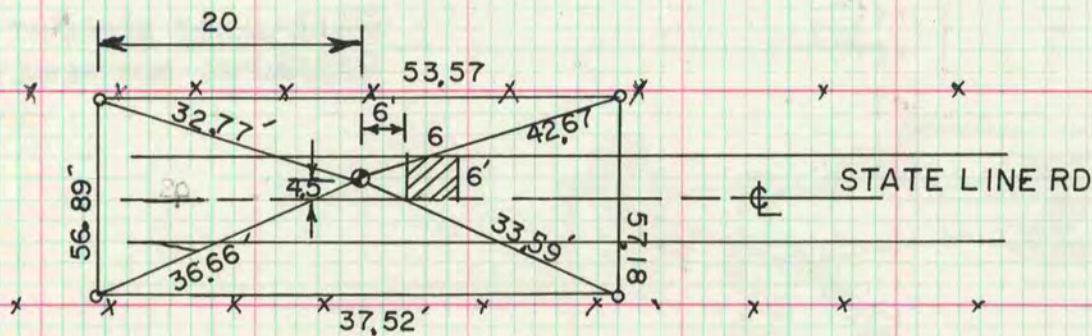
Of a Survey on Section 35, 36 T 1 R 13 E. of the 4 P. M. in TURTLE Township
Rock County, Wisconsin, made JULY the 27 19 78

I hereby certify that the following is a correct record of said survey as made by me.



SW COR SEC 36

SET ALUM. MON. ONLINE WITH S1/4 COR. SEC. 36 & NE COR. SEC. 1
T 46N R 2 E AT SINGLE PROPORTIONATE MEASUREMENT.

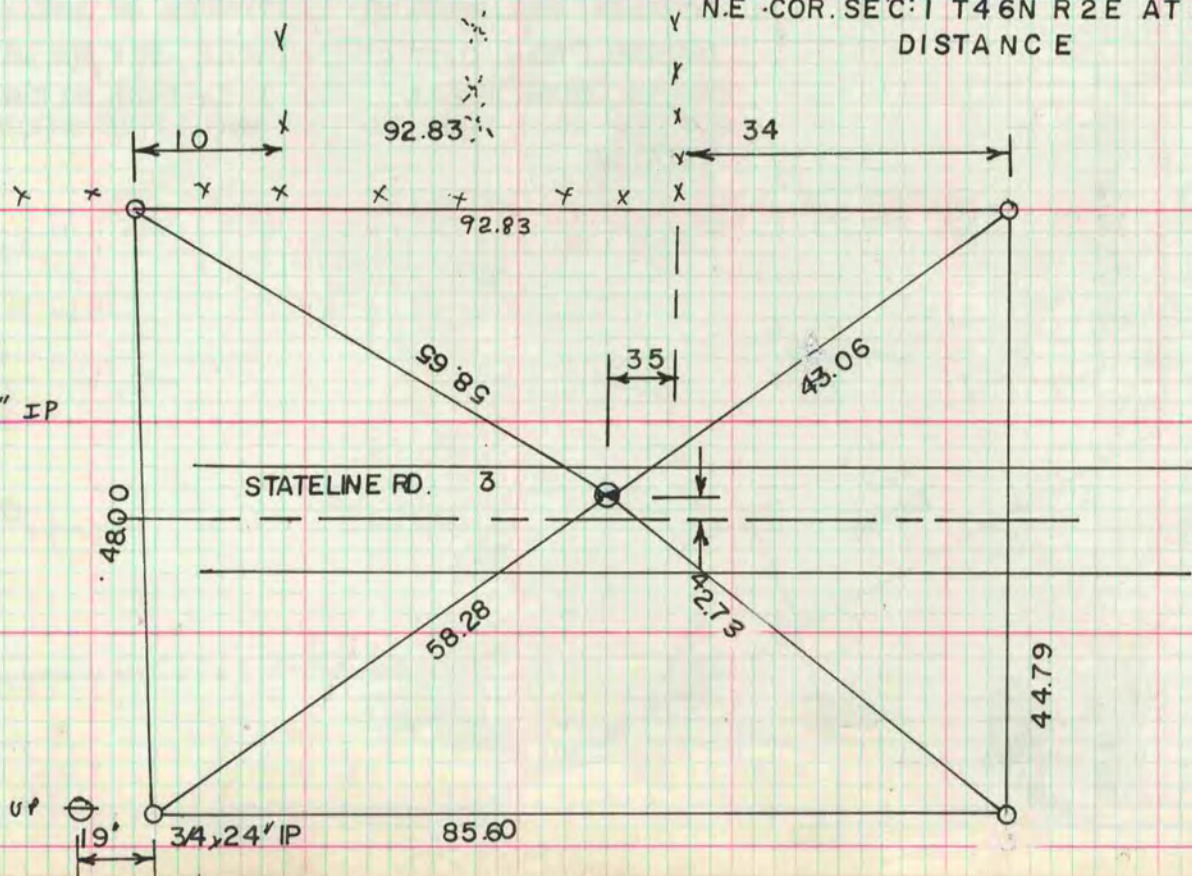


- 3/4" X 24" IP
- ▨ METAL DETECTOR INDICATED A LARGE METAL OBJECT, ONCE THE ASPHALT WAS REMOVED THE ATTRACTION CEASED. 4' DEEP FOUND OLD RD. DUG A TOTAL OF 78' FOUND NOTHING

MICROFILMED

S1/4 COR SEC 35

FORMER COUNTY SURVEYOR DUG & FOUND NOTHING . VOL . 4
PG 85 SET ALUM. MON. ON LINE WITH S1/4 COR. SEC. 36 AND
N.E. COR. SEC. 1 T 46N R 2 E AT SINGLE PROPORTIONATE
DISTANCE



○ 3/4" X 24" IP