

# PLAT AND RECORD

COUNTY BUILDING  
CITY OF JANESVILLE

Of a Survey on Section 28 T 4 R 13 E. of the 4 P. M. in MILTON Township

Rock County, Wisconsin, made OCTOBER the 16th 1961

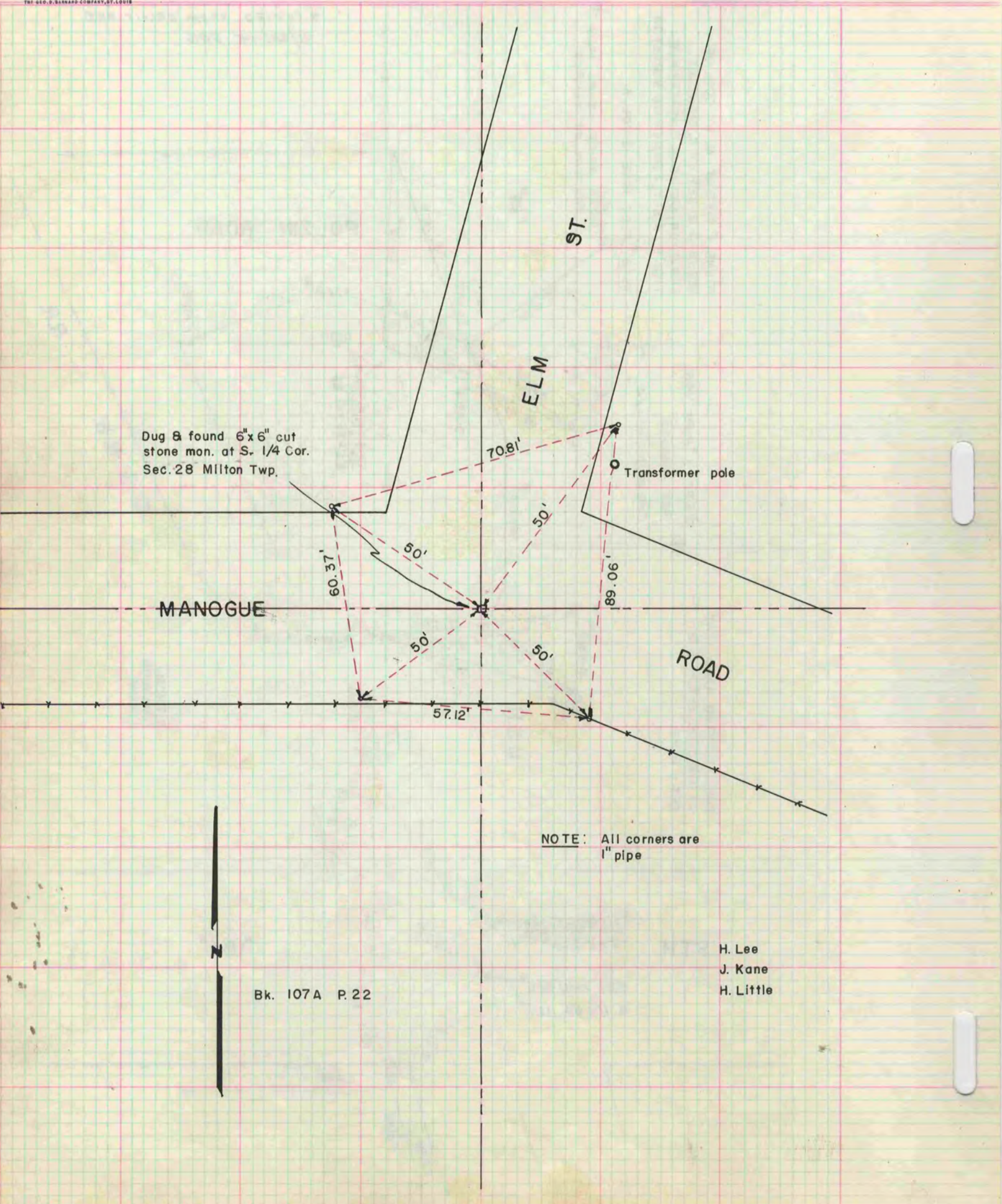
I hereby certify that the following is a correct record of said survey as made by me.

*R. S. Battman Jr.*

County Surveyor.

**MICROFILMED**

THE GEO. S. BARNARD COMPANY, ST. LOUIS



NOTE: All corners are 1" pipe



Bk. 107A P. 22

H. Lee  
J. Kane  
H. Little