

PLAT AND RECORD

COUNTY BUILDING
CITY OF JANESVILLE

Of a Survey on Section 3 T 1 R 11 E. of the 4 P. M. in Newark Township

Rock County, Wisconsin, made August the 16 1976

I hereby certify that the following is a correct record of said survey as made by me.

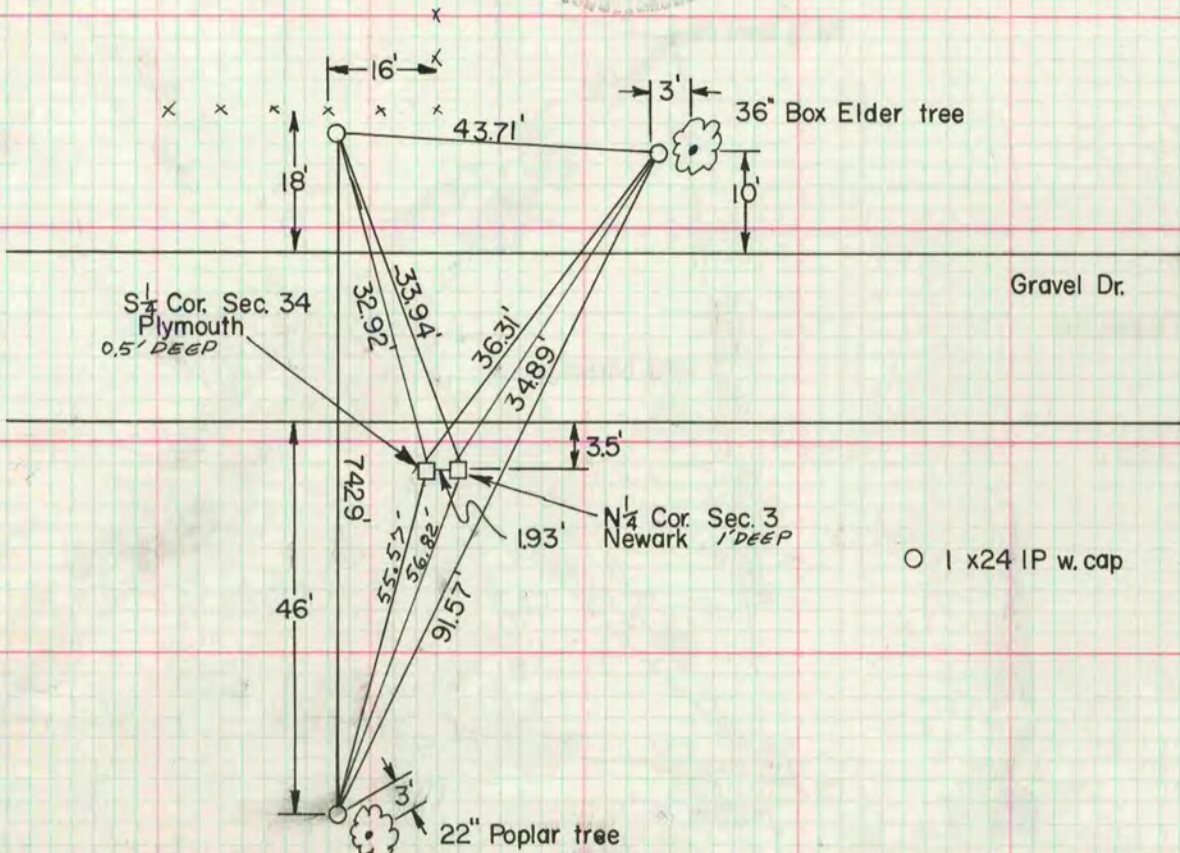
Ronald Barnes

County Surveyor.

MICROFILMED

N¹/₄ Cor. Sec. 3

Found cut stones. S¹/₄ Cor. Sec. 34 Plymouth Twp. was leaning - straightened. Placed 1 1/2 x 24 IP horizontally between Mon.



W¹/₁₆ Cor. of the NE¹/₄ Sec. 3

Fd. 4'x4' cut stone. On E. side fd. 1/4 IP

old TIES vol 3 pg 520

