

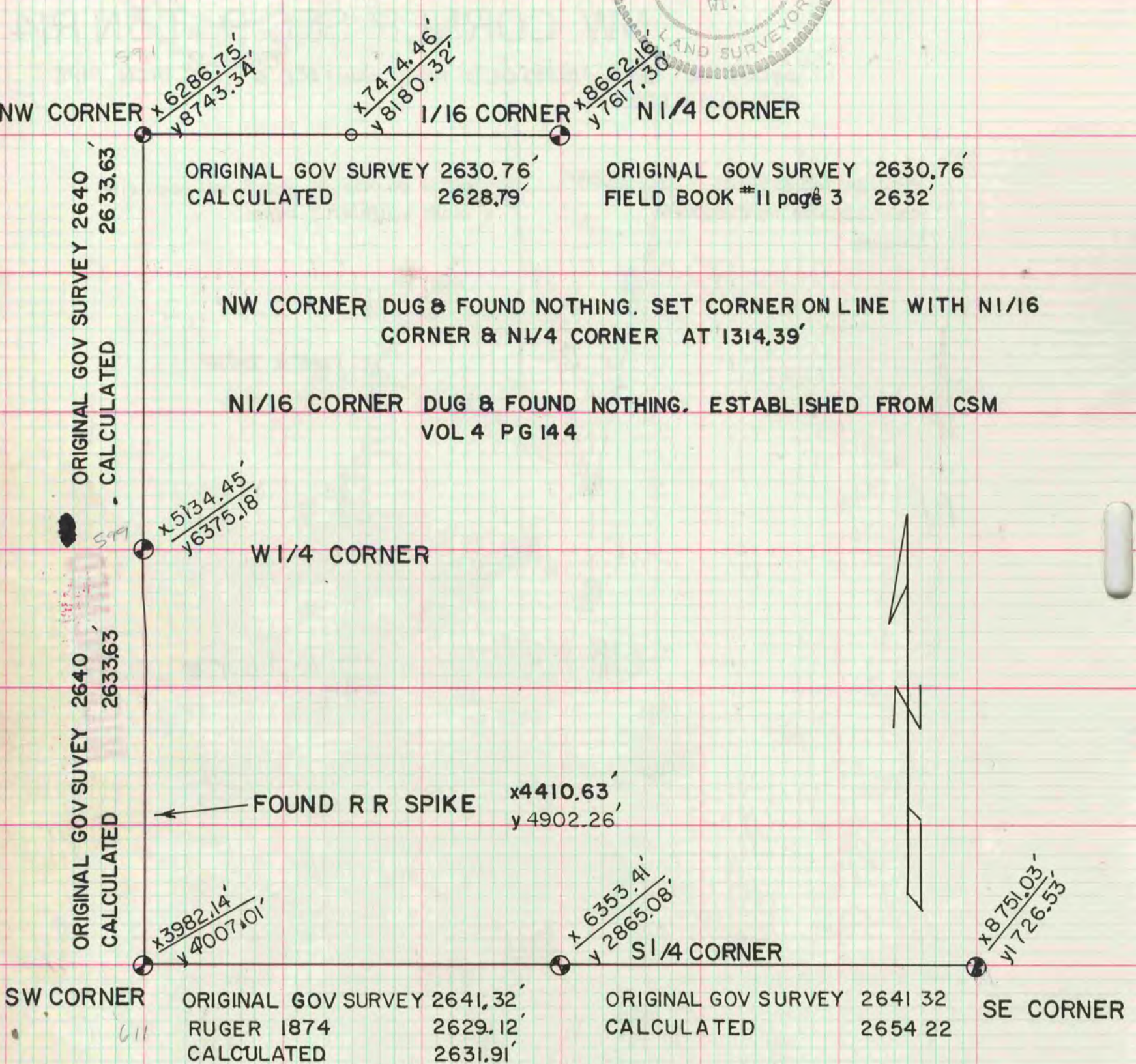
PLAT AND RECORD

Of a Survey on Section **25** T. **4** R. **14** E. of the 4 P. M. in **LIMA** Township

Rock County, Wisconsin, made **APRIL** the **11** 19 **78**

I hereby certify that the following is a correct record of said survey as made by me.

**COUNTY BUILDING
CITY OF JANESVILLE**



ORIGINAL GOV SURVEY 2630.76' CALCULATED 2628.79' ORIGINAL GOV SURVEY 2630.76' FIELD BOOK #11 page 3 2632'

NW CORNER DUG & FOUND NOTHING. SET CORNER ON LINE WITH N1/16 CORNER & N1/4 CORNER AT 1314.39'

N1/16 CORNER DUG & FOUND NOTHING. ESTABLISHED FROM CSM VOL 4 PG 144

W1/4 CORNER

FOUND R R SPIKE x4410.63' y4902.26'

SW CORNER ORIGINAL GOV SURVEY 2641.32' RUGER 1874 2629.12' CALCULATED 2631.91' ORIGINAL GOV SURVEY 2641.32' CALCULATED 2654.22' SE CORNER

CO-ORDINATES ARE BASED ON A LOCAL SYSTEM

MICROFILMED