

U.S. PUBLIC LAND SURVEY MONUMENT RECORD

**For Public Land Survey Corners In:
T. 4 N. - R. 14 E. of the 4th P.M.**

**WI. ADMINISTRATIVE CODE
A-E 7.08 REQUIREMENT**

CORNER CODE INDEX

(PLACE SYMBOL AT THE PLSS CORNER)

| | | | | | | | | | | | | | | | | | | | | | | | | | | | |
|---|---|---|---|---|---|---|---|---|---|---|----|----|----|----|----|----|----|----|----|----|----|----|----|----|----|----|--|
| | A | 1 | 2 | 3 | 4 | 5 | 6 | 7 | 8 | 9 | 10 | 11 | 12 | 13 | 14 | 15 | 16 | 17 | 18 | 19 | 20 | 21 | 22 | 23 | 24 | 25 | |
| A | | 6 | 5 | 4 | 3 | 2 | 1 | | | | | | | | | | | | | | | | | | | | |
| B | | | | | | | | | | | | | | | | | | | | | | | | | | | |
| C | | | | | | | | | | | | | | | | | | | | | | | | | | | |
| D | | | | | | | | | | | | | | | | | | | | | | | | | | | |
| E | | | | | | | | | | | | | | | | | | | | | | | | | | | |
| F | | | | | | | | | | | | | | | | | | | | | | | | | | | |
| G | | | | | | | | | | | | | | | | | | | | | | | | | | | |
| H | | | | | | | | | | | | | | | | | | | | | | | | | | | |
| I | | | | | | | | | | | | | | | | | | | | | | | | | | | |
| J | | | | | | | | | | | | | | | | | | | | | | | | | | | |
| K | | | | | | | | | | | | | | | | | | | | | | | | | | | |
| L | | | | | | | | | | | | | | | | | | | | | | | | | | | |
| M | | | | | | | | | | | | | | | | | | | | | | | | | | | |
| N | | | | | | | | | | | | | | | | | | | | | | | | | | | |
| O | | | | | | | | | | | | | | | | | | | | | | | | | | | |
| P | | | | | | | | | | | | | | | | | | | | | | | | | | | |
| Q | | | | | | | | | | | | | | | | | | | | | | | | | | | |
| R | | | | | | | | | | | | | | | | | | | | | | | | | | | |
| S | | | | | | | | | | | | | | | | | | | | | | | | | | | |
| T | | | | | | | | | | | | | | | | | | | | | | | | | | | |
| U | | | | | | | | | | | | | | | | | | | | | | | | | | | |
| V | | | | | | | | | | | | | | | | | | | | | | | | | | | |
| W | | | | | | | | | | | | | | | | | | | | | | | | | | | |
| X | | | | | | | | | | | | | | | | | | | | | | | | | | | |
| Y | | | | | | | | | | | | | | | | | | | | | | | | | | | |
| Z | | | | | | | | | | | | | | | | | | | | | | | | | | | |

 LIMA Twp.
Rock County, WI.



COORDINATES

GNSS DERIVED VIA WISCORS

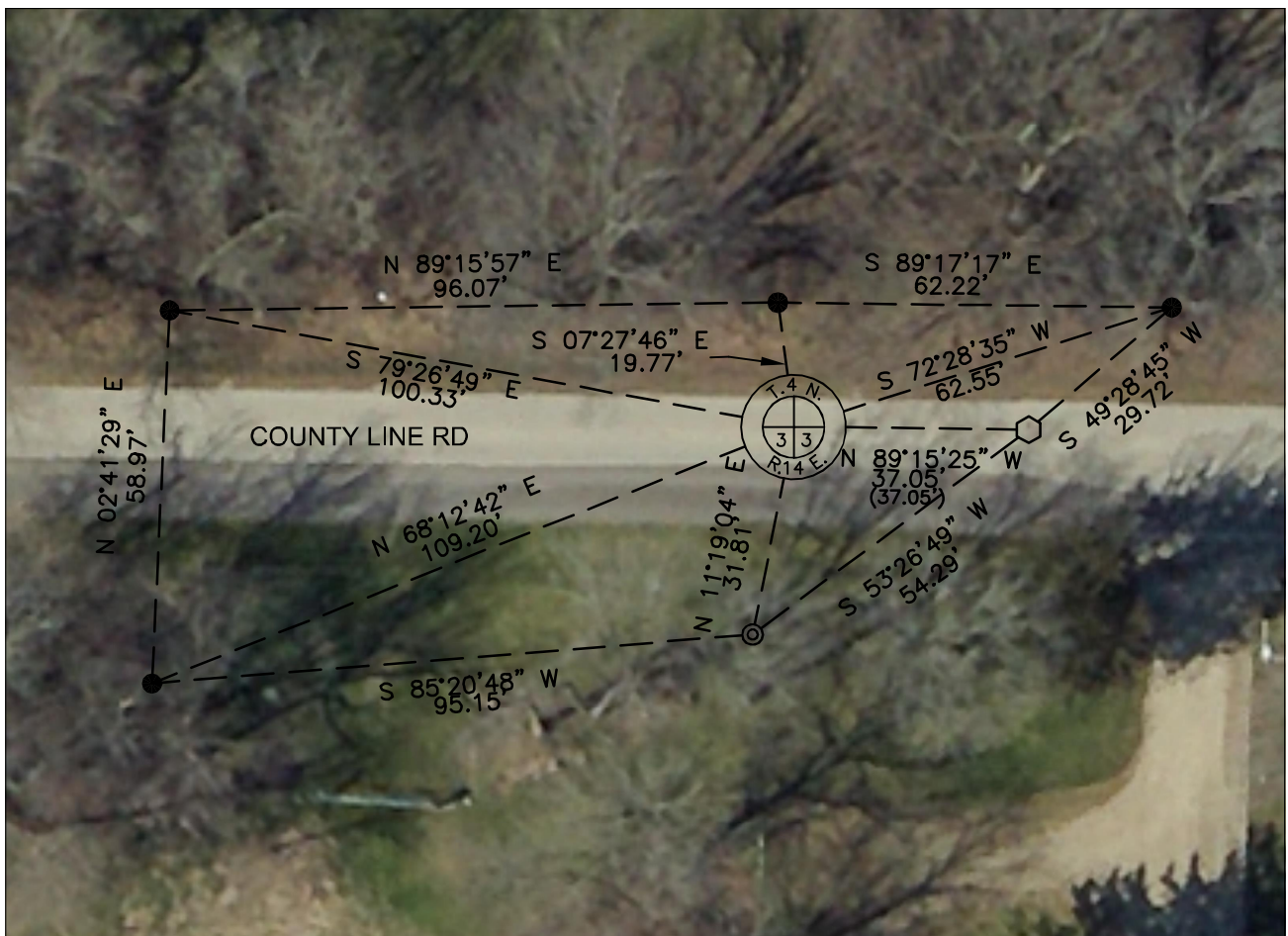
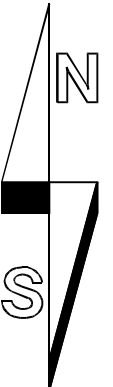
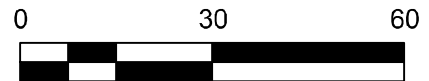
WISCORS, ROCK DATUM, (NA2011)

NORTHING: 327887.35 ELEV: n/a
EASTING: 545905.40

Vertical Datum: NAVD 88, (If applicable)

(a) - Legend

- 3/4" REBAR SET, (BLUE CAP W/"PLSS WITNESS")
- FOUND JEFFERSON ALUMINUM MONUMENT
- FOUND 1" OD IRON PIPE



B) Describe any record evidence, monument evidence, occupational evidence, testimonial evidence or any other material evidence you considered, and whether the monument was found or placed.

I recovered the Jefferson County Monument but the Rock County Monument appears to have been destroyed. I used Barnes' previous measurements from the 1983 Remonumentation map to reestablish the corner's location. I held 37.05' from the Jefferson County Monument and placed it online between the two Jefferson County Section corners. I set a steel survey nail at this location.

C) Was the corner restored through acceptance of (1) an obliterated evidence location, or, (2) a found perpetuated location?

Perpetuated evidence location

D) Describe any material discrepancy between the location of the corner as restored or reestablished and the location of that corner as previously restored or reestablished by distance and direction. Show the discrepancy on the plan view drawing under (a), above. Show the distances between the corner as previously restored or reestablished and (1) the corner as restored or reestablished, and (2) to at least 4 of the witness monuments shown on the drawing in (a), above.

I did not find a discrepancy between the corner restored and a previously documented corner location. *Discrepancy* being defined as *disagreeing* with a corner location, *not* as noting dimensional differences between current/former tie sheets due to measuring methods. The current and *most recent* tie-sheet dimensions filed for the corner are noted.

(E) Was the corner reestablished through lost corner proportionate methods? If so, show the method, including the directions and distances to other public land survey corners used as evidence or used for proportioning the corner location.

N/A

I, **Bradley P. Heuer**, hereby certify that the corner location as identified by the corner code index was determined by me under my direction and control and that this U.S. Public Land Survey Monument Record is correct and complete to the best of my knowledge and belief.

CORNER CODE: A-15
(A.E. 7.08 REQUIREMENT)



PLAT AND RECORD

MICROFILMED

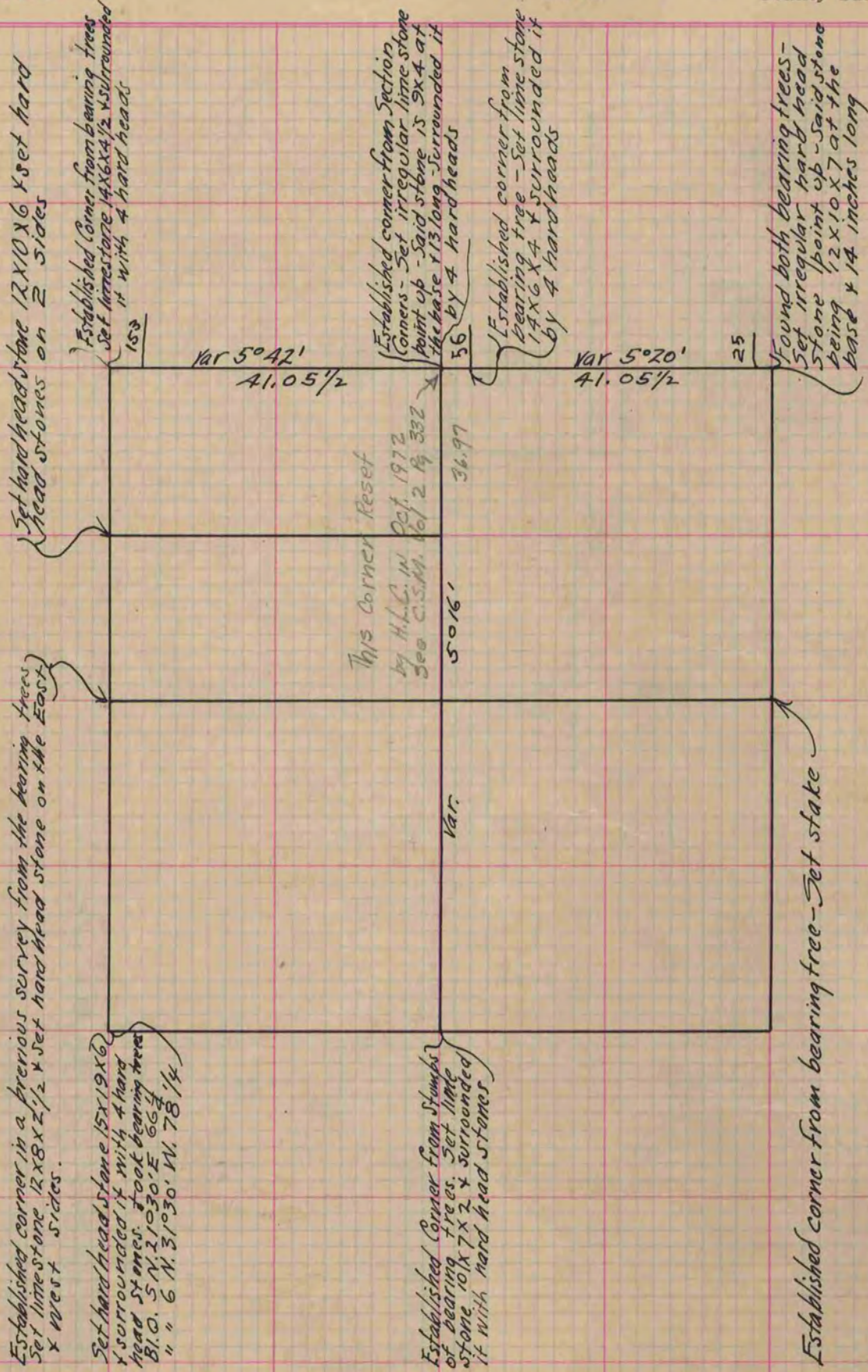
Of a Survey on Section 3 T 4 R 14 E. of the 4 P. M. in Lima Township

Rock County, Wisconsin, made March the 9 10 1870

I hereby certify that the following is a correct record of said survey as made by me.

COUNTY BUILDING
CITY OF JANESVILLE

(Signed) Edward Roger { Deputy
R.H.B. County Surveyor



Copied from Page 17 Vol. 2. Original County Surveyors Record