

# U.S. PUBLIC LAND SURVEY MONUMENT RECORD

For Public Land Survey Corners in:

WI ADMINISTRATIVE CODE A-E 7.08 REQUIREMENT

T. 4 N., R. 14 E

### CORNER CODE INDEX

A	1	2	3	4	5	6	7	8	9	10	11	12	13	14	15	16	17	18	19	20	21	22	23	24	25
B																									
C	6																								
D																									
E																									
F	1																								
G																									
H																									
J																									
K																									
L	18																								
M																									
N																									
O																									
P	19																								
Q																									
R																									
S																									
T	30																								
U																									
V																									
W																									
X	31																								
Y																									
Z																									

LIMA TWP  
ROCK COUNTY WI

IF AVAILABLE  
ROCK COUNTY COORDINATES PREFERRED

North \_\_\_\_\_ Elev. \_\_\_\_\_

East \_\_\_\_\_

Hor. Datum \_\_\_\_\_ Vert. Datum \_\_\_\_\_

LATITUDE \_\_\_\_\_ ELLIPS. HT. \_\_\_\_\_

LONGITUDE \_\_\_\_\_

GPS (X) \_\_\_\_\_ TRAVERSE (X) \_\_\_\_\_

BASED ON THE FOLLOWING CONTROL:

PLACE MONUMENT SYMBOL  AT PROPER LOCATION ON ABOVE INDEX

CORNER MONUMENT

WITNESS MONUMENT

(a)

BEARINGS ARE BASED ON:

FIELD BOOK \_\_\_\_\_ PAGE # \_\_\_\_\_

SHEET 1 OF 3

SHOW A PLAN VIEW DRAWING DEPICTING THE CORNER MONUMENT AND SURROUNDING PHYSICAL FEATURES, INCLUDING THE EXCAVATION AREA AND DEPTH.

PLANNING & ZONING COMMITTEE ADOPTED THE ABOVE FORM ON 12/2/1982

CORNER CODE X-17

LI618

(B) Describe any record evidence, monument evidence, occupational evidence, testimonial evidence or any other material evidence you considered, and whether the monument was found or placed.

1836 BURNHAM JUNE 16 NORTH BETWEEN SECTIONS 34 & 35  
NO STATIONS

2640 SET 1/4 SEC POST BUR O 14 N11-30W 27.72', BUR O  
14 S36-30E 27.06', BUR OAK 1N. DI

5280 SET POST COR TO 26,27,34,35. BUR O 14 S6W  
38.94', W. OAK 14 N70E 99  
FIRST RATE BUR OAK OPENING VAR 6-50 EAST @ SW  
COR SEC 36,

19?? LEE VOL 5 PG 485 INFORMATION SUPPLIED BY H. LEE SEE B1  
FILES. ORDER #12063 CALLS FOR E 1/4 COR SEC 34 ON LINE  
WITH NE & SE CORNERS SEC 34 AT 26343.886 FROM SE & NE  
CORNERS OF SEC 34, 5305.93 TO W 1/4 COR SEC 34, 2651.56  
TO CEN. SEC 34, ANGLE 92-56-07 @ NE COR SEC 34 FROM E  
1/4 COR SEC 34 TO N 1/4 COR SEC 34, ANGLE

19?? LEE VOL 5 PG 485 INFORMATION SUPPLIED BY H. LEE SEE B-1  
FILES. 2643.886 TO NE COR SEC 34 & SE COR SEC 34,  
2651.56 TO CEN SEC 34, 5305.93 TO W 1/4 COR SEC 34,  
ANGLE 180-00-00 @ E 1/4 COR SEC 34 FROM NE TO SE  
CORNERS SEC 34.

1978 BARNES VOL 5 PG 485 & 510 SHOWS KARN'S RECORD  
DISTANCES AND ANGLES. FENCE INT. TO SW COR SEC 35 IS  
2641.16 & 2646.24 TO NW COR SEC 35, FENCE INT. IS 2.4  
SOUTH & 2.3 EAST OF A POINT MID POINT & ON LINE  
BETWEEN THE NW & SW CORNERS OF SEC 35.

1978 BARNES VOL 5 PG 512 SET ALUM. MON. MIDWAY BETWEEN &  
ON LINE WITH THE NW & SW CORNERS SEC 35. USED  
TRAVERSE AS ESTABLISHED BY KARNS, SEE PG 510. 2  
SOUTH & 2 WEST OF FENCE INT.

1978 BARNES FIELD BOOK #1 PG 61 ANGLE & DISTANCE TO MON  
FROM KARNS TRAVERSE.

FD ALUM. MON. & CARSONITE POST. MIRITZ REPORTED THE ALUM.  
MON. DID NOT AGREE WITH DISTANCES AND ANGLE TO NE & SE  
CORNERS SEC 34. USED HIS TRAVERSE POINT FOR TRAVERSE  
POINTS AND RE-OBSERVED ANGLE AND DISTANCES, WHICH  
SUPPORTED HIS STATEMENT. PLACED POLY. MON. MIDWAY & ON  
LINE WITH NE & SE CORNERS SEC 34. THIS IS IN HARMONY WITH  
LEE'S ESTABLISHMENT OF THE CORNER.

C) Was the corner restored through acceptance of (1) an obliterated evidence location, or, (2) a found  
perpetuated location?

NO

D) Describe any material discrepancy between the location of the corner as restored or reestablished and the  
location of that corner as previously restored or reestablished by distance and direction. Show the discrepancy on  
the plan view drawing under (a), above. Show the distances between the corner as previously restored or  
reestablished and (1) the corner as restored or reestablished, and (2) to at least 4 of the witness monuments shown  
on the drawing in (a), above.


YES, AS SHOWN.

(E) Was the corner reestablished through lost corner proportionate methods? If so, show the method, including the  
directions and distances to other public land survey corners used as evidence or used for proportioning the corner  
location.

LEE REESTABLISHED CORNER BY LOST CORNER PROPORTIONATE  
METHOD.

I, Donald Barnes, hereby certify that the corner location as identified by the corner code index was determined by  
me under my direction and control and that this U.S. Public Land Survey Monument Record is correct and complete  
to the best of my knowledge and belief.

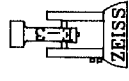
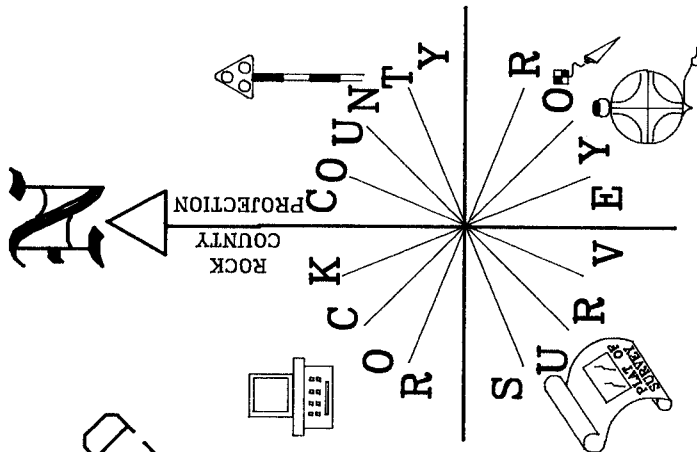
Seal

  
Sep 16 2003

SHEET 1 OF 3

CORNER CODE X-17

A.E. 7.08 REQUIREMENT



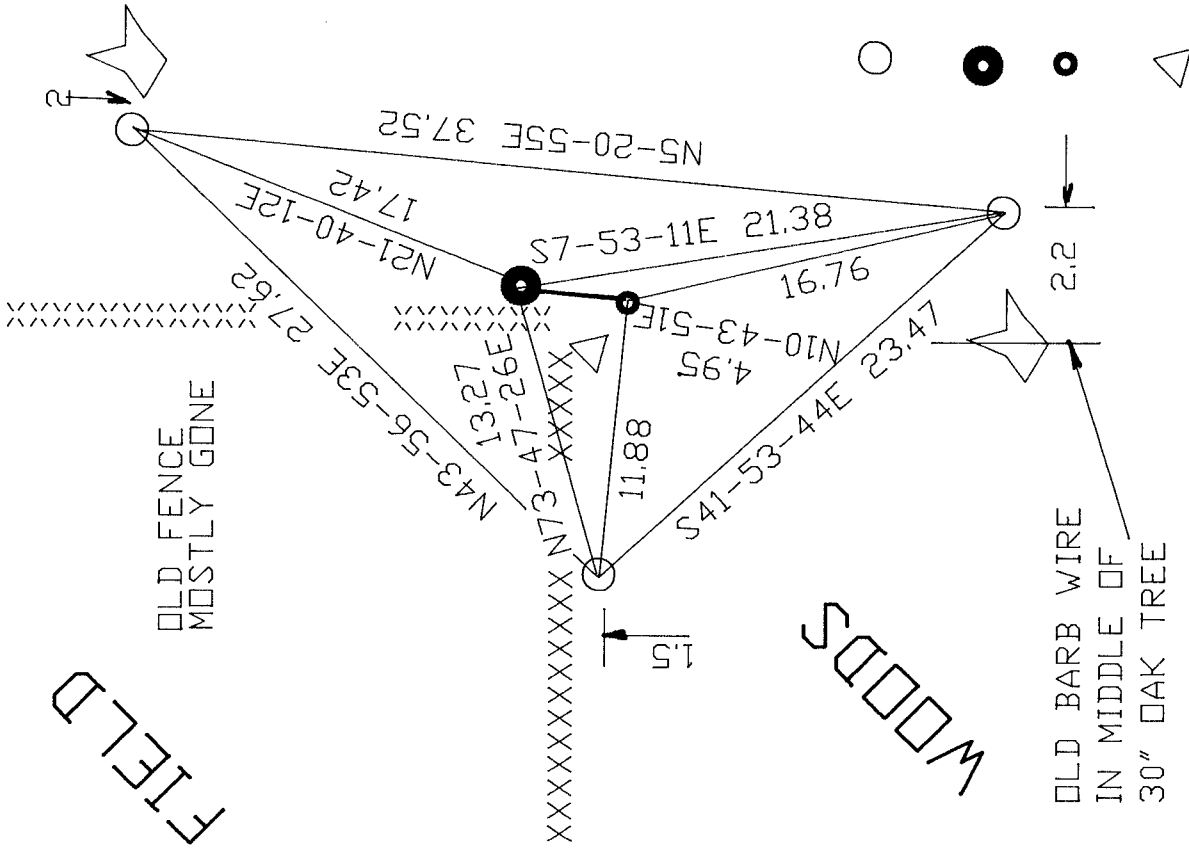
NOT TO SCALE

OBSERVATION SHEET #1618

FIELD

W 1/4 COR  
SEC 35  
LIMA TWP  
T4N R14E

WOODS



3/4X24" REROD  
/YELLOW PLASTIC CAP

POLY MON  
W 1/4 COR

OLD ALUM. MON.  
WITH TOP OFF

CARSONITE POST

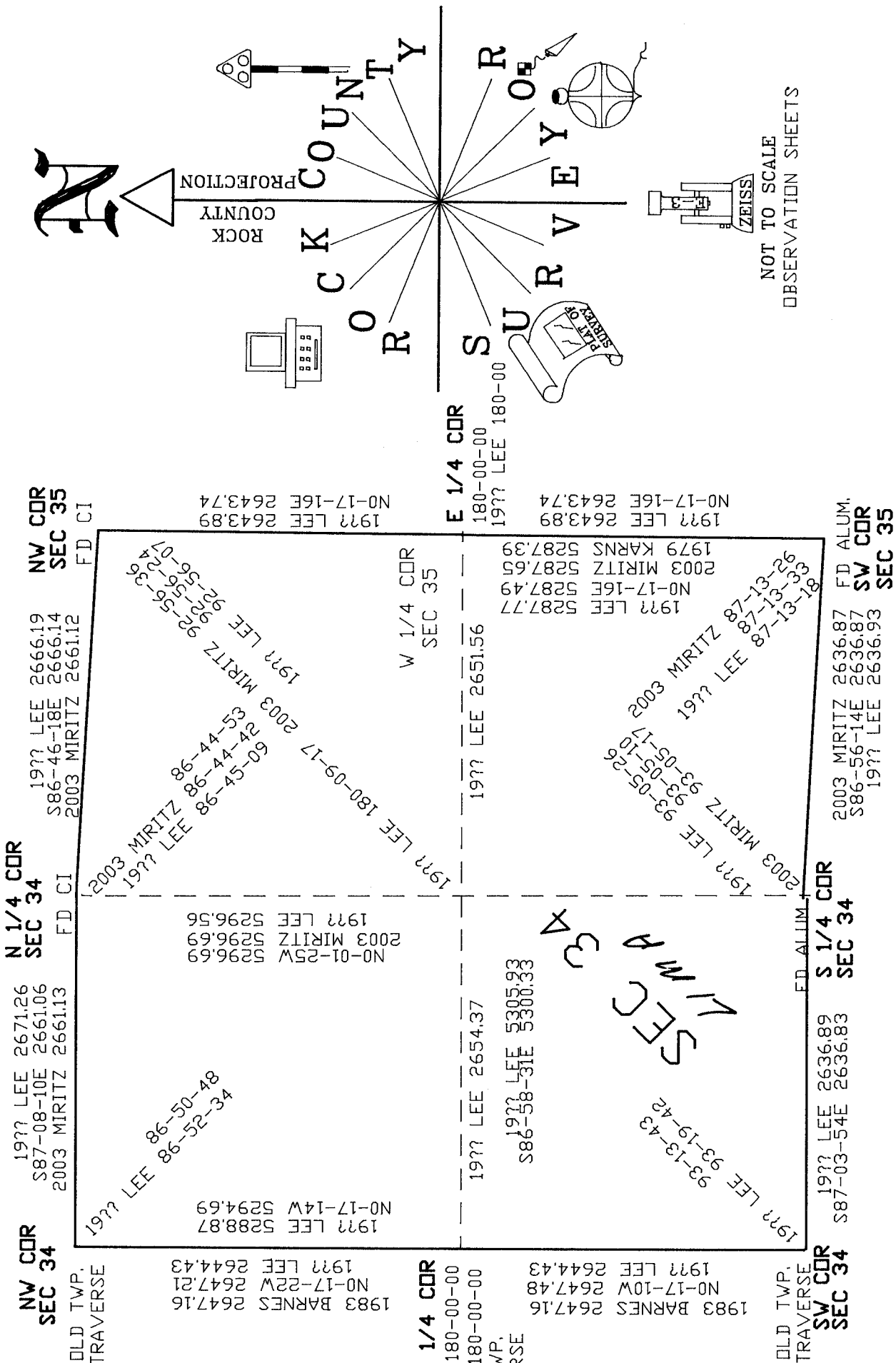


2 OF 3

*Donald Barnes*  
EMBOSSSED SEAL

Sep 16 2003

X-17



NOT TO SCALE  
 OBSERVATION SHEETS

EMBOSSED SEAL  
*Donald Barnes*  
 Sep 16, 2003

SHEET 3 OF 3

X-17