

U.S. PUBLIC LAND SURVEY MONUMENT RECORD

For Public Land Survey Corners In:
T. 4 N. R. 14 E. 4th P.M.
CORNER CODE INDEX

WI ADMINISTRATIVE CODE A-E 7.08 REQUIREMENT
REV 10/23/2004 USMONREC.DWG

LIMA TWP

ROCK COUNTY WI

IF AVAILABLE
ROCK COUNTY COORDINATES PREFERRED

A	1	2	3	4	5	6	7	8	9	10	11	12	13	14	15	16	17	18	19	20	21	22	23	24	25	A
B																										B
C																										C
D																										D
E																										E
F																										F
G																										G
H																										H
J																										J
K																										K
L																										L
M																										M
N																										N
O																										O
P																										P
Q																										Q
R																										R
S																										S
T																										T
U																										U
V																										V
W																										W
X																										X
Y																										Y
Z																										Z

North _____ Elev. _____

East _____

Hor. Datum _____ Vert. Datum _____

LATITUDE _____ ELLIPS. HT. _____

LONGITUDE _____

NAD83(91) _____ NETWORK ADJ. YR _____

GPS (X) _____ TRAVERSE (X) _____

BASED ON THE FOLLOWING CONTROL:

PLACE MONUMENT SYMBOL AT PROPER LOCATION ON ABOVE INDEX

CORNER MONUMENT

WITNESS MONUMENT

(a)

BEARINGS ARE BASED ON: _____

FIELD BOOK _____ PAGE # _____

SHEET 1 OF 3

SHOW A PLAN VIEW DRAWING DEPICTING THE CORNER MONUMENT AND SURROUNDING PHYSICAL FEATURES, INCLUDING THE EXCAVATION AREA AND DEPTH.

PLANNING & ZONING COMMITTEE ADOPTED THIS FORM ON 12/2/1982

CORNER CODE P-13

LI577

(B) Describe any record evidence, monument evidence, occupational evidence, testimonial evidence or any other material evidence you considered, and whether the monument was found or placed.

- 1836 BURNHAM (JUNE) NORTH BETWEEN SECTIONS 21 & 22
2310 LEAVE WET PRAIRIE
2640 SET 1/4 SEC POST BUR OAK 12 S57E 20.46'; BUR OAK
12 N28W 27.72'
5280 SET POST COR TO 15,16,21 & 22.
- 1859 RUGER VOL 1 PG 104 BURR OAK 18 S0-20E 56.76' VAR 6-20,
SURROUNDED POST BY 3 HH S OF POST 3 HARDHEADS.
USED TO SUBDIVIDE SEC 22. E/W 1/4 LINE VAR 4-06 2665.08
FROM CEN TO E 1/4 COR SEC 22.
- 1866 LOCKE VOL 1 PG 263 FD COR SET BY RUGER (P113) (104 THIS
BOOK) 2645.94 TO SW COR SEC 22, 2685.54 TO CEN SEC 22.
@ CEN FD COR SET BY RUGER (P113)(104 THIS BOOK)
- 1871 RUGER VOL 2 PG 56 FD COR ESTABLISHED BY SELF IN A
FORMER SURVEY- STAKE SURROUNDED BY 3 HEAD STONES.
2683.56' TO CEN SEC 22, & @ CEN SEC 22 FD COR
ESTABLISHED BY SELF, STAKE SURROUNDED BY 3 HH.
- 1872 LEE VOL 2 PG 91 VAR 4-13 2699.73 FROM E 1/4 COR SEC 21
TO CEN SEC 21, 689.86 WEST ALONG E/W 1/4 LINE TO SET BL.
STAKE WITH HH ON N&S., NORTHERLY VAR 5-14 1324.62
FROM SE COR SEC 21 TO 1/16TH COR. 2643.46 VAR 4 FROM
CEN SEC 21 TO S 1/4 COR SEC 21. STATES NOTHING ABOUT E
1/4 COR SEC 21.
- 1872 LEE VOL 2 PG 92 FD COR SET BY RUGER & FD COR SET BY
RUGER @ CEN SEC 22, 2686.86 TO CEN SEC 22, VAR 4-25
2643.96 TO NW COR SEC 22, & SOUTH 1339.8 TO 1/16TH COR.
- 1896 BROWN VOL 2 PG 499 FD RUGER'S COR EAST ALONG E/W 1/4
LINE 1342.60 TO 1/16TH COR. SET HH 22X12X4 @ 1/16TH COR.
USED RUGER'S CEN @ SEC 22
- 1937 SUNNY VOL 3 PG 367 @ CEN SEC 22 FD HH 3' W OF CENTER
OF RD. SET 1 1/2X18 PIPE WITH CAP ON TOP & REF. SAME.
- 1950 SUNNY #2645 @ CEN 22 IRON PIPE OVER STONE
- 1951 SUNNY #2641 IRON PIPE OVER STONE MON @ CEN 22
- 1958 GARRITZ #2644 2630.13 FROM CEN 22 TO S 1/4 COR SEC 22.
- 19?? #2649 2630.06 FROM CEN 22 TO S 1/4 COR SEC 22.
- 1961 BATTERMAN VOL 4 PG 119 @ CEN SEC 22 FD 1 1/4" PIPE & REF
SAME.
- 1975 COMBS # ANGLE 88-35-00 @ CEN SEC 22 FROM E 1/4 COR TO
S 1/4 COR SEC 22, ANGLE 90-46-40 @ S 1/4 COR SEC 22 FROM
CEN SEC 22 TO SE COR SEC 22.
- 1980 BARNES VOL 6 PG 66 @ CEN SEC 2 FD 1 1/4" PIPE & HH SET
ALUM MON. & REF SAME.
- 1983 BARNES REMON. CEN SEC 22 IS 11.21' OFF LINE BETWEEN N
1/4 COR & S 1/4 COR SEC 22, CEN SEC 22 IS 10.77' OFF LINE
BETWEEN E 1/4 & W 1/4 CORNERS SEC 22. ANGLE 89-04-51 @
CEN SEC 22 FROM E 1/4 COR SEC 22 TO S 1/4 COR SEC 22,
ANGLE 90-46-07 @ S 1/4 COR SEC 22 FROM CEN 22 TO SE COR
SEC 22 2630.2 FROM CEN 22 TO S 1/4 COR SEC 22, 2657.36
FROM CEN 22 TO N 1/4 COR SEC 22, 2672.22 FROM CEN SEC
22 TO E 1/4 COR SEC 22.
- 1981 COMBS #12973 @ CEN 22 FD ALUM. 2630.66 TO S 1/4 COR
SEC 22
- 1988 KUPSCH #12997 & 12698 @ CEN OF SW 1/4 OF SEC 22 FD 1"
IP.
- 1995 LANGONE #9351 2630.27 FROM CEN 22 TO S 1/4 COR SEC 22,
2696.62 FROM S 1/4 COR SEC 22 TO SE COR SEC 22, & ANGLE
90-46-39 @ S 1/4 COR SEC 22 FROM CEN 22 TO SE COR SEC
22.
- 1997 LANGONE #8811 2639.2 FROM CEN 22 TO S 1/4 COR SEC 22.
- 1997 LANGONE #8804 2672.50 FROM CEN 22 TO E 1/4 COR SEC 22

DUG & FD OLD E/W FENCE LINE & FENCE INT. POST. THIS IS IN
HARMONY WITH RECORD DISTANCES. ACCEPTED SAME & PLACED
POLY. MON. WITH CARSONITE POST.

SHEET 1 OF ~~2~~ 34
CORNER CODE P-13

David Barnes
April 21 2005

LI577

C) Was the corner restored through acceptance of (1) an obliterated evidence location, or, (2) a found perpetuated location?

CORNER RESTORED THROUGH ACCEPTANCE OF OBLITERATED EVIDENCE LOCATION.

D) Describe any material discrepancy between the location of the corner as restored or reestablished and the location of that corner as previously restored or reestablished by distance and direction. Show the discrepancy on the plan view drawing under (a), above. Show the distances between the corner as previously restored or reestablished and (1) the corner as restored or reestablished, and (2) to at least 4 of the witness monuments shown on the drawing in (a), above.

NONE

(E) Was the corner reestablished through lost corner proportionate methods? If so, show the method, including the directions and distances to other public land survey corners used as evidence or used for proportioning the corner location.

NO

I, **Donald Barnes**, hereby certify that the corner location as identified by the corner code index was determined by me under my direction and control and that this U.S. Public Land Survey Monument Record is correct and complete to the best of my knowledge and belief.

Seal

Donald Barnes

Emboss

APR 21 2005

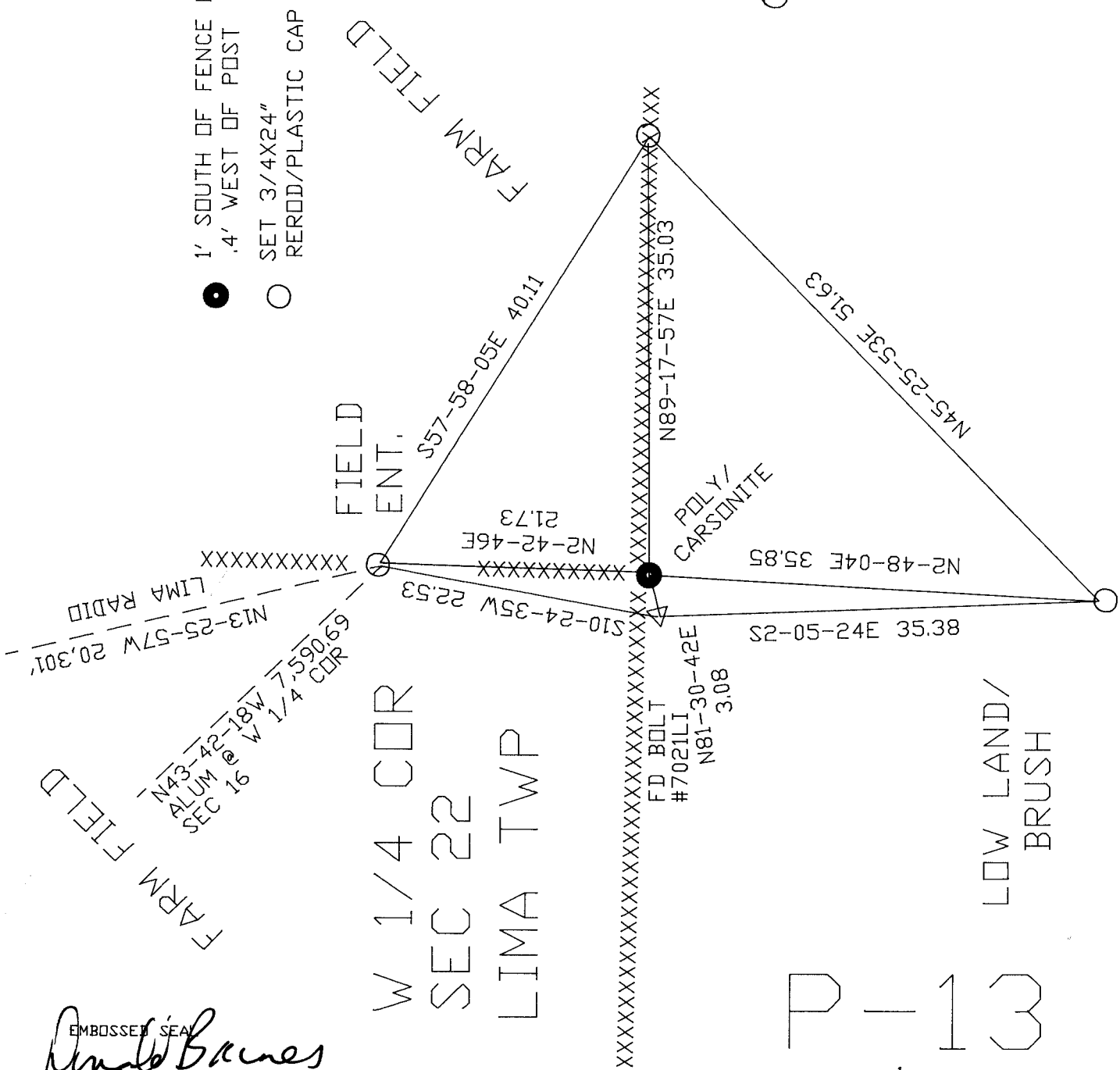
SHEET 2 OF *49*

CORNER CODE

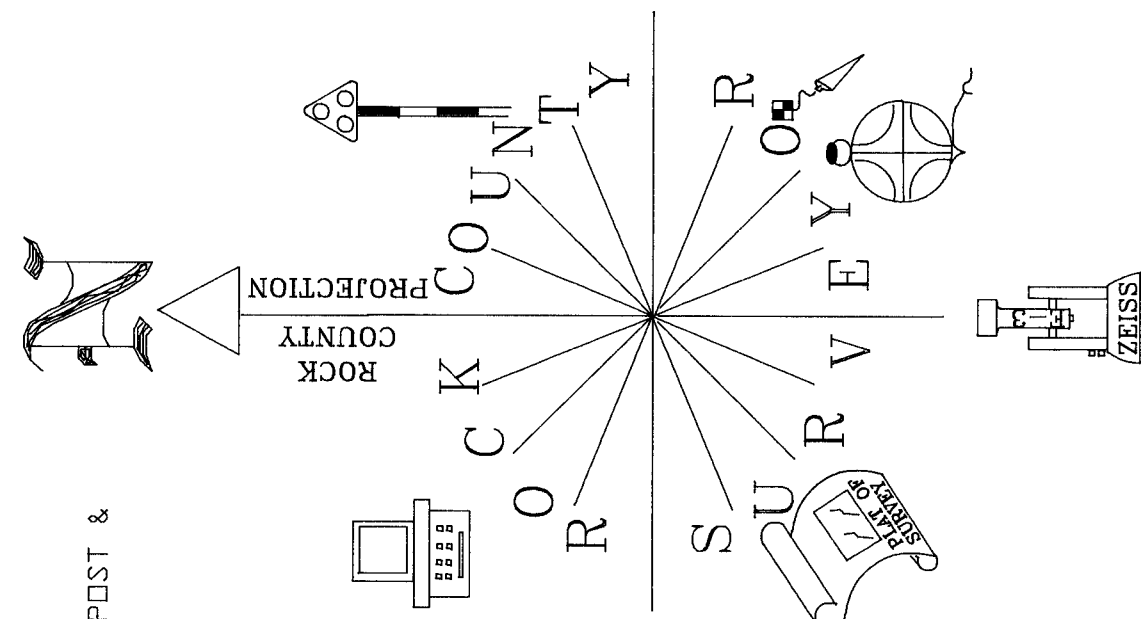
P-13

A.E. 7.08 REQUIREMENT

EMBOSSER SEAL
Ronald Barnes
 April 21 2005



- 1' SOUTH OF FENCE POST & .4' WEST OF POST
- SET 3/4X24" REROD/PLASTIC CAP



NOT TO SCALE

W 1/4 COR
 SEC 22
 LIMA TWP

P-13

3 OF 4

