

# U.S. PUBLIC LAND SURVEY MONUMENT RECORD

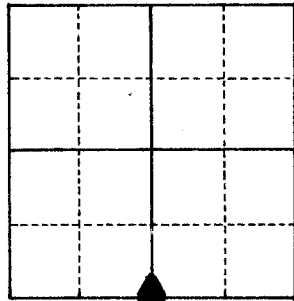
For Public Land Survey Corners in the  
T. 4 N., R. 14 E. LIMA TWP.

For Miscellaneous Corners within Sec.  
7, T. 4 N., R. 14 E.

LIMA

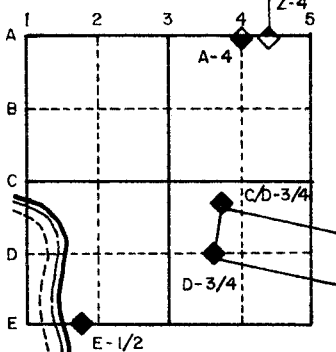
## CORNER CODE INDEX

	1	2	3	4	5	6	7	8	9	10	11	12	13	14	15	16	17	18	19	20	21	22	23	24	25
A																									
B																									
C	6																								
D		5																							
E			4																						
F				3																					
G					2																				
H																									
I	7																								
J		8																							
K			9																						
L				10																					
M					11																				
N						12																			
O							13																		
P								14																	
Q									15																
R										16															
S											17														
T												18													
U													19												
V														20											
W															21										
X																22									
Y																	23								
Z																		24							



1. Above code numbers are positioned Meander, Claim, or Fractional corners of the section.
2. Township corner code numbers shall be applied to the corners of above typical section.

### EXAMPLE



PLACE MONUMENT SYMBOL (◆) AT PROPER LOCATION ON ABOVE INDEX

IF AVAILABLE  
STATE PLANE COORDINATES

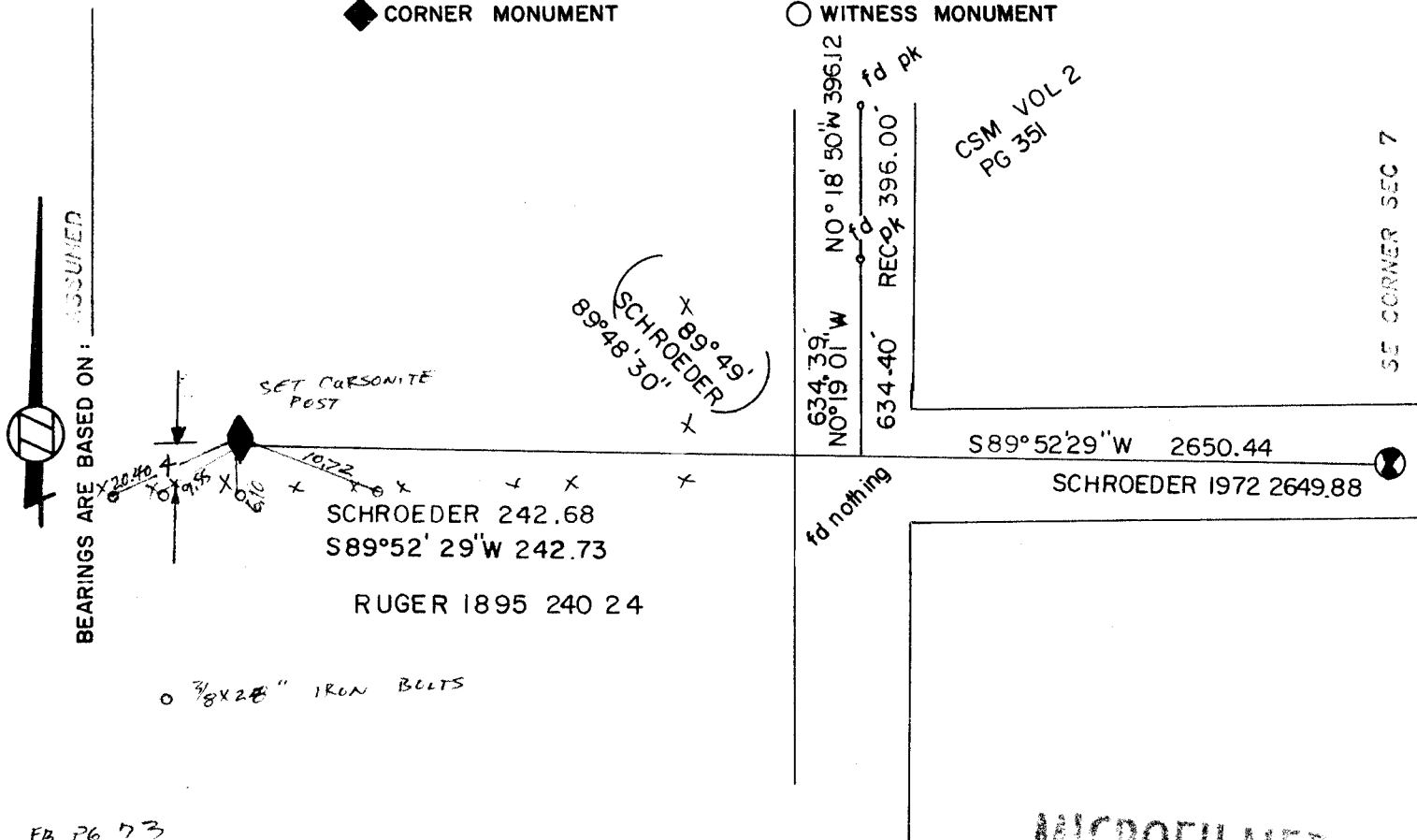
North (Y) 299,235.83 Eleve. (Z) 874

East (X) 2,298,732.81 Zone SOUTH

Hor. Datum \_\_\_\_\_ Vert. Datum \_\_\_\_\_

◆ CORNER MONUMENT

○ WITNESS MONUMENT



FB P6 73

SHOW A PLAN VIEW DRAWING DEPICTING THE CORNER MONUMENT AND SURROUNDING PHYSICAL FEATURES, INCLUDING THE EXCAVATION AREA AND DEPTH. THE CORNER MONUMENT SHALL HAVE THE FOLLOWING CHARACTERISTICS: 1) HAVE AT LEAST TWO PREDETERMINED BREAK-OFF POINTS. 2) IF BROKEN, LEAVE A PERMANENTLY MAGNETIZED REMNANT AT THE ORIGINAL POINT. 3) MUST BE EXTENDABLE. 4) THE CAP IS INSCRIBED: ROCK COUNTY SURVEY MONUMENT - PENALTY FOR DISTURBING MARKER. 5) OR AN EXISTING CUT LIMESTONE. AN IRON PIPE 1 1/2" x 4'0" (MINIMUM) WITH AT LEAST 4 DURABLE WITNESS MONUMENTS MAY BE USED IN AREAS WHERE GROUND WATER IS WITHIN 1.0' OF THE SURFACE. IF THE CORNER IS OCCUPIED BY AN IMPROVEMENT (MANHOLE, BURIED CABLE, ETC.), ANY DURABLE, DISTINCT MONUMENT MAY BE USED AND REFERENCED WITH AT LEAST 4 DURABLE WITNESS MONUMENTS.

CORNER CODE : **J 3**

- Describe any record evidence, monument evidence, occupational evidence, testimonial evidence or any other material evidence you considered and whether the monument was found or set.

fd 1"X24" IP HORIZONTALLY & 0.1' DEEP. SET POLY MON USING CALL DISTANCES  
AND BEARING FROM GSN VOL 2 PAGE 251. I PROJECTED THE FOUND PK NAILS SOUTH  
THE RECORD DISTANCE. THIS WAS IN HARMONY WITH THE RECORD DISTANCE TO THE  
SE CORNER OF SECTION 7 AND THE RECORD ANGLE AT THE INTERSECTION POINT. THE  
51/4 CORNER WAS SET ON LINE WITH THE SE CORNER OF SECTION 6 AND THE ABOVE  
INTERSECTION POINT AND AT PROPORTIONATE DISTANCE. THE IRON PIPE WAS AT THIS  
LOCATION.

- Describe any material discrepancy between the location of the corner as restored or re-established and the location of that corner as previously restored or re-established.

\_\_\_\_\_  
 \_\_\_\_\_  
 \_\_\_\_\_  
 \_\_\_\_\_

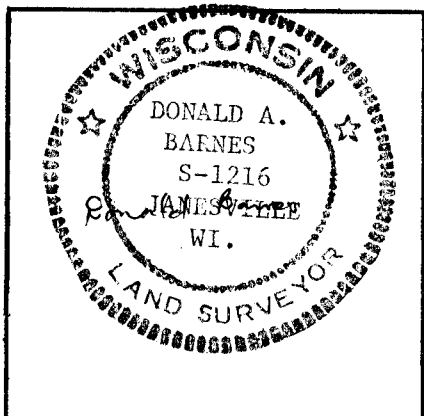
- Was the corner restored through acceptance of an obliterated evidence location or a found perpetuated location.

\_\_\_\_\_  
 \_\_\_\_\_  
 \_\_\_\_\_  
 \_\_\_\_\_

- Was the corner re-established through lost corner proportionate methods? If so, show the method, including directions and distances to other public land survey corners used as evidence or used for proportioning in determination of the corner location.

\_\_\_\_\_

I, DONALD BARNES, hereby certify that the corner points as identified by the corner code index were, in a field survey on SEP 3, 1982, established, re-established, monumented, re-monumented, recovered or restored as expressed below and in conformance with the regulations and rules as required in the current manual of survey instructions of the United States Department of Interior, Bureau of Land Management.



COUNTY SURVEYOR FILING DATA  
 Date of Computer Entry \_\_\_\_\_  
 Date Received \_\_\_\_\_  
 Date Microfilmed 10/15/1984  
 Treasurer's Receipt No. \_\_\_\_\_  
 Number of Included Sheets \_\_\_\_\_

AFFIX YOUR LAND SURVEYOR SEAL. **J3**