

U. S. PUBLIC LAND SURVEY MONUMENT RECORD

For Public Land Survey Corners in

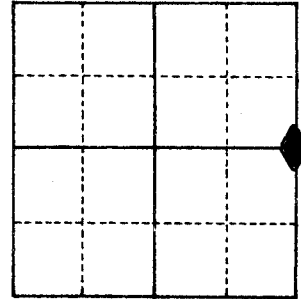
LIMA TWP. T. 4 N., R. 14 E.

For Miscellaneous Corners within

Sec. 25, T. 4 N., R. 14 E.

CORNER CODE INDEX

	1	2	3	4	5	6	7	8	9	10	11	12	13	14	15	16	17	18	19	20	21	22	23	24	25
A																									
B																									
C	6																								
D		5																							
E			4																						
F				3																					
G					2																				
H																									
J																									
K																									
L	18																								
M		17																							
N			16																						
O				15																					
P					14																				
Q						13																			
R																									
S																									
T																									
U	19																								
V		20																							
W			21																						
X				22																					
Y					23																				
Z						24																			
							25																		
								26																	
									27																
										28															
											29														
												30													
													31												
														32											
															33										
																34									
																	35								
																		36							



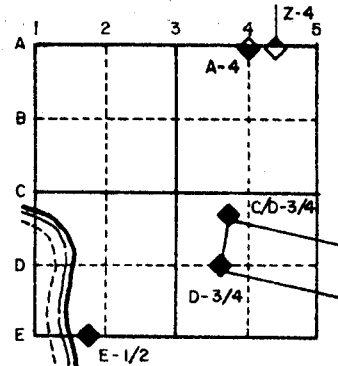
1. Above code numbers are positioned Meander, Claim, or Fractional corners of the section.
2. Township corner code numbers shall be applied to the corners of above typical section.

PLACE MONUMENT SYMBOL (◆) AT PROPER LOCATION ON ABOVE INDEX

IF AVAILABLE
STATE PLANE COORDINATES

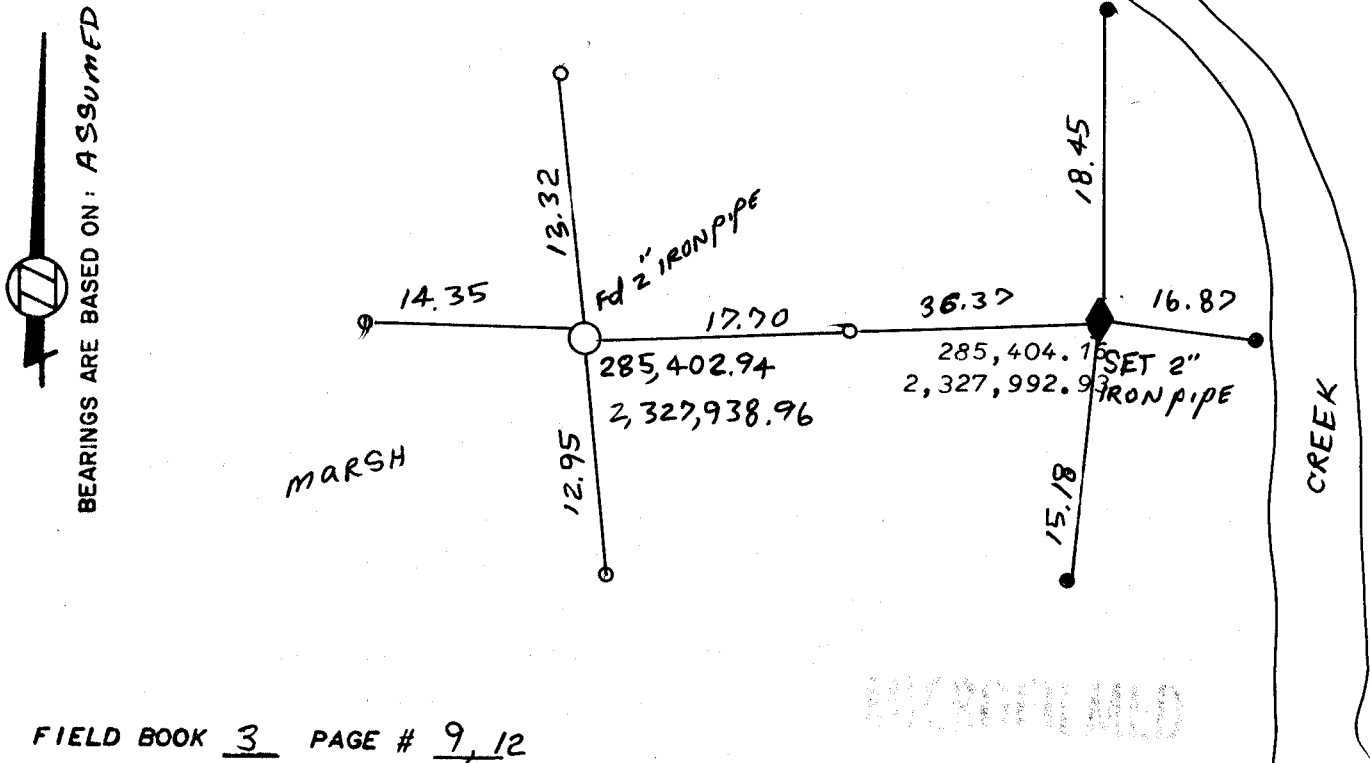
North (Y) 285,404.16 Eleve. (Z) 883
 East (X) 2,327,992.93 Zone SOUTH
 Hor. Datum _____ Vert. Datum _____
 $\theta + 0^{\circ}50'22.8''$ SCALE FACTOR 0.999988

EXAMPLE



(a.) CORNER MONUMENT

WITNESS MONUMENT 2" X 5" IRON PIPE WITH FITTING ON TOP 2' ABOVE GROUND



FIELD BOOK 3 PAGE # 9, 12

SHOW A PLAN VIEW DRAWING DEPICTING THE CORNER MONUMENT AND SURROUNDING PHYSICAL FEATURES, INCLUDING THE EXCAVATION AREA AND DEPTH. THE CORNER MONUMENT SHALL HAVE THE FOLLOWING CHARACTERISTICS: 1) HAVE AT LEAST TWO PREDETERMINED BREAK-OFF POINTS. 2) IF BROKEN, LEAVE A PERMANENTLY MAGNETIZED REMNANT AT THE ORIGINAL POINT. 3) MUST BE EXTENDABLE. 4) THE CAP IS INSCRIBED: ROCK COUNTY SURVEY MONUMENT - PENALTY FOR DISTURBING MARKER. 5) OR AN EXISTING CUT LIMESTONE. AN IRON PIPE 1 1/2" X 4'0" (MINIMUM) MAY BE USED IN AREAS WHERE GROUND WATER IS WITHIN ONE FOOT OF THE SURFACE. IF THE CORNER IS OCCUPIED BY AN IMPROVEMENT (MANHOLE, BURIED CABLE, ETC.) ANY DURABLE, DISTINCT MONUMENT MAY BE USED. CORNERS SHALL BE REFERENCED WITH AT LEAST 4 DURABLE WITNESS MONUMENTS. WITNESS MONUMENTS SHALL BE MADE OF CONCRETE, NATURAL STONE, IRON OR OTHER EQUALLY DURABLE MATERIAL, EXCEPT WOOD. DESCRIBE THE CORNER AND THE WITNESS MONUMENTS.

CORNER CODE: T 25

(b.) Describe any record evidence, monument evidence, occupational evidence, testimonial evidence or any other material evidence you considered, and whether the monument was found or placed.

1. 1836, MAR, Brink set the corner.
2. 1891 Ray Taylor, Walworth County Surveyor, used the corner to subdivide sec 30 T3NR15E.
3. 1975, MAY, Rock County Surveyor set a 1 1/2" X 5 1/2" iron pipe.
4. 1975, JUNE, Harold Combs used the pipe for a certified survey in sec 30. Recorded as CSM VOL 2 PAGE 329.
5. 1983, May 1 set a 2" X 5" IRON PIPE. & CARSONITE POSTS.

(c.) Was the corner restored through acceptance of (1) an obliterated evidence location, or, (2) a found perpetuated location?

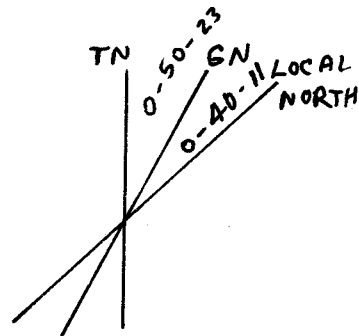
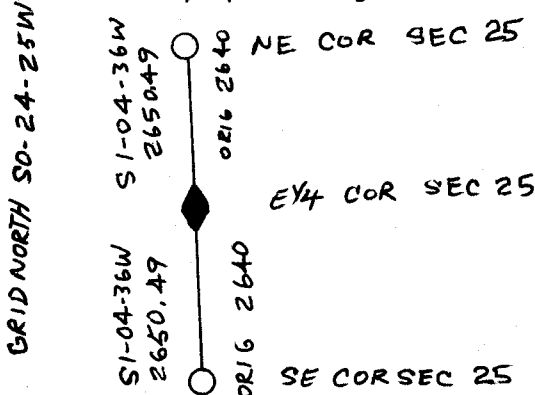
NO

(d.) Describe any material discrepancy between the location of the corner as restored or reestablished and the location of that corner as previously restored or reestablished by distance and direction. Show the discrepancy on the plan view drawing under (a), above. Show the distances between the corner as previously restored or reestablished and (1) the corner as restored or reestablished, and (2) to at least 4 of the witness monuments shown on the drawing in (a), above.

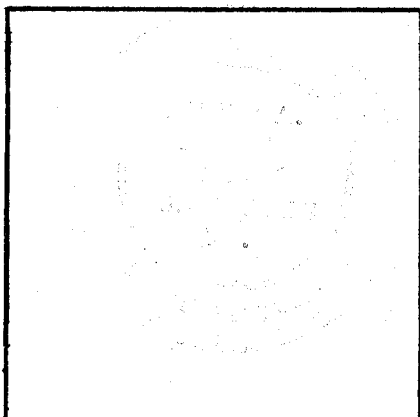
FORMER COUNTY SURVEYOR DID NOT STATE HOW HE SET THE CORNER. FIELD NOTES AND COUNTY SURVEYOR'S RECORDS INDICATE HE DID NOT USE THE CONC MON THAT WAS SET BY WALWORTH COUNTY. THE CSM NOTES THE CONC. MON.

(e.) Was the corner reestablished through lost corner proportionate methods? If so, show the method, including the directions and distances to other public land survey corners used as evidence or used for proportioning in determining the corner location.

YES



I, Ronald Barnes, hereby certify that the corner points as identified by the corner code index were, in a field survey on May 10, 1983, established, re-established, monumented, re-monumented, recovered or restored as expressed below and in conformance with the regulations and rules as required in the current manual of survey instructions of the United States Department of Interior, Bureau of Land Management.



COUNTY SURVEYOR FILING DATA

Date of Computer Entry _____

Date Received _____

Date Microfilmed 10/05/1984

Treasurer's Receipt No. _____

Number of Included Sheets 1

AFFIX YOUR LAND SURVEYOR SEAL. T 25