

# U.S. PUBLIC LAND SURVEY MONUMENT RECORD

For Public Land Survey Corners in:

WI ADMINISTRATIVE CODE A-E 7.08 REQUIREMENT

T. 5 N., R. 14 E

### CORNER CODE INDEX

A	1	2	3	4	5	6	7	8	9	10	11	12	13	14	15	16	17	18	19	20	21	22	23	24	25
B																									
C	6																								
D		5																							
E			4																						
F				3																					
G	1																								
H		8																							
J			9																						
K				10																					
L	18																								
M		11																							
N			16																						
O				15																					
P					14																				
Q	19																								
R		20																							
S			21																						
T				22																					
U					23																				
V						24																			
W							25																		
X								26																	
Y									27																
Z										28															
											29														
												30													
													31												
														32											
															33										
																34									
																	35								
																		36							

Koshkonong TWP

ROCK COUNTY WI

IF AVAILABLE  
ROCK COUNTY COORDINATES PREFERRED

North \_\_\_\_\_ Elev. \_\_\_\_\_

East \_\_\_\_\_

Hor. Datum \_\_\_\_\_ Vert. Datum \_\_\_\_\_

LATITUDE \_\_\_\_\_ ELLIPS. HT. \_\_\_\_\_

LONGITUDE \_\_\_\_\_

GPS (X) \_\_\_\_\_ TRAVERSE (X) \_\_\_\_\_

BASED ON THE FOLLOWING CONTROL:

PLACE MONUMENT SYMBOL  $\blacklozenge$  AT PROPER LOCATION ON ABOVE INDEX

$\blacklozenge$  CORNER MONUMENT       $\circ$  WITNESS MONUMENT

(a)

THOMAS WOLLIN, JEFFERSON COUNTY SURVEYOR,  
PROVIDED THE STATE PLANE COORDINATES FOR  
CORNER CODE #6101 COR SE SEC33T 5 N R/14 E

STATE PLANE COORDINATES N/S 309,780.801  
NAD 1983/91 OF RECORD E/W 2,280,605.164

I DONALD BARNES CONVERTED THE ABOVE  
COORDINATES TO THE FOLLOWING:

LATITUDE 42-50-38.29264  
LONGITUDE 88-50-10.41982  
MERIDIAN CONV. 0-47-58.67  
SCALE FACTOR 0.9999795319

ROCK COUNTY COORDINATES (NAD 1983/91)

N/S 327,921.15  
E/W 543,295.455  
SCALE 1.0000005767

CONVERGENCE: THE ANGULAR DIFFERENCE  
BETWEEN THE GEODETIC NORTH & THE ROCK  
COUNTY MERCATOR NORTH

$\oplus$  DEG 0 MIN 09 SEC 37.7

BEARINGS ARE BASED ON:

*Donald Barnes*  
*2/12/03*

FIELD BOOK \_\_\_\_\_ PAGE # \_\_\_\_\_

SHEET 1 OF 1

SHOW A PLAN VIEW DRAWING DEPICTING THE CORNER MONUMENT AND SURROUNDING PHYSICAL FEATURES, INCLUDING THE EXCAVATION AREA AND DEPTH.

PLANNING & ZONING COMMITTEE ADOPTED THE ABOVE FORM ON 12/2/1982

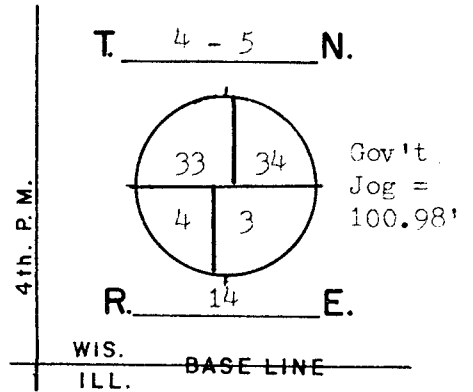
*File in Lima*  
CORNER CODE A-13/A

# GOVERNMENT LAND CORNER RECORD\*

## JEFFERSON COUNTY

CORNER NO. 6101

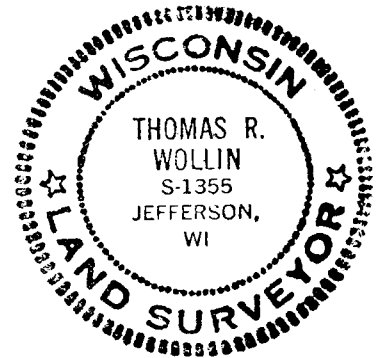
TYPE OF MONUMENT Aluminum Magnetized  
 STATE PLANE COORDINATES N. 309780.801  
NAD 1983/91 E. 2280605.164 SE-33  
 ELEVATION M.S.L. DATUM: \_\_\_\_\_  
 Grid-Ground 1.0000565405  
 FIELD BOOK Koshkonong p. 148  
 DRAWN BY TRW



### BASIS FOR MONUMENTATION

Original Survey, 1834-37, Wood Post & Bearing Trees  
 Resurvey of Koshkonong Township, by Milo C. Jones.  
 August-December, 1886. Field notes say that for  
 the corner of SE-33, that the corner was verified.  
 A Limestone monument, Approx. 6" by 36" long with a  
 squared finished top, was set for the corner. Notes  
 recorded in the Register of Deeds, Miscellaneous  
 Volume 1, pages 389-412.  
 1980, Cornerstone for SE-33 was dug for and found by  
 Rock County Surveyor. The stone was found about 3'  
 below road surface near the center of pavement. The  
 corner for NW-3 was also dug for. Aluminum monuments  
 were set for the corners.  
 3/12/2002, G.P.S. coordinates are assigned. A Topcon  
 GP-SX1 single-frequency receiver was used.

SEAL:

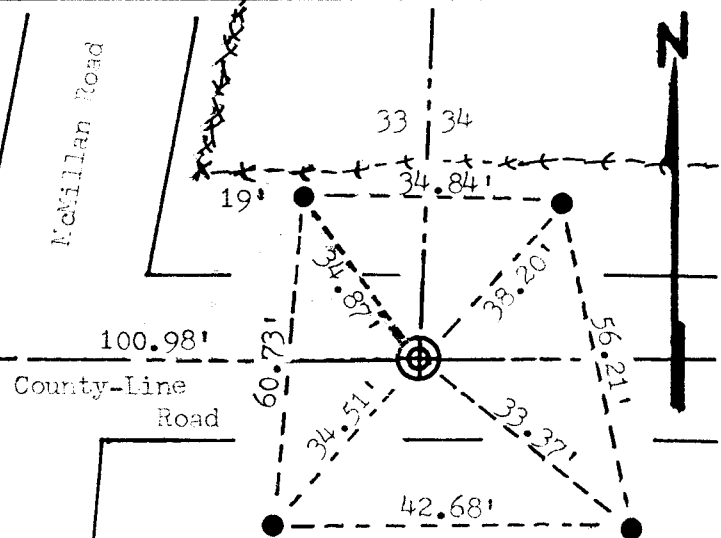


DATA SHOWN HERE ON  
 CERTIFIED CORRECT:

*Thomas R. Wollin*  
 REGISTERED LAND SURVEYOR  
 DATED 6/29/1982

### LOCATION SKETCH

- SQUARE CUT LIMESTONE
- CONCRETE / BRASS CAP
- ALUMINUM MAGNETIZED 4" by 30"
- IRON PIPE
- RR SPIKE
- PK NAIL
- FENCE
- UTILITY POLE
- STEEL POST / SIGN



MAINTENANCE RECORD		
DATE	INIT.	REMARKS

● 1/2" by 36" long Iron Bolt set flush with ground

\* U.S. PUBLIC LAND SURVEY MONUMENT RECORD

A. 13/14