

MICROFILMED

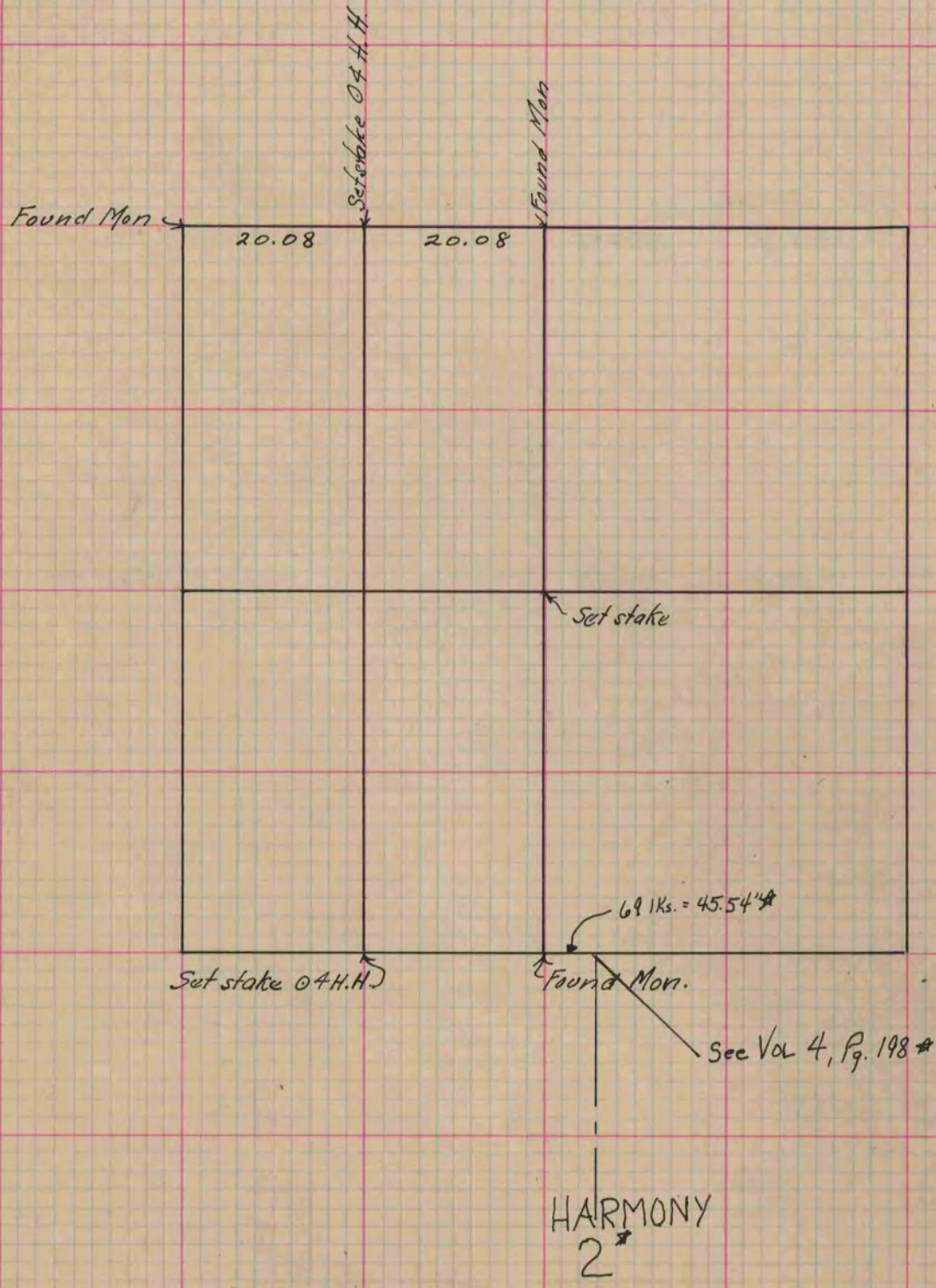
PLAT AND RECORD

Of a Survey on Section 35 T 4 R 13 E. of the 4 P. M. in Milton Township
Rock County, Wisconsin, made May the 28th 1873

I hereby certify that the following is a correct record of said survey as made by me.

COUNTY BUILDING
CITY OF JANESVILLE

(Signed) R. K. Lee { Deputy
R. H. B. County Surveyor.



* Copied from Beloit records
12/10/75
G.O.

Copied from P. 60 Vol. 2. Original County Surveyors Record