

300 VOL. 5 PLAT AND RECORD

Of a Survey on Section 17, 18 T 1 N R 10 E. of the 4 P. M. in AVON Township  
 Rock County, Wisconsin, made JULY the 11

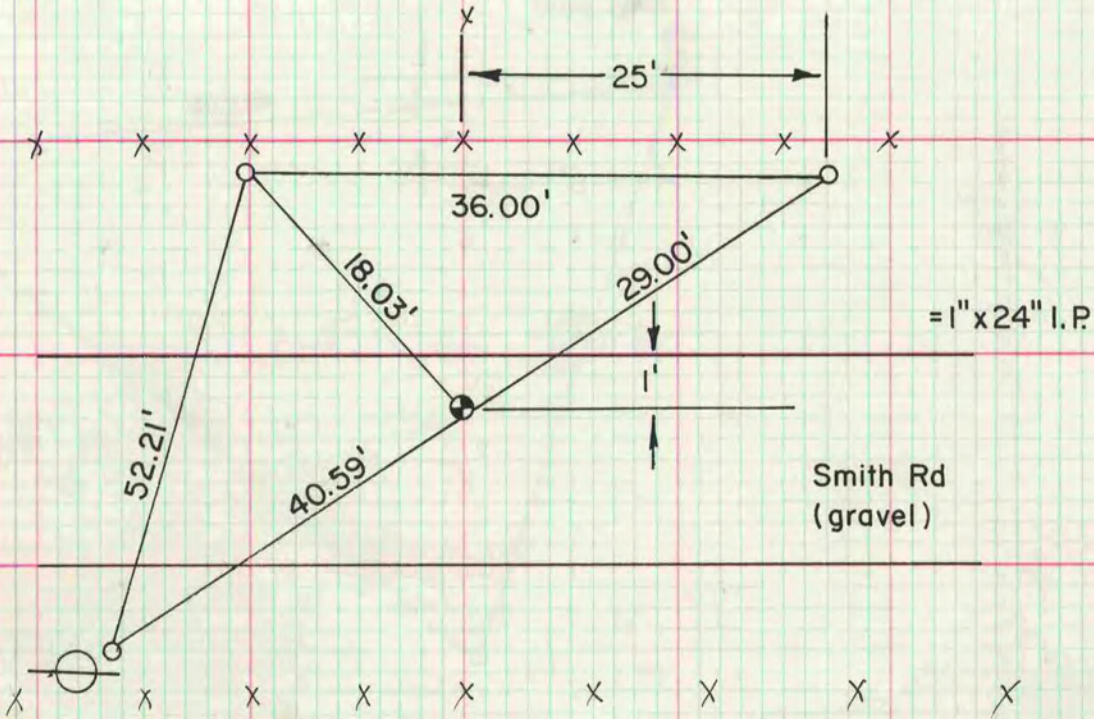
I hereby certify that the following is a correct record of said survey as made by me.

COUNTY BUILDING  
 CITY OF JANESVILLE

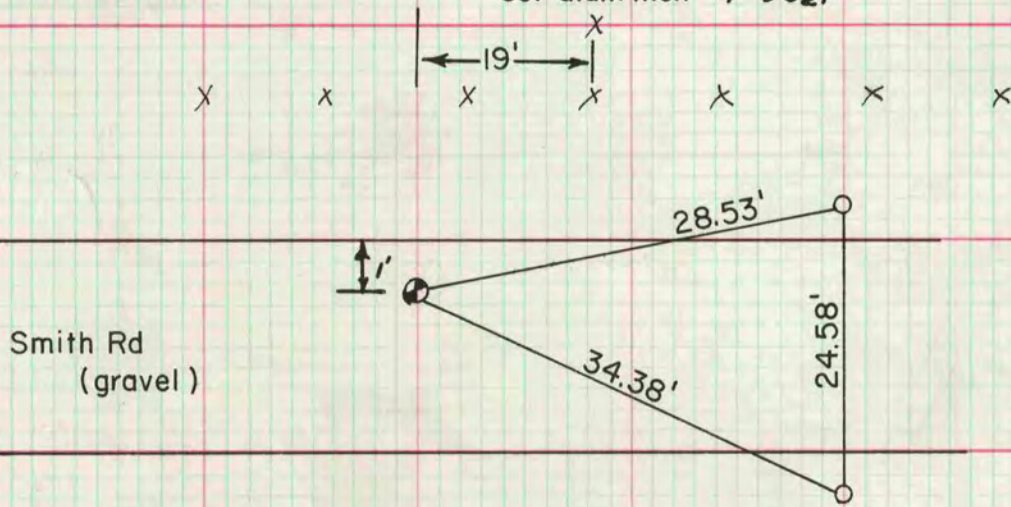


MICROFILMED

N 1/4 cor sec 17-1-10  
 dug fd nothing. set alum mon. 1' DEEP



N 1/4 cor sec 18-1-10  
 fd grade bar. 1' deep  
 set alum mon 1' DEEP



W 1/4 COR: Corner needs to be dug for. Set PK on line with  
 NW & SW corner of SEC 18. PK is N of N side of bridge 226.2'  
 and 2.5' W of E edge of C.T.H. 'T.

