

# PLAT AND RECORD

**MICROFILMED**

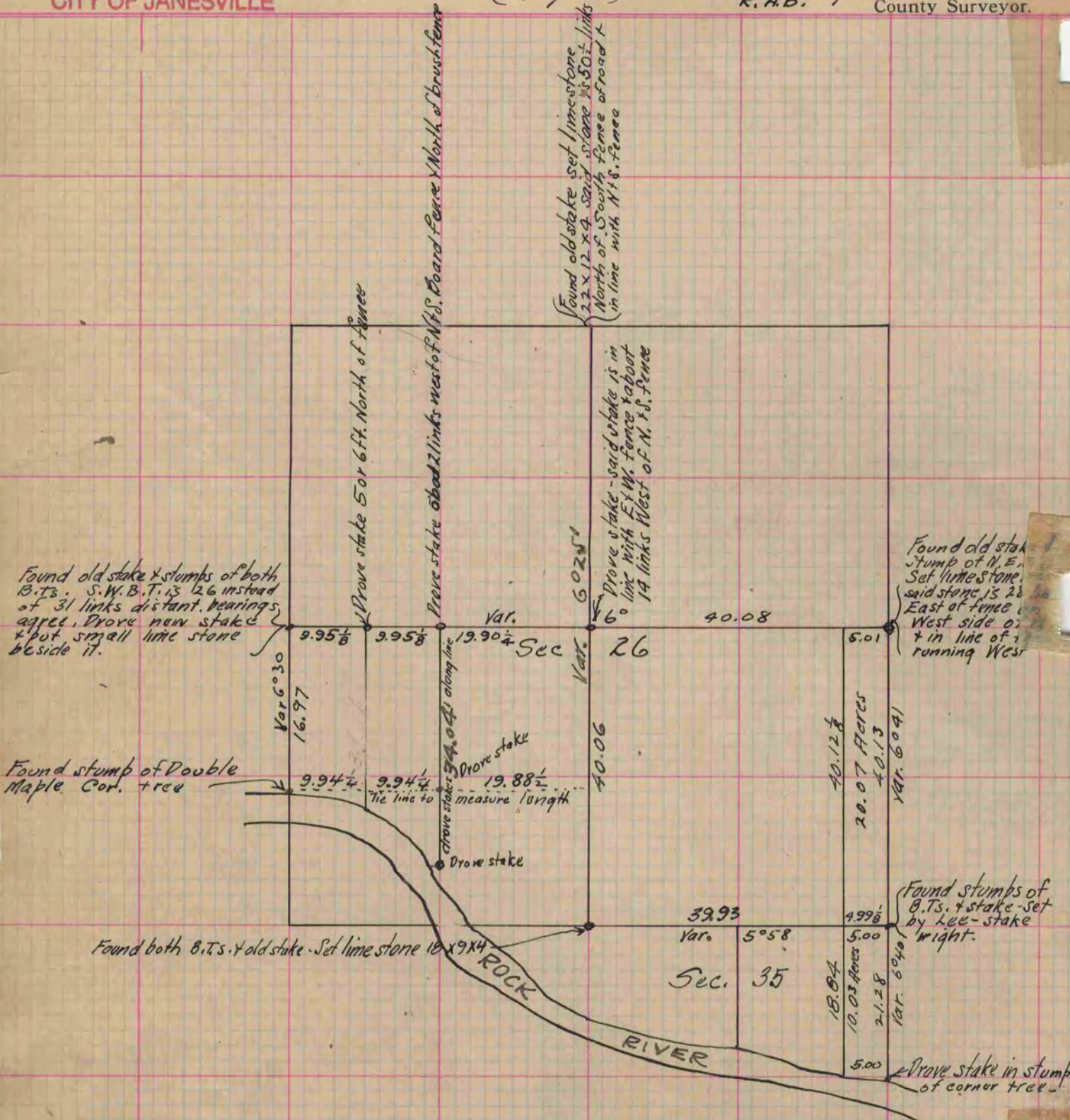
Of a Survey on Section 26 + 35 T 2 R 12 E. of the 4 P. M. in Rock Township

Rock County, Wisconsin, made October the 13 & 14 1873

I hereby certify that the following is a correct record of said survey as made by me.

COUNTY BUILDING  
CITY OF JANESVILLE

(Signed) Edward Ruger  
R. H. B. County Surveyor.



Copied from Page 68 Vol. 2 Original County Surveyors Record