

PLAT AND RECORD VOL. 5

111
V-5

COUNTY BUILDING
CITY OF JANESVILLE

Of a Survey on Section 6 T. 2 R. 12 E. of the 4 P. M. in ROCK Township

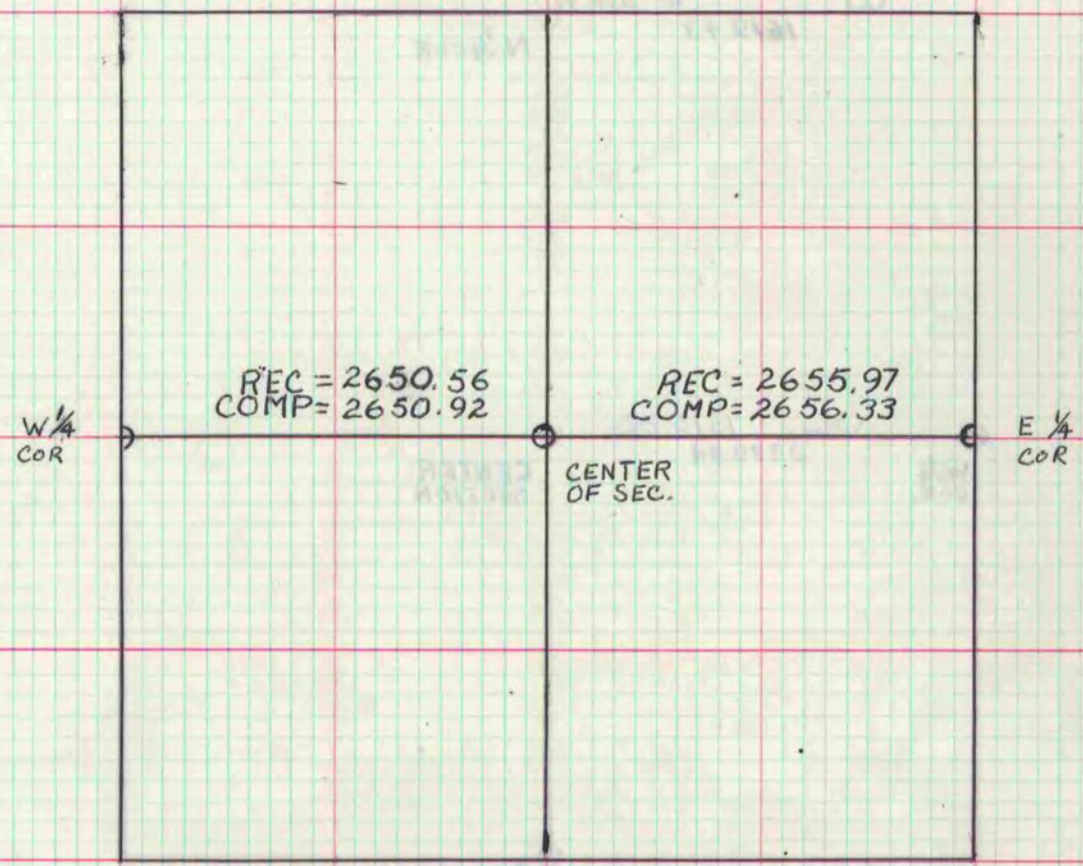
Rock County, Wisconsin, made MARCH the 3 19 75

I hereby certify that the following is a correct record of said survey as made by me.

MICROFILMED

Atto J. Schroeder
County Surveyor.

BY HLCOMBS



NOTE: ALL DISTANCES ARE MEASURED WITH E.D.M.

- WEST 1/4 CORNER: DUG AND FOUND CUT STONE MON. 1' BELOW THE SURFACE
- EAST 1/4 CORNER: FOUND OLD FENCE POST SET BY LOCKE IN 1866
- CEN. OF SECTION: SET PIPE BY PRORATION BETWEEN E 1/4 COR AND W 1/4 COR. AND LOCKE'S MEASUREMENTS ON THE EAST AND WEST CENTERLINE