

MICROFILMED

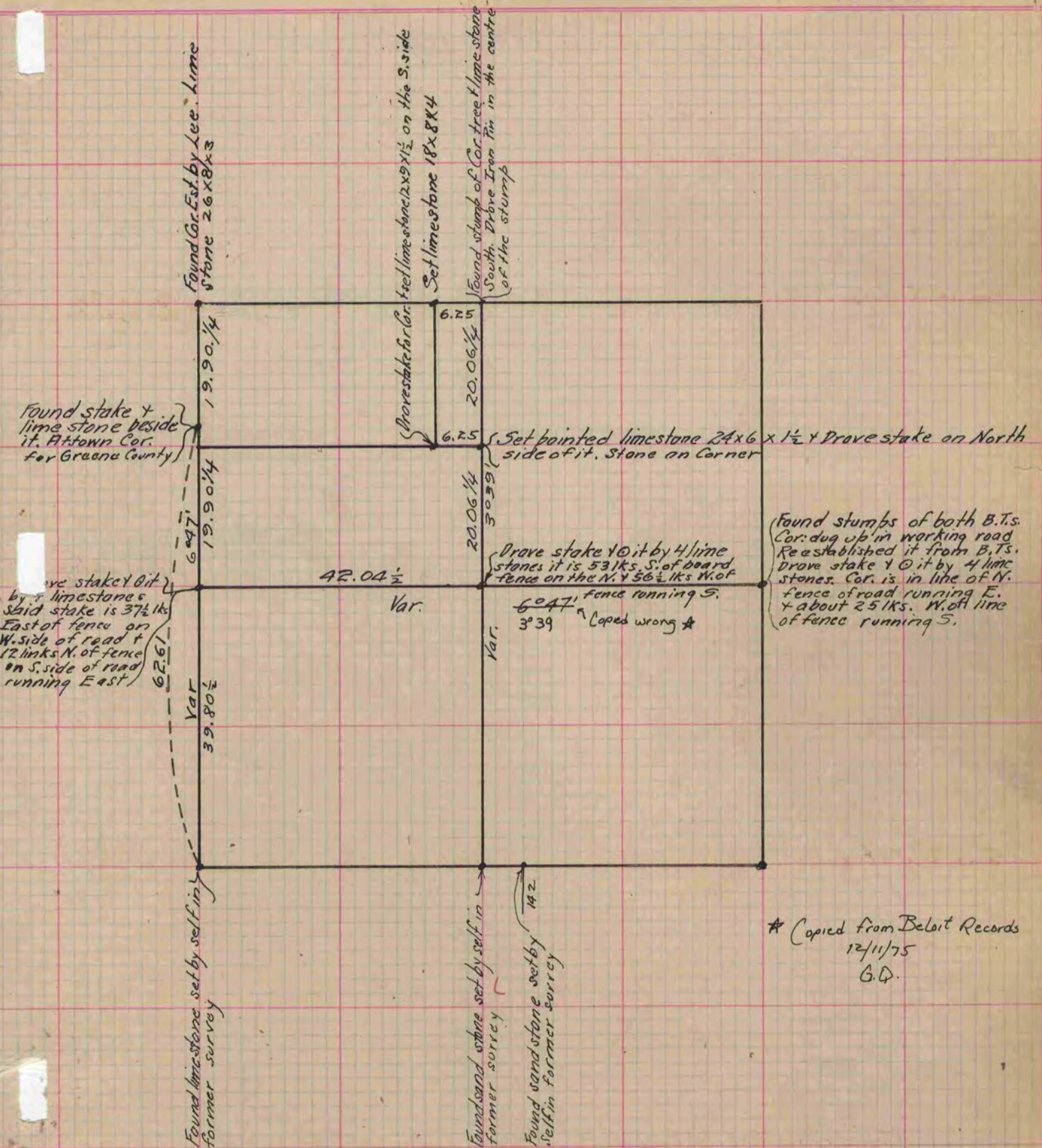
PLAT AND RECORD

Of a Survey on Section 31 T 2 R 10 E. of the 4 P. M. in Spring Valley Township
Rock County, Wisconsin, made April the 7th 1874

I hereby certify that the following is a correct record of said survey as made by me.

COUNTY BUILDING
CITY OF JANESVILLE

(Signed) Edward Ruger
R.H.B. County Surveyor.



* Copied from Beloit Records
12/11/75
G.D.

Copied from P. 89 V. 2. Original County Surveyors Record