

# PLAT AND RECORD

**MICROFILMED**

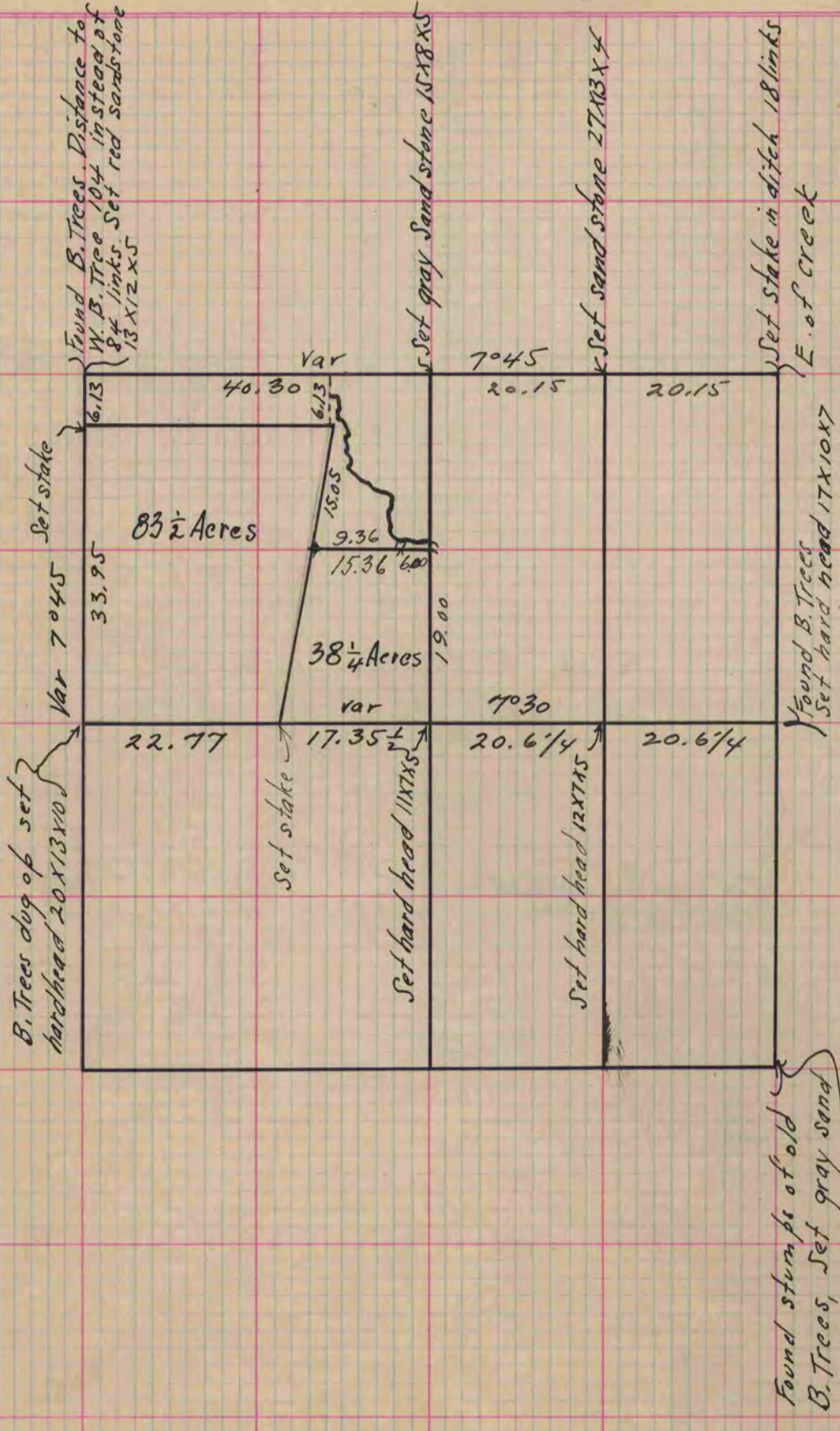
Of a Survey on Section 9 T 3 R 10 E. of the 4 P. M. in Magnolia Township  
Rock County, Wisconsin, made June the 24<sup>th</sup> & 25<sup>th</sup> 1863

I hereby certify that the following is a correct record of said survey as made by me.

COUNTY BUILDING  
CITY OF JANESVILLE

(Signed) S. D. Locke  
S.H.B

County Surveyor.



Copied from upper part of page 192 Vol. One County Surveyors Record