

MICROFILMED

PLAT AND RECORD

341
V-1

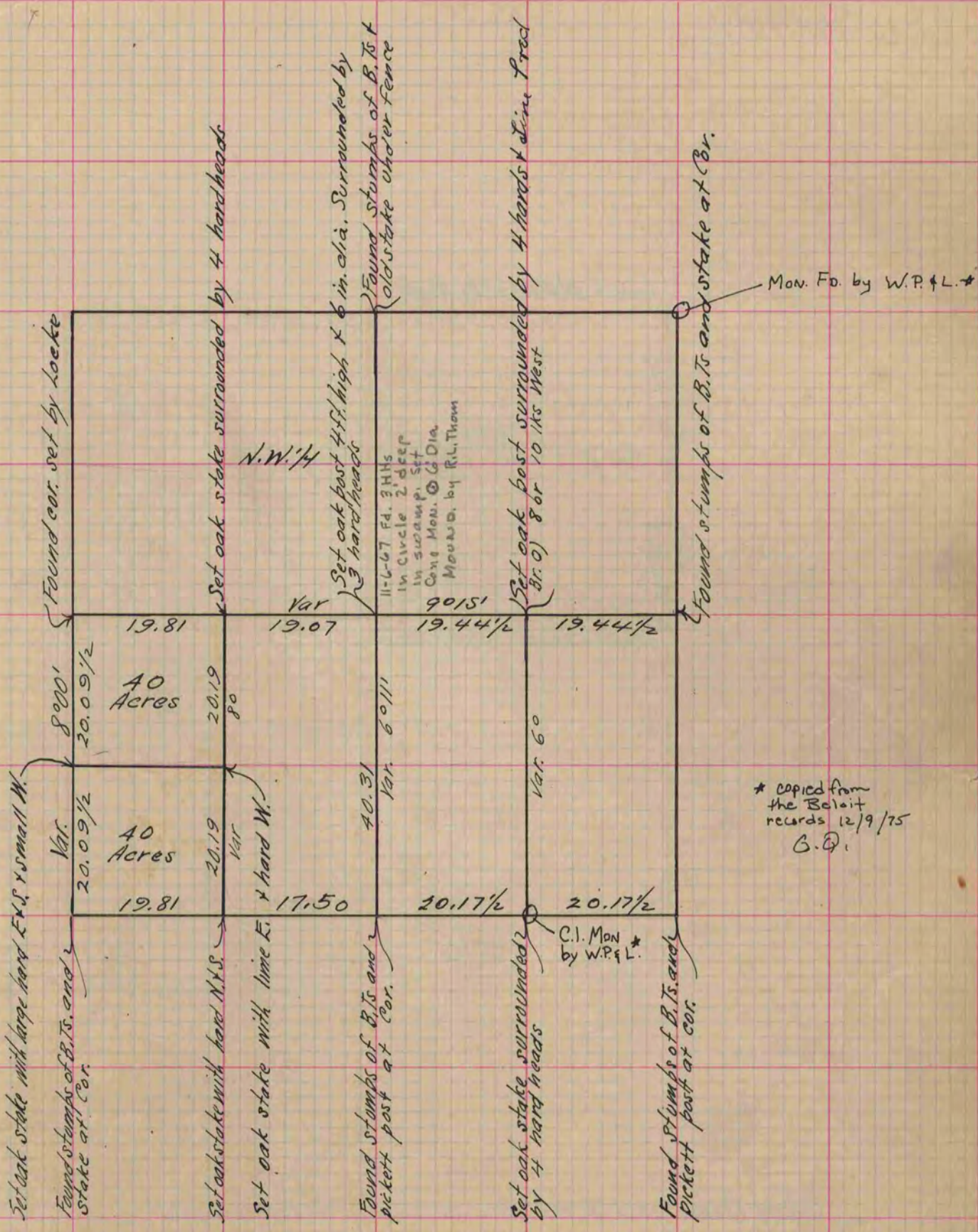
COUNTY BUILDING
CITY OF JANESVILLE

Of a Survey on Section 6 T 3 R 12 E. of the 4 P. M. in Janesville Township

Rock County, Wisconsin, made April the 12th & 13th 1869

I hereby certify that the following is a correct record of said survey as made by me.

(Signed) R. K. Lee
R.H.B. Dep. County Surveyor.



Copied from Page 278 Vol. 1. Original County Surveyors Record