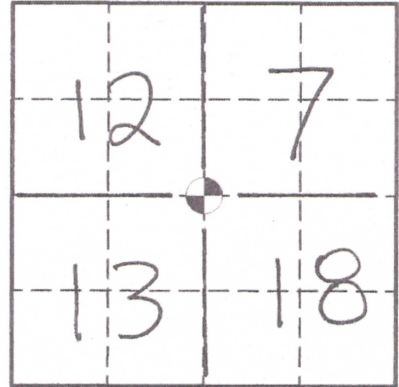


TEMPORARY ROCK COUNTY PUBLIC LAND SURVEY MONUMENT RECORD

This record shall show the location of the corner and shall include all of the following elements (a through j)

(a) **CORNER LOCATION**

SW OF SECTION 7
 TOWNSHIP 3 NORTH, RANGE 12 EAST
 TOWN OF JANESVILLE



ROCK COUNTY COORDINATES

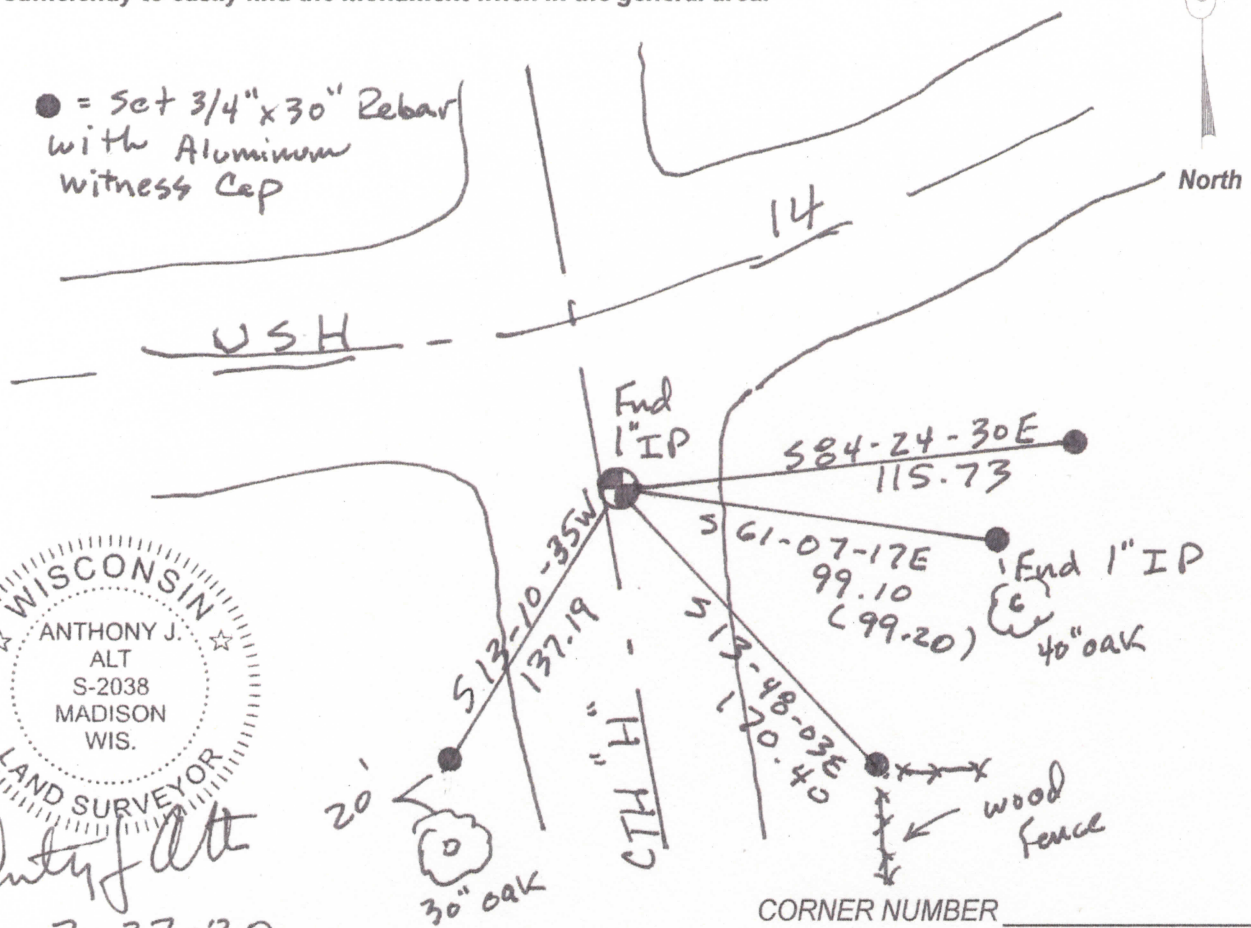
NORTHING: 286,481.95
 EASTING: 464,209.70
 WISCORS ROCK COUNTY NAD83(2011)

(b) Describe any record evidence, monument evidence, occupational evidence, testimonial evidence or any other material evidence you considered, and whether the monument was found or placed.

Found 1" I.P. in road
 Accepted location

(c) CORNER LOCATION SKETCH: in the sketch, provide reference ties to at least 4 witness monuments of lasting durable material.

(d) The sketch shall include physical features surrounding the monument location sufficiently to easily find the monument when in the general area.



ANTHONY J. ALT
 S-2038
 MADISON
 WIS.
 LAND SURVEYOR
Anthony J. Alt
 7-27-20

PLAT AND RECORD

COUNTY BUILDING
CITY OF JANESVILLE

Of a Survey on Section.....T.....R.....E. of the 4 P. M. in.....Township

Rock County, Wisconsin, made.....MARCH.....the.....11th.....1992

I hereby certify that the following is a correct record of said survey as made by me.

Ronald Baines

County Surveyor.

THE FOLLOWING INFORMATION WAS PROVIDED BY TIM DIEBLES, DEPARTMENT OF TRANSPORTATION, DISTRICT 1. THIS INFORMATION APPLIES TO DOT CONSTRUCTION PROJECTS THAT OCCURRED IN THE LAST FIVE YEARS.

STH 11
Project from Orfordville to Green County Line. DOT engineer installed section and quarter corner monuments from County Surveyor's tie sheets.

STH 14
Project from CTH F to Evansville. D.O.T. engineer installed section and quarter corner monuments from County Surveyor's tie sheets.

STH 351 (AVALON RD.)
Project from CTH G to I90. Project consultant installed section and quarter corner monuments from County Surveyor's tie sheets.

STH 11
Project from CTH J to I90. Project consultant installed section corner monument from County Surveyor's township project data.

STH 26
Project from Milton to Jefferson County line. Project consultant installed section and quarter corner monuments from consultant's tie sheets.

U.S. PUBLIC LAND SURVEY MONUMENT RECORD

For Public Land Survey Corners in the

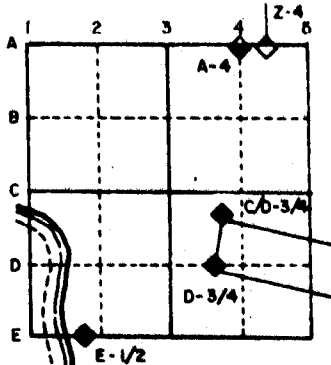
T. 3 N., R. 12 E.

CORNER CODE INDEX

	1	2	3	4	5	6	7	8	9	10	11	12	13	14	15	16	17	18	19	20	21	22	23	24	25
A																									
B	6																								
C		5																							
D			4																						
E				3																					
F					2																				
G																									
H	7																								
I		8																							
J			9																						
K				10																					
L					11																				
M						12																			
N	13																								
O		14																							
P			15																						
Q				16																					
R					17																				
S						18																			
T							19																		
U								20																	
V									21																
W										22															
X											23														
Y												24													
Z													25												
														26											
															27										
																28									
																	29								
																		30							
																			31						
																				32					
																					33				
																						34			
																							35		
																								36	

PLACE MONUMENT SYMBOL (◆) AT PROPER LOCATION ON ABOVE INDEX

EXAMPLE



JANESVILLE TWP
ROCK COUNTY WI

IF AVAILABLE
STATE PLANE COORDINATES

North (Y) 267,457,87 Elev. (Z) _____

East (X) 2,233,527,24 Zone _____

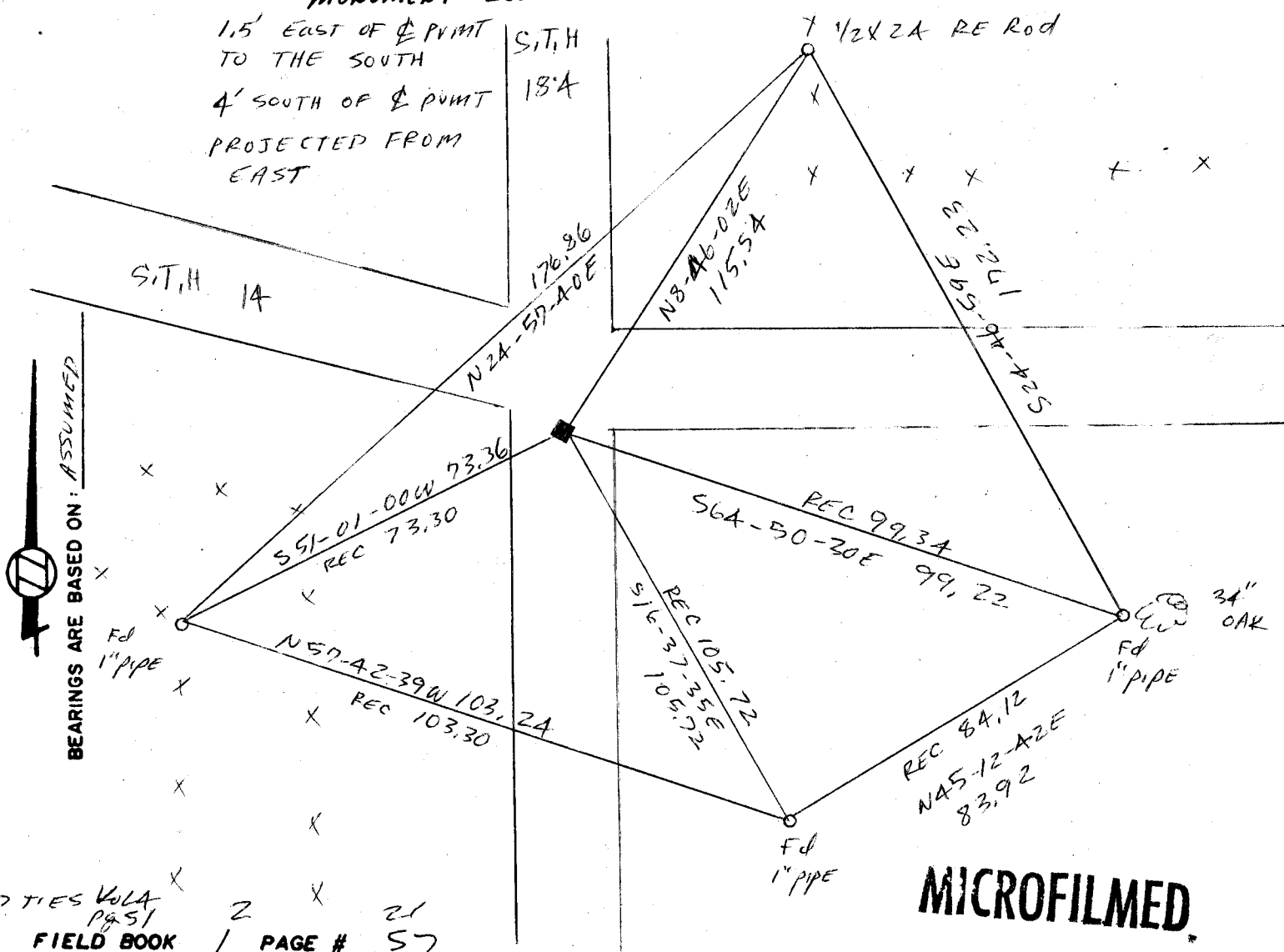
Hor. Datum 891.7 Vert. Datum _____

267,456.60 DOT 1989 267,463.16
2,233,527.11 STEEGE #1781 2,233,526.13

(a) **◆ CORNER MONUMENT MONUMENT BOX**

1.5' EAST OF Φ POINT TO THE SOUTH
4' SOUTH OF Φ POINT PROJECTED FROM EAST

○ WITNESS MONUMENT



SHOW A PLAN VIEW DRAWING DEPICTING THE CORNER MONUMENT AND SURROUNDING PHYSICAL FEATURES, INCLUDING THE EXCAVATION AREA AND DEPTH. THE CORNER MONUMENT SHALL HAVE THE FOLLOWING CHARACTERISTICS: 1) HAVE AT LEAST TWO PREDETERMINED BREAK-OFF POINTS. 2) IF BROKEN, LEAVE A PERMANENTLY MAGNETIZED REMNANT AT THE ORIGINAL POINT. 3) MUST BE EXTENDABLE. 4) THE CAP IS INSCRIBED: ROCK COUNTY SURVEY MONUMENT - PENALTY FOR DISTURBING MARKER. 5) OR AN EXISTING CUT LIMESTONE. AN IRON PIPE 1 1/2" x 4'0" (MINIMUM) MAY BE USED IN AREAS WHERE GROUND WATER IS WITHIN ONE FOOT OF THE SURFACE. IF THE CORNER IS OCCUPIED BY AN IMPROVEMENT (MANHOLE, BURIED CABLE, ETC.) ANY DURABLE, DISTINCT MONUMENT MAY BE USED. CORNERS SHALL BE REFERENCED WITH AT LEAST 4 DURABLE WITNESS MONUMENTS. WITNESS MONUMENTS SHALL BE MADE OF CONCRETE, NATURAL STONE, IRON OR OTHER EQUALLY DURABLE MATERIAL, EXCEPT WOOD. DESCRIBE THE CORNER AND THE WITNESS MONUMENTS.

CORNER CODE: J1

(b.) Describe any record evidence, monument evidence, occupational evidence, testimonial evidence or any other material evidence you considered, and whether the monument was found or placed.

1960 BATTERMAN JR. 1960 VOL 4 PG 51 FOUND POINTED HH
1964 COMBS VOL 4 PG 51 SET MONUMENT BOX

FOUND 1" PIPE IN MONUMENT BOX

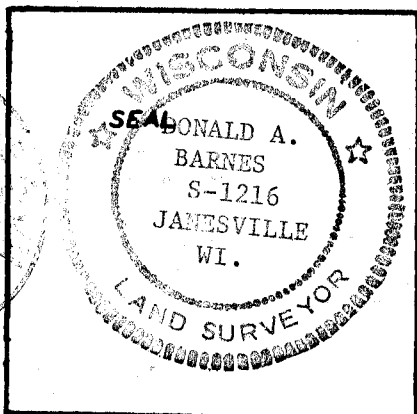
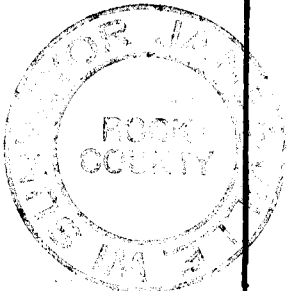
(c.) Was the corner restored through acceptance of (1) an obliterated evidence location, or, (2) a found perpetuated location?

ACCEPTED FOUND PERPETUATED LOCATION

(d.) Describe any material discrepancy between the location of the corner as restored or reestablished and the location of that corner as previously restored or reestablished by distance and direction. Show the discrepancy on the plan view drawing under (a), above. Show the distances between the corner as previously restored or reestablished and (1) the corner as restored or reestablished, and (2) to at least 4 of the witness monuments shown on the drawing in (a), above.

(e.) Was the corner reestablished through lost corner proportionate methods? If so, show the method, including the directions and distances to other public land survey corners used as evidence or used for proportioning in determining the corner location.

I, Ronald A. Barnes, hereby certify that the corner points as identified by the corner code index were, in a field survey on July 21, 1987, established, re-established, monumented, re-monumented, recovered or restored as expressed below and in conformance with the regulations and rules as required in the current manual of survey instructions of the United States Department of Interior, Bureau of Land Management.



COUNTY SURVEYOR FILING DATA

Date of Computer Entry _____

Date Received _____

Date Microfilmed _____

Treasurer's Receipt No. _____

Number of Included Sheets _____

AFFIX YOUR LAND SURVEYOR SEAL.

CORNER CODE 11

