

U.S. PUBLIC LAND SURVEY MONUMENT RECORD

For Public Land Survey Corners In:
T. 3 N. - R. 14 E. of the 4th P.M.

WI. ADMINISTRATIVE CODE
A-E 7.08 REQUIREMENT

CORNER CODE INDEX

(PLACE SYMBOL AT THE PLSS CORNER)

	1	2	3	4	5	6	7	8	9	10	11	12	13	14	15	16	17	18	19	20	21	22	23	24	25		
A	6	5	4	3	2	1																					A
B																											B
C																											C
D																											D
E																											E
F																											F
G	7	8	9	10	11	12																					G
H																											H
J																											J
K																											K
L	18	17	16	15	14	13																					L
M																											M
N																											N
O																											O
P	19	20	21	22	23	24																					P
Q																											Q
R																											R
S																											S
T	30	29	28	27	26	25																					T
U																											U
V																											V
W																											W
X																											X
Y	31	32	33	34	35	36																					Y
Z																											Z

JOHNSTOWN Twp.
Rock County, WI.



COORDINATES

**GNSS DERIVED VIA WISCORS
WISCORS, ROCK DATUM, (NA2011)**

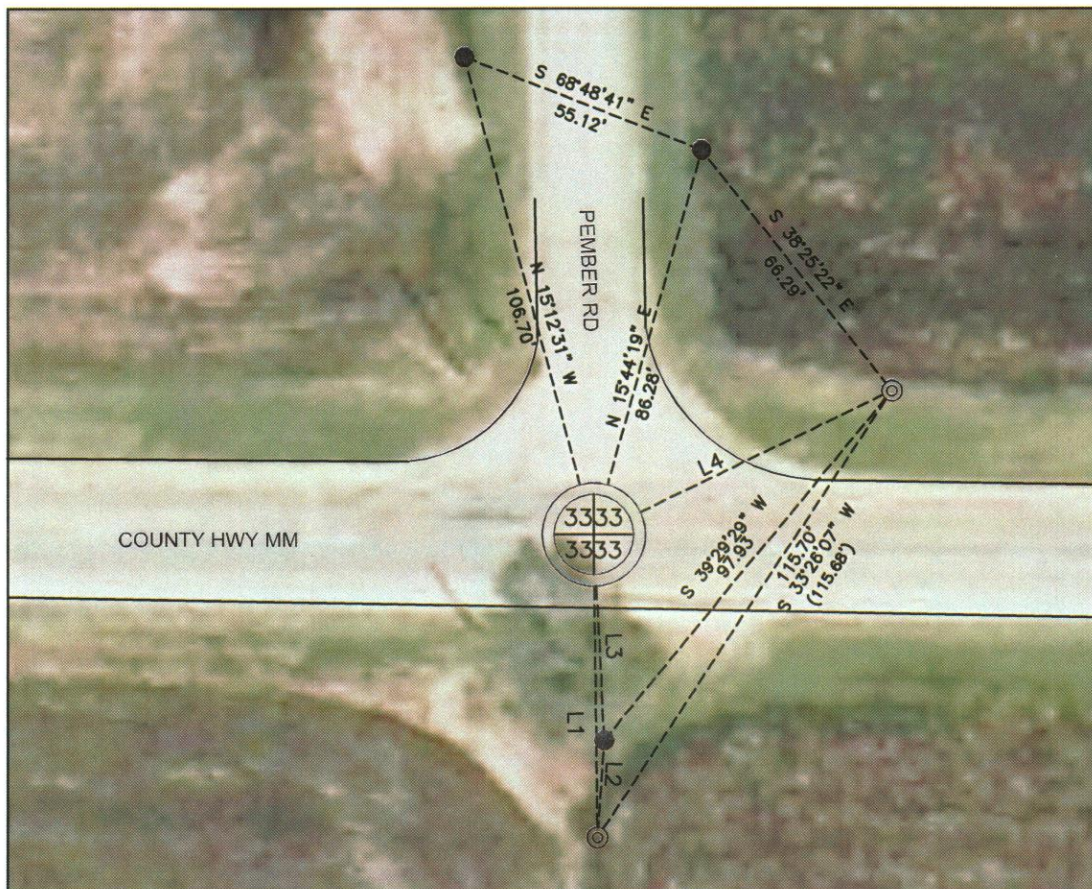
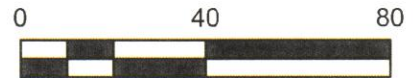
NORTHING: 266700.70 ELEV: n/a
EASTING: 540921.87
Vertical Datum: NAVD 88, (If applicable)

(a) - Legend

- 1/2" Iron rebar found
- 1" Iron pipe found
- 3/4" Rebar w/ cap set



- Set Steel Nail Survey Marker
Section 33- Johnstown Township



LINE	BEARING	DISTANCE	RECORD
L1	S 00°44'29" E	65.47'	65.45'
L2	S 04°01'06" W	21.03'	N/A
L3	S 10°12'24" E	33.05'	N/A
L4	N 64°17'07" E	71.70'	71.70"

Field book: Projects 2017
Page: 43

B) Describe any record evidence, monument evidence, occupational evidence, testimonial evidence or any other material evidence you considered, and whether the monument was found or placed.

I returned post-construction and found 2 remaining ties from last tie sheet (Heuer 2016). Set 3 more ties and replaced the monument with a steel survey nail.

C) Was the corner restored through acceptance of (1) an obliterated evidence location, or, (2) a found perpetuated location?

Found perpetuated location.

D) Describe any material discrepancy between the location of the corner as restored or reestablished and the location of that corner as previously restored or reestablished by distance and direction. Show the discrepancy on the plan view drawing under (a), above. Show the distances between the corner as previously restored or reestablished and (1) the corner as restored or reestablished, and (2) to at least 4 of the witness monuments shown on the drawing in (a), above.

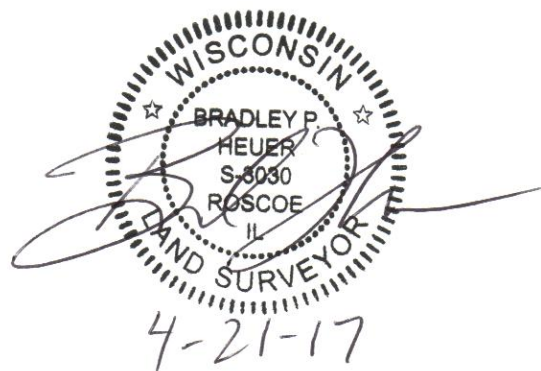
I did not find a discrepancy between the corner restored and a previously documented corner location. *Discrepancy* being defined as *disagreeing* with a corner location, *not* as noting dimensional differences between current/former tie sheets due to measuring methods. The current and *most recent* tie-sheet dimensions filed for the corner are noted.

(E) Was the corner reestablished through lost corner proportionate methods? If so, show the method, including the directions and distances to other public land survey corners used as evidence or used for proportioning the corner location.

N/A

I, **Brad Heuer**, hereby certify that the corner location as identified by the corner code index was determined by me under my direction and control and that this U.S. Public Land Survey Monument Record is correct and complete to the best of my knowledge and belief.

CORNER CODE: X-11 (2)
(A.E. 7.08 REQUIREMENT)



U.S. PUBLIC LAND SURVEY MONUMENT RECORD

For Public Land Survey Corners In:
T. 3 N. - R. 14 E. of the 4th P.M.

WI. ADMINISTRATIVE CODE
A-E 7.08 REQUIREMENT

CORNER CODE INDEX

(PLACE SYMBOL AT THE PLSS CORNER)

	1	2	3	4	5	6	7	8	9	10	11	12	13	14	15	16	17	18	19	20	21	22	23	24	25
A	6	5	4	3	2	1																			
B																									
C																									
D																									
E																									
F	7	8	9	10	11	12																			
G																									
H																									
J																									
K	18	17	16	15	14	13																			
L																									
M																									
N																									
O																									
P	19	20	21	22	23	24																			
Q																									
R																									
S																									
T																									
U																									
V																									
W	30	29	28	27	26	25																			
X																									
Y																									
Z																									
	1	2	3	4	5	6	7	8	9	10	11	12	13	14	15	16	17	18	19	20	21	22	23	24	25

JOHNSTOWN Twp.
Rock County, WI.



COORDINATES

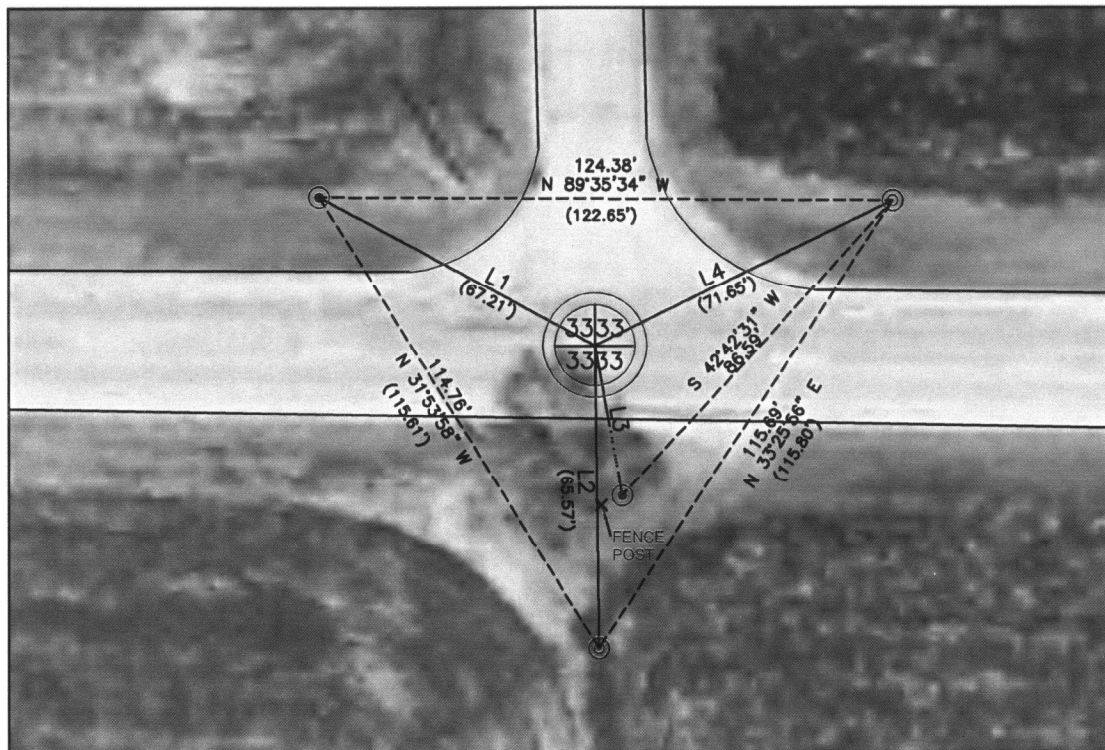
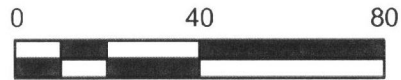
**GNSS DERIVED VIA WISCORS
WISCRS, ROCK DATUM, (NA2011)**

NORTHING: 266700.70 ELEV: n/a
EASTING: 540921.87
Vertical Datum: NAVD 88, (If applicable)

(a) - Legend

- 1/2" Iron rebar found
- 1" Iron pipe found

- Found Limestone in Monument Box
Section 33- Johnstown Township



LINE	BEARING	DISTANCE
L1	N 61°51'27" W	67.81'
L2	S 00°44'33" E	65.45'
L3	S 10°12'24" E	33.05'
L4	N 64°17'15" E	71.68'

Field book: Projects 2015
Page: 43

B) Describe any record evidence, monument evidence, occupational evidence, testimonial evidence or any other material evidence you considered, and whether the monument was found or placed.

I found four witness monuments and the limestone in the monument box as shown on the X-11 tie-sheet, (Batterman 1969). The distances for the southernmost and easternmost witness monuments seem to check within tolerance and I believe those are the only two original witness points remaining from the 1969 tie sheet. I accepted the found limestone as the Center of Section 33. The PLSS corner will most likely be destroyed during the 2016 MM road reconstruction, so I will return post-construction to reset the corner.

C) Was the corner restored through acceptance of (1) an obliterated evidence location, or, (2) a found perpetuated location?

Found perpetuated location.

D) Describe any material discrepancy between the location of the corner as restored or reestablished and the location of that corner as previously restored or reestablished by distance and direction. Show the discrepancy on the plan view drawing under (a), above. Show the distances between the corner as previously restored or reestablished and (1) the corner as restored or reestablished, and (2) to at least 4 of the witness monuments shown on the drawing in (a), above.

I did not find a discrepancy between the corner restored and a previously documented corner location. *Discrepancy* being defined as *disagreeing* with a corner location, *not* as noting dimensional differences between current/former tie sheets due to measuring methods. The current and *most recent* tie-sheet dimensions filed for the corner are noted.

(E) Was the corner reestablished through lost corner proportionate methods? If so, show the method, including the directions and distances to other public land survey corners used as evidence or used for proportioning the corner location.

N/A

I, **Brad Heuer**, hereby certify that the corner location as identified by the corner code index was determined by me under my direction and control and that this U.S. Public Land Survey Monument Record is correct and complete to the best of my knowledge and belief.

CORNER CODE: X-11 (1)
(A.E. 7.08 REQUIREMENT)

