

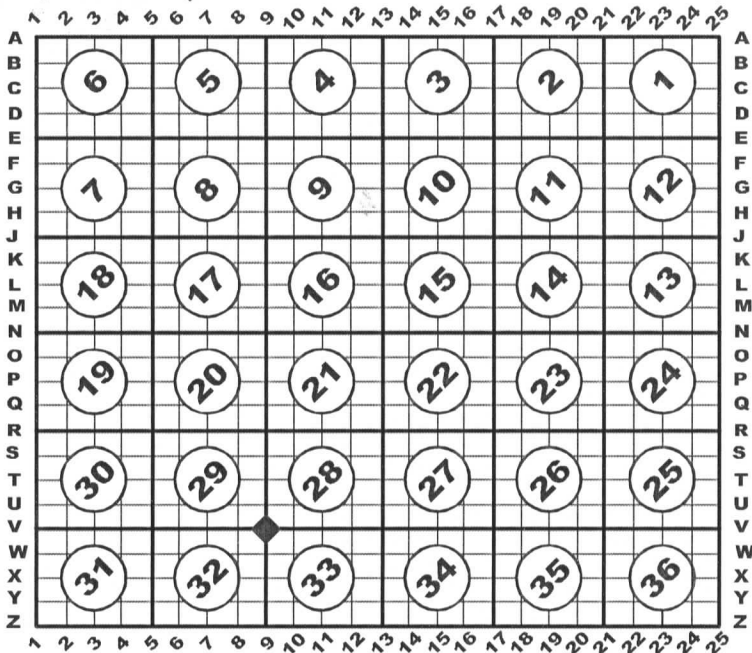
U.S. PUBLIC LAND SURVEY MONUMENT RECORD

For Public Land Survey Corners In:
T. 1 N. - R. 13 E. of the 4th P.M.

WI. ADMINISTRATIVE CODE
A-E 7.08 REQUIREMENT

CORNER CODE INDEX

(PLACE SYMBOL AT THE PLSS CORNER)



TURTLE Twp.
Rock County, WI.



COORDINATES

**GNSS DERIVED VIA WISCORS
WISCORS, ROCK DATUM, (NA2011)**

NORTHING: 206230.11 ELEV: n/a

EASTING: 506733.81

Vertical Datum: NAVD 88, (If applicable)

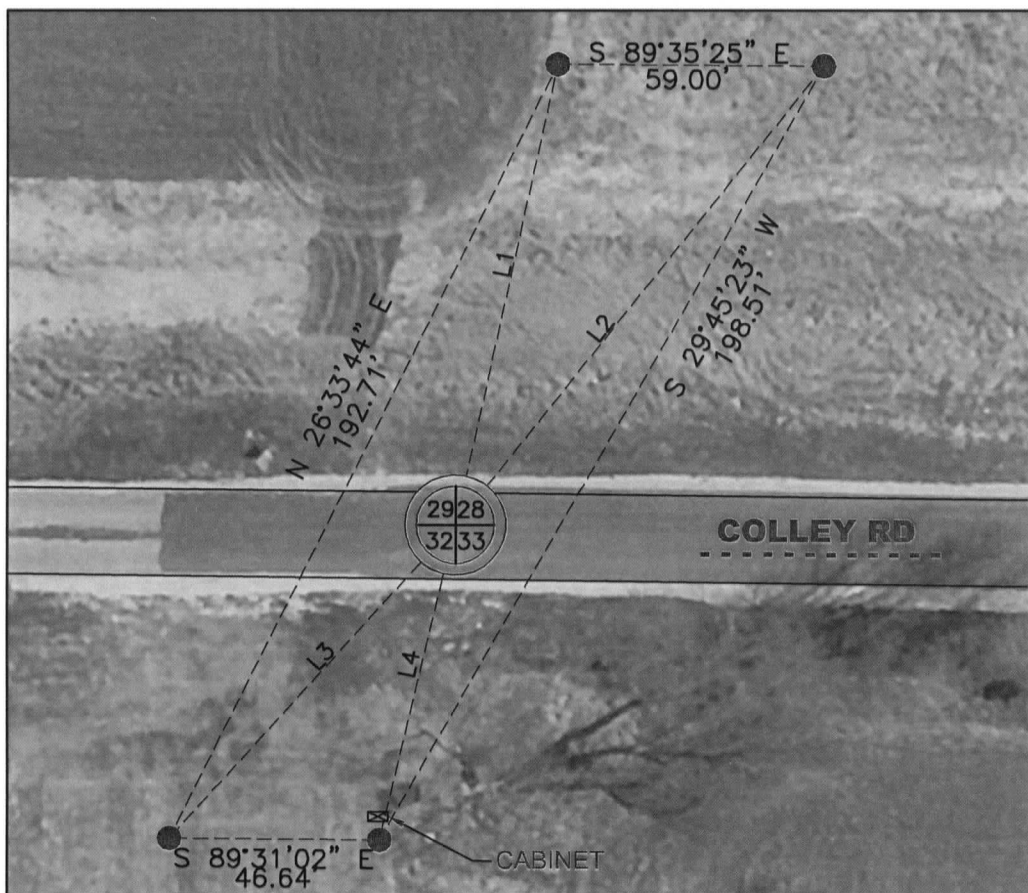
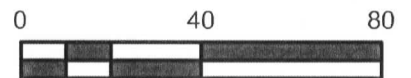
(a) - Legend

- 3/4" Iron rebar w/ cap set



- Set Steel Survey Nail
post 2016 construction

LINE	BEARING	DISTANCE
L1	N 12°30'18" E	105.05'
L2	N 38°40'18" E	130.81'
L3	S 42°15'22" W	94.32'
L4	S 13°26'45" W	72.19'



B) Describe any record evidence, monument evidence, occupational evidence, testimonial evidence or any other material evidence you considered, and whether the monument was found or placed.

Prior to construction I recovered the aluminum monument and the majority of the witness monuments as shown on the V-9 tie-sheet (Barnes, 2012). I accepted the witness monuments and accepted the Aluminum Monument as the Northeast corner of Section 32 and set 4 rods with caps. After construction was complete I recovered the 4 remaining rods with caps and set a steel nail to replace the destroyed aluminum monument.

C) Was the corner restored through acceptance of (1) an obliterated evidence location, or, (2) a found perpetuated location?

Found perpetuated location.

D) Describe any material discrepancy between the location of the corner as restored or reestablished and the location of that corner as previously restored or reestablished by distance and direction. Show the discrepancy on the plan view drawing under (a), above. Show the distances between the corner as previously restored or reestablished and (1) the corner as restored or reestablished, and (2) to at least 4 of the witness monuments shown on the drawing in (a), above.

I did not find a discrepancy between the corner restored and a previously documented corner location. *Discrepancy* being defined as *disagreeing* with a corner location, *not* as noting dimensional differences between current/former tie sheets due to measuring methods. The current and *most recent* tie-sheet dimensions filed for the corner are noted.

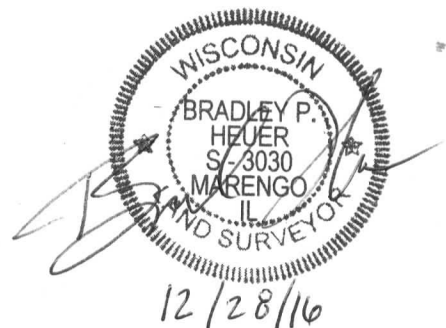
(E) Was the corner reestablished through lost corner proportionate methods? If so, show the method, including the directions and distances to other public land survey corners used as evidence or used for proportioning the corner location.

N/A

I, **Bradley P. Heuer**, hereby certify that the corner location as identified by the corner code index was determined by me under my direction and control and that this U.S. Public Land Survey Monument Record is correct and complete to the best of my knowledge and belief.

CORNER CODE: V-9 (4)
(A.E. 7.08 REQUIREMENT)

Page 2 of 2



U.S. PUBLIC LAND SURVEY MONUMENT RECORD

For Public Land Survey Corners In:
T. 1 N. - R. 13 E. of the 4th P.M.

WI. ADMINISTRATIVE CODE
A-E 7.08 REQUIREMENT

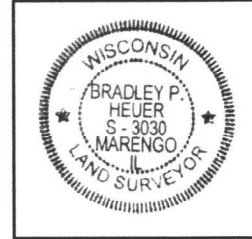
CORNER CODE INDEX

(PLACE SYMBOL AT THE PLSS CORNER)

	1	2	3	4	5	6	7	8	9	10	11	12	13	14	15	16	17	18	19	20	21	22	23	24	25
A	6	5	4	3	2	1																			
B																									
C																									
D																									
E																									
F	7	8	9	10	11	12																			
G																									
H																									
I																									
J	18	17	16	15	14	13																			
K																									
L																									
M																									
N																									
O																									
P	19	20	21	22	23	24																			
Q																									
R																									
S																									
T																									
U	30	29	28	27	26	25																			
V																									
W																									
X																									
Y	31	32	33	34	35	36																			
Z																									

TURTLE Twp.

Rock County, WI.



COORDINATES

GNSS DERIVED VIA WISCORS

WISCORS, ROCK DATUM, (NA2011)

NORTHING: 206230.11 ELEV: n/a

EASTING: 506733.81

Vertical Datum: NAVD 88, (If applicable)

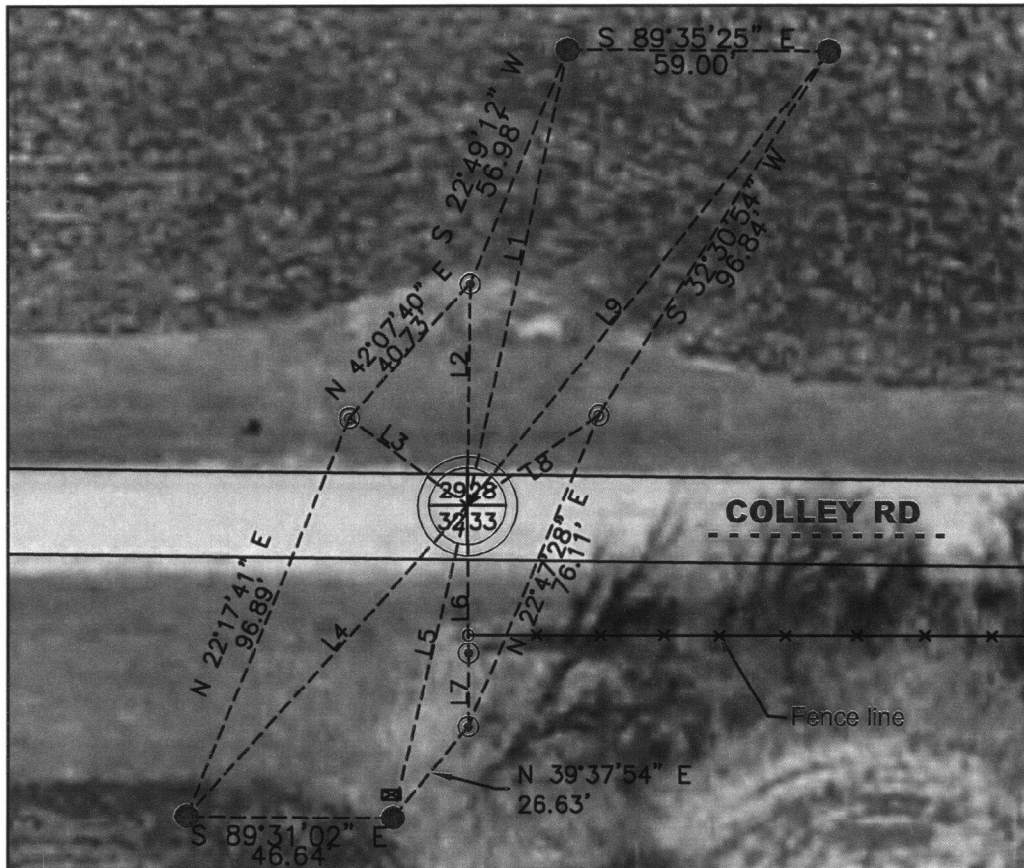
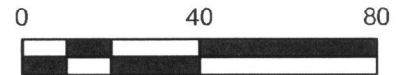
(a) - Legend

- ⊙ - 3/4" Iron rebar w/ cap found
- ⊙ - 1" Iron pipe found
- - 3/4" Iron rebar w/ cap set
- - Fence post



- Found Aluminum Monument
Sections 33 & 34- Turtle Township

LINE	BEARING	DISTANCE
L1	N 12°30'18" E	105.05'
L2	N 00°44'27" E	50.04'
L3	N 53°21'59" W	33.24'
L4	S 42°15'22" W	94.32'
L5	S 13°26'45" W	72.19'
L6	S 00°22'17" E	33.01'
L7	S 00°02'04" W	16.68'
L8	N 55°24'44" E	36.06'
L9	N 38°40'18" E	130.81'



B) Describe any record evidence, monument evidence, occupational evidence, testimonial evidence or any other material evidence you considered, and whether the monument was found or placed.

I found the aluminum monument and the majority of the witness monuments as shown on the V-9 tie-sheet, (Barnes, 2012). I accepted the witness monuments and accepted the Aluminum Monument as the Northeast corner of Section 32. I set 4 additional ties outside of the construction limits. The PLSS corner will likely be destroyed during the 2016 Colley road reconstruction.

C) Was the corner restored through acceptance of (1) an obliterated evidence location, or, (2) a found perpetuated location?

Found perpetuated location.

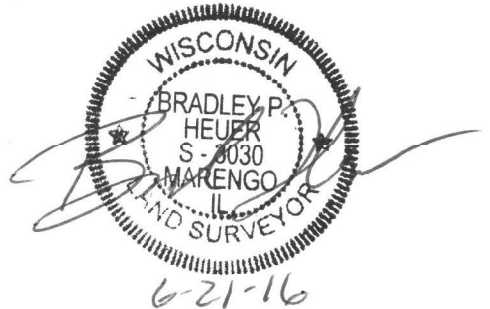
D) Describe any material discrepancy between the location of the corner as restored or reestablished and the location of that corner as previously restored or reestablished by distance and direction. Show the discrepancy on the plan view drawing under (a), above. Show the distances between the corner as previously restored or reestablished and (1) the corner as restored or reestablished, and (2) to at least 4 of the witness monuments shown on the drawing in (a), above.

I did not find a discrepancy between the corner restored and a previously documented corner location. *Discrepancy* being defined as *disagreeing* with a corner location, *not* as noting dimensional differences between current/former tie sheets due to measuring methods. The current and *most recent* tie-sheet dimensions filed for the corner are noted.

(E) Was the corner reestablished through lost corner proportionate methods? If so, show the method, including the directions and distances to other public land survey corners used as evidence or used for proportioning the corner location.

N/A

I, **Brad Heuer**, hereby certify that the corner location as identified by the corner code index was determined by me under my direction and control and that this U.S. Public Land Survey Monument Record is correct and complete to the best of my knowledge and belief.



CORNER CODE: V-9 (3)
(A.E. 7.08 REQUIREMENT)

Paper weight-110# (minimum)

Black nonfading ink required

U.S. PUBLIC LAND SURVEY MONUMENT RECORD

For Public Land Survey Corners In:

WI ADMINISTRATIVE CODE A-E 7.08 REQUIREMENT

T/ 1 N. R. 3 E. 4th P.M.

TURTLE

REV 10/23/2004 USMONREC.DWG

CORNER CODE INDEX

TWP

A	1	2	3	4	5	6	7	8	9	10	11	12	13	14	15	16	17	18	19	20	21	22	23	24	25	A
B		6			5			4			3			2			1									B
C																										C
D																										D
E																										E
F																										F
G																										G
H																										H
J																										J
K																										K
L																										L
M																										M
N																										N
O																										O
P																										P
Q																										Q
R																										R
S																										S
T																										T
U																										U
V																										V
W																										W
X																										X
Y																										Y
Z																										Z

ROCK COUNTY WI

IF AVAILABLE
ROCK COUNTY COORDINATES PREFERRED

North _____ Elev. _____

East _____

Hor. Datum _____ Vert. Datum _____

LATITUDE _____ ELLIPS. HT. _____

LONGITUDE _____

NAD83(91) _____ NETWORK ADJ. YR 2012

GPS (X) _____ TRAVERSE (X) X

BASED ON THE FOLLOWING CONTROL:

Township Project _____

◆ CORNER MONUMENT

○ WITNESS MONUMENT

BEARINGS ARE BASED ON: ROCK COUNTY PROJECTION

FIELD BOOK _____ PAGE # _____
OR OBSERVATION SHEET _____

SHEET 1 OF 2

SHOW A PLAN VIEW DRAWING DEPICTING THE CORNER MONUMENT AND SURROUNDING PHYSICAL FEATURES, INCLUDING THE EXCAVATION AREA AND DEPTH.

PLANNING & ZONING COMMITTEE ADOPTED THIS FORM ON 12/2/1982

CORNER CODE V-9(2)

TU605 SECORSEC29

(B) Describe any record evidence, monument evidence, occupational evidence, testimonial evidence or any other material evidence you considered, and whether the monument was found or placed.

1836 LYONS SET POST CORNER TO SECTIONS 28&29,32&33 & MADE MOUND OF EARTH & SOD.

18?? VOL 6 PG 331 TOWNSHIP ROAD RECORDS. CENTER OF ROAD AT CORNER.

1973 LEE VOL 5 PG 37 SET ALUM. MON. & REFERENCED SAME. 1.5' NORTH OF CENTER OF PVMT.

1994 BARNES V-9 FOUND ALUM. MON. & TIES. ACCEPTED FOUND MONUMENT.

FD ALUM MON & TIES 2.5' NORTH OF CENTER OF PVMT.

C) Was the corner restored through acceptance of (1) an obliterated evidence location, or, (2) a found perpetuated location?

ACCEPTED FOUND ALUM. MONUMENT.

D) Describe any material discrepancy between the location of the corner as restored or reestablished and the location of that corner as previously restored or reestablished by distance and direction. Show the discrepancy on the plan view drawing under (a), above. Show the distances between the corner as previously restored or reestablished and (1) the corner as restored or reestablished, and (2) to at least 4 of the witness monuments shown on the drawing in (a), above.

(E) Was the corner reestablished through lost corner proportionate methods? If so, show the method, including the directions and distances to other public land survey corners used as evidence or used for proportioning the corner location.

I, DONALD BARNES, hereby certify that the corner location as identified by the corner code index was determined by me under my direction and control and that this U.S. Public Land Survey Monument Record is correct and complete to the best of my knowledge and belief.

Donald Barnes
MAY 15, 2012

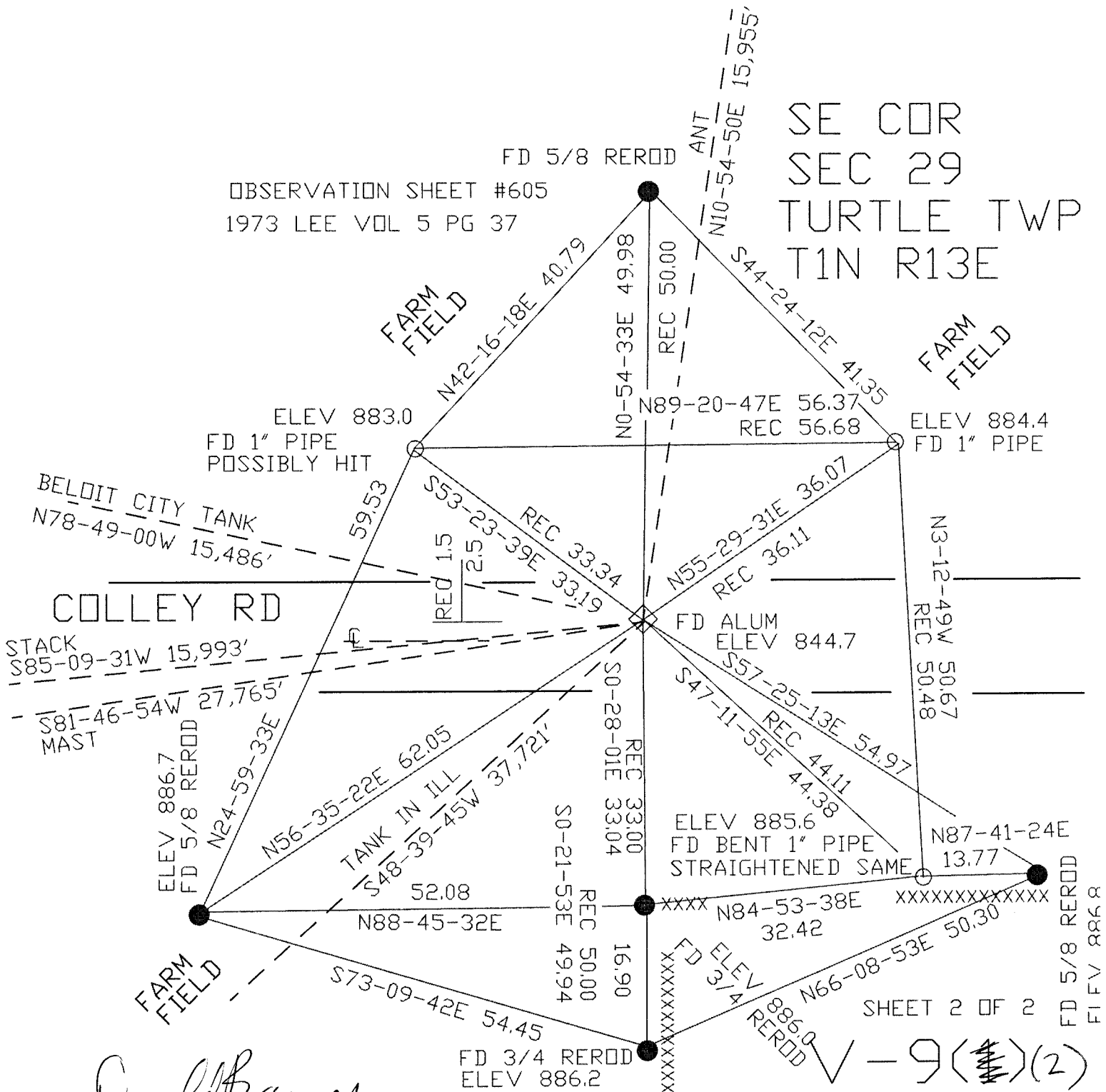
SHEET 1 OF 2

CORNER CODE V-9(2)

A.E. 7.08 REQUIREMENT

OBSERVATION SHEET #605
1973 LEE VOL 5 PG 37

SE COR
SEC 29
TURTLE TWP
T1N R13E



Donald Barnes
May 15, 2012

SHEET 2 OF 2

V-9(11)(2)

U.S. PUBLIC LAND SURVEY MONUMENT RECORD

For Public Land Survey Corners in:

WI ADMINISTRATIVE CODE A-E 7.08 REQUIREMENT

T. 1 N., R. 13 E

CORNER CODE INDEX

A	2	3	4	5	6	7	8	9	10	11	12	13	14	15	16	17	18	19	20	21	22	23	24	25					
B	6																												
C	6																												
D																													
E																													
F	7																												
G		8																											
H			9																										
J				10																									
K					11																								
L	18																												
M		11																											
N			16																										
O				15																									
P					14																								
Q	19																												
R		20																											
S			21																										
T				22																									
U					23																								
V						24																							
W	30																												
X		29																											
Y			28																										
Z				27																									
					26																								
						25																							
							24																						
								23																					
									22																				
										21																			
											20																		
												19																	
													18																
														17															
															16														
																15													
																	14												
																		13											
																			12										
																				11									
																					10								
																						9							
																							8						
																								7					
																									6				
																										5			
																											4		
																												3	
																													2
																													1

TURTLE TWP
ROCK COUNTY WI

IF AVAILABLE
ROCK COUNTY COORDINATES PREFERRED

North 187,692.29 Elev. _____

East 2,245,403.68

Hor. Datum NAD 83 Vert. Datum _____

LATITUDE _____ ELLIPS. HT. _____

LONGITUDE _____

GPS (X) _____ TRAVERSE (X) _____

BASED ON THE FOLLOWING CONTROL:

PLACE MONUMENT SYMBOL \blacklozenge AT PROPER LOCATION ON ABOVE INDEX

\blacklozenge CORNER MONUMENT

\circ WITNESS MONUMENT

(a)

ALUM

NE 32

WIDOT 1003-00-21

DATE: 4-6-95

S 01-06-53 E

2665.71

E 432

BEARINGS ARE BASED ON:

NOTE ON PLAT: COORDINATES & BEARINGS ON THIS PLAT ARE ORIENTED TO THE WI COORDINATE SYSTEM SOUTH ZONE, NAD 83. ALL PLAT DISTANCES ARE GROUND LENGTH AND MAY BE CONVERTED TO GRID LENGTH BY MULTIPLYING THE DISTANCE BY THE GRID FACTOR PROVIDED ON THE DETAIL SHEETS.

4-04-04 206, 229.99 FT COUNTY
506, 733.79

Dr James

FIELD BOOK _____ PAGE # _____

SHEET 1 OF 1

SHOW A PLAN VIEW DRAWING DEPICTING THE CORNER MONUMENT AND SURROUNDING PHYSICAL FEATURES, INCLUDING THE EXCAVATION AREA AND DEPTH.

PLANNING & ZONING COMMITTEE ADOPTED THE ABOVE FORM ON 12/2/1982

CORNER CODE V-9(1)

INFORMATION COPIED FROM WIDOT R/W PLATS. PROJECT NUMBER
AND DATE IS SHOWN ON OPPOSITE SIDE. WHEN COORDINATES WERE
SHOWN IN METERS I REDUCED TO U.S. SURVEY FEET. I REDUCED NAD
83 COORDINATES TO COUNTY COORDINATES.

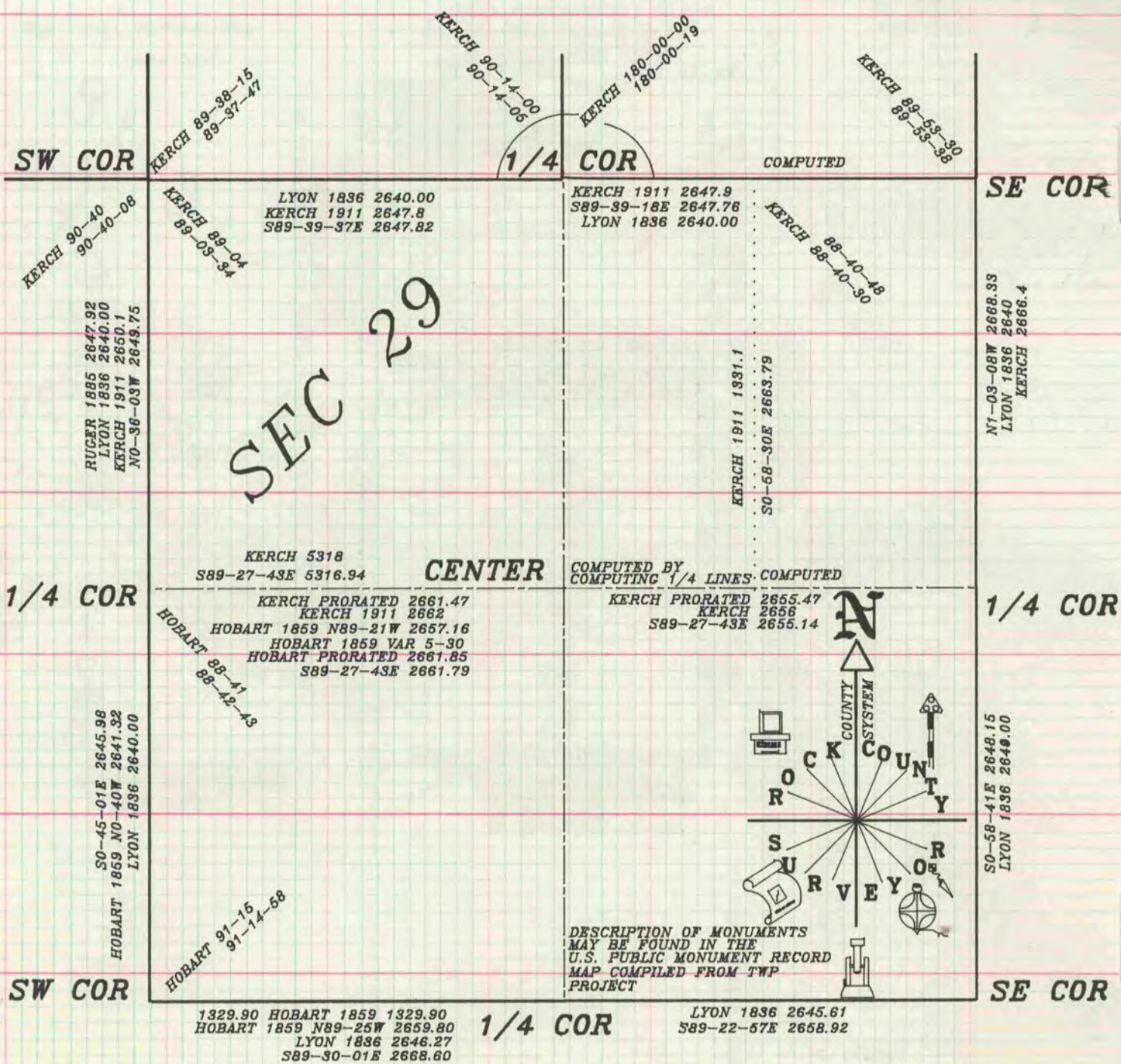
PLAT AND RECORD

Of a Survey on Section 29 T 1 N. R. 13 E. of the 4 P. M. in TURTLE Township
 Rock County, Wisconsin, made AUGUST the 9 th 19 95

I hereby certify that the following is a correct record of said survey as made by me.

COUNTY BUILDING
CITY OF JANESVILLE

County Surveyor.



PUBLIC LAND SURVEY MONUMENT RECORD

For Public Land Survey Corners in the

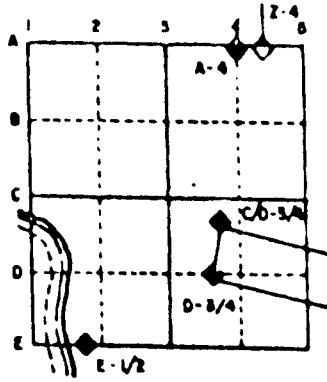
T. 1 N., R. 13 E.

CORNER CODE INDEX

	1	2	3	4	5	6	7	8	9	10	11	12	13	14	15	16	17	18	19	20	21	22	23	24	25
A																									
B	6	5	4	3	2																				
C																									
D	7	8	9	10	11	12																			
E																									
F																									
G	17	16	15	14	13																				
H																									
I	18	17	16	15	14	13																			
J																									
K																									
L	19	20	21	22	23	24																			
M																									
N																									
O																									
P	29	28	27	26	25																				
Q																									
R																									
S																									
T	30	29	28	27	26	25																			
U																									
V																									
W																									
X	31	32	33	34	35	36																			
Y																									

PLACE MONUMENT SYMBOL (◆) AT PROPER LOCATION ON ABOVE INDEX

EXAMPLE



TURTLE TWP
ROCK COUNTY WI

IF AVAILABLE
STATE PLANE COORDINATES

North (Y) 206, 229, 85 Elev. (Z) _____

East (X) 506, 733, 76 Zone _____

Hor. Datum COUNTY Vert. Datum _____

◆ CORNER MONUMENT

○ WITNESS MONUMENT

Fd ALUM mon

Fd TIES IN VOL 15 PG 37

BEARINGS ARE BASED ON:

SHEET _____ OF _____

V9

CORNER CODE:

(B) Describe any record evidence, monument evidence, occupational evidence, testimonial evidence or any other material evidence you considered, and whether the monument was found or placed.

1836 LYONS SET POST CORNER TO SECTIONS 28&29,32&33 & MADE MOUND OF EARTH & SOD.

18?? VOL 6 PG 331 TOWNSHIP ROAD RECORDS. CENTER OF ROAD AT CORNER.

1973 LEE VOL 5 PG 37 SET ALUM. MON. & REFERENCED SAME. 1.5' NORTH OF CENTER OF PVMT.

FOUND ALUM. MON. & TIES.

C) Was the corner restored through acceptance of (1) an obliterated evidence location, or, (2) a found perpetuated location?

ACCEPTED FOUND MONUMENT.

D) Describe any material discrepancy between the location of the corner as restored or reestablished and the location of that corner as previously restored or reestablished by distance and direction. Show the discrepancy on the plan view drawing under (a), above. Show the distances between the corner as previously restored or reestablished and (1) the corner as restored or reestablished, and (2) to at least 4 of the witness monuments shown on the drawing in (a), above.

(E) Was the corner reestablished through lost corner proportionate methods? If so, show the method, including the directions and distances to other public land survey corners used as evidence or used for proportioning the corner location.

NO

I, Donald Barnes, hereby certify that the corner points as identified by the corner code index were, in a field survey on, 1994, established, re-established, monumented, re-monumented, recovered or restored as expressed below and in conformance with the regulations and rules as required in the current manual of survey instructions of the United States Department of Interior, Bureau of Land Management.

seal
Donald Barnes
7/12/95

COUNTY SURVEYOR FILING DATA

Date of computer entry _____

Date microfilmed _____

Number of included sheets _____

CORNER CODE

EMBOSS LAND SURVEYOR SEAL

A-E 7.08 REQUIREMENT

PLAT AND RECORD VOL. 5

37
V-5

COUNTY BUILDING
CITY OF JANESVILLE

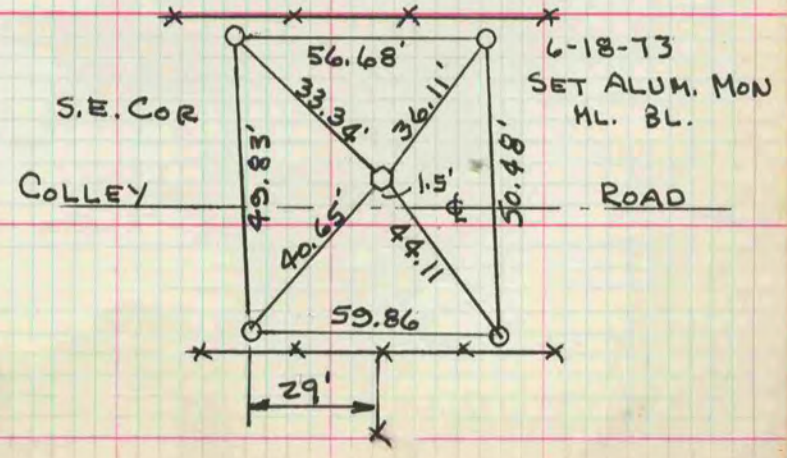
Of a Survey on Section 29 T. 1 N. R. 13 E. of the 4 P. M. in TURTLE Township

Rock County, Wisconsin, made JUNE the 18th 1973

I hereby certify that the following is a correct record of said survey as made by me.

Hugh J. See
County Surveyor.

MICROFILMED



PLAT AND RECORD

331

VOL. 6

Of a Survey on Section 7-12, 33, 35 T. 4 R. 13 E. of the 4 P. M. in **MILTON** Township
 Rock County, Wisconsin, made the 19

I hereby certify that the following is a correct record of said survey as made by me.

COUNTY BUILDING
CITY OF JANESVILLE

Donald Barnes

County Surveyor.

THE FOLLOWING ROAD RECORD INFORMATION IS FROM A BOOK THAT IS IN THE COUNTY CLERK'S VAULT. THE RECORDS ARE FROM 1840-1888. SOME OR ALL OF THE ROADS MAY NOT BE USED. THE BEARINGS AND DISTANCES OF THE CENTER LINE ARE RECORDED AS SURVEYED

MICROFILMED

MILTON TWP T4N R13E

PAGE PAGE SECTION CORNER
56-58 7-12

94

94

CTH N
589 1/4 W 10.40 ch
N 1/4 SEC 33 Rd

N 1/4 S 80 W Rd
SEC 11 2.50 ch

P 694

Rd / SEC COR
20 ch SEC 35
75 LK T 5 N R 13 E
W + ST

PLYMOUTH TWP T2N R11E

52 1 S 1/4

38 ch 92 LKS POB
E RD 1/4 CH
SEC COR SEC 3 S 1/4 COR SEC 3

PORTER TWP T4N R11E

60 1 N 1/4

91 15 NW

11.02 ch
N 1/4 COR SEC 1
RD

NW SEC 15
5.00 ch
x RD

TURTLE TWP T1N R13E

35 14 SE

31, 32 9 N 1/4

3 27 NE

11 29 SE

3 28 NE

3 30 SE

E RD AT CORNER
E RD AT CORNER
E RD AT CORNER

2 CH 14 LKS
x E RD SE COR SEC 36

10 8 5/100 CH
NE COR SEC 28
STAKE ON SECTION LINE
E RD
RD
40 LKS
N 1/4 COR SEC 9

SE COR SEC 14
RD
2 CH 54 LK
ALONG SECTION LINE