

U.S. PUBLIC LAND SURVEY MONUMENT RECORD

For Public Land Survey Corners In:
T. 4 N. R. 14 E. 4th P.M.
CORNER CODE INDEX

WI ADMINISTRATIVE CODE A-E 7.08 REQUIREMENT
REV 10/23/2004 USMONREC.DWG

LIMA TWP

ROCK COUNTY WI

IF AVAILABLE
ROCK COUNTY COORDINATES PREFERRED

1	2	3	4	5	6	7	8	9	10	11	12	13	14	15	16	17	18	19	20	21	22	23	24	25	
A																									A
B	6					5					4				3					2				1	B
C																									C
D																									D
E																									E
F																									F
G	7					8					9				10					11				12	G
H																									H
J																									J
K																									K
L	18					17					16				15					14				13	L
M																									M
N																									N
O																									O
P	19					20					21				22					23				24	P
Q																									Q
R																									R
S																									S
T	30					29					28				27					26				25	T
U																									U
V																									V
W																									W
X	31					32					33				34					35				36	X
Y																									Y
Z																									Z

North _____ Elev. _____

East _____

Hor. Datum _____ Vert. Datum _____

LATITUDE _____ ELLIPS. HT. _____

LONGITUDE _____

NAD83(91) _____ NETWORK ADJ. YR _____

GPS (X) _____ TRAVERSE (X) _____

BASED ON THE FOLLOWING CONTROL:

PLACE MONUMENT SYMBOL AT PROPER LOCATION ON ABOVE INDEX

CORNER MONUMENT

WITNESS MONUMENT

(a)

BEARINGS ARE BASED ON: _____

FIELD BOOK _____ PAGE # _____

SHEET 1 OF 1

SHOW A PLAN VIEW DRAWING DEPICTING THE CORNER MONUMENT AND SURROUNDING PHYSICAL FEATURES, INCLUDING THE EXCAVATION AREA AND DEPTH.

PLANNING & ZONING COMMITTEE ADOPTED THIS FORM ON 12/2/1982

CORNER CODE R-25 (1)

RECORD OF U. S. PUBLIC LAND SURVEY CONTROL STATION

U. S. PUBLIC LAND SURVEY CORNER 24/19 T 4 N, R 14/15 E, ROCK/WALWORTH COUNTY, WISCONSIN
25/30

HORIZONTAL CONTROL SURVEY BY: AYRES ASSOCIATES YEAR: 2004
 VERTICAL CONTROL SURVEY BY: AYRES ASSOCIATES YEAR: 2004

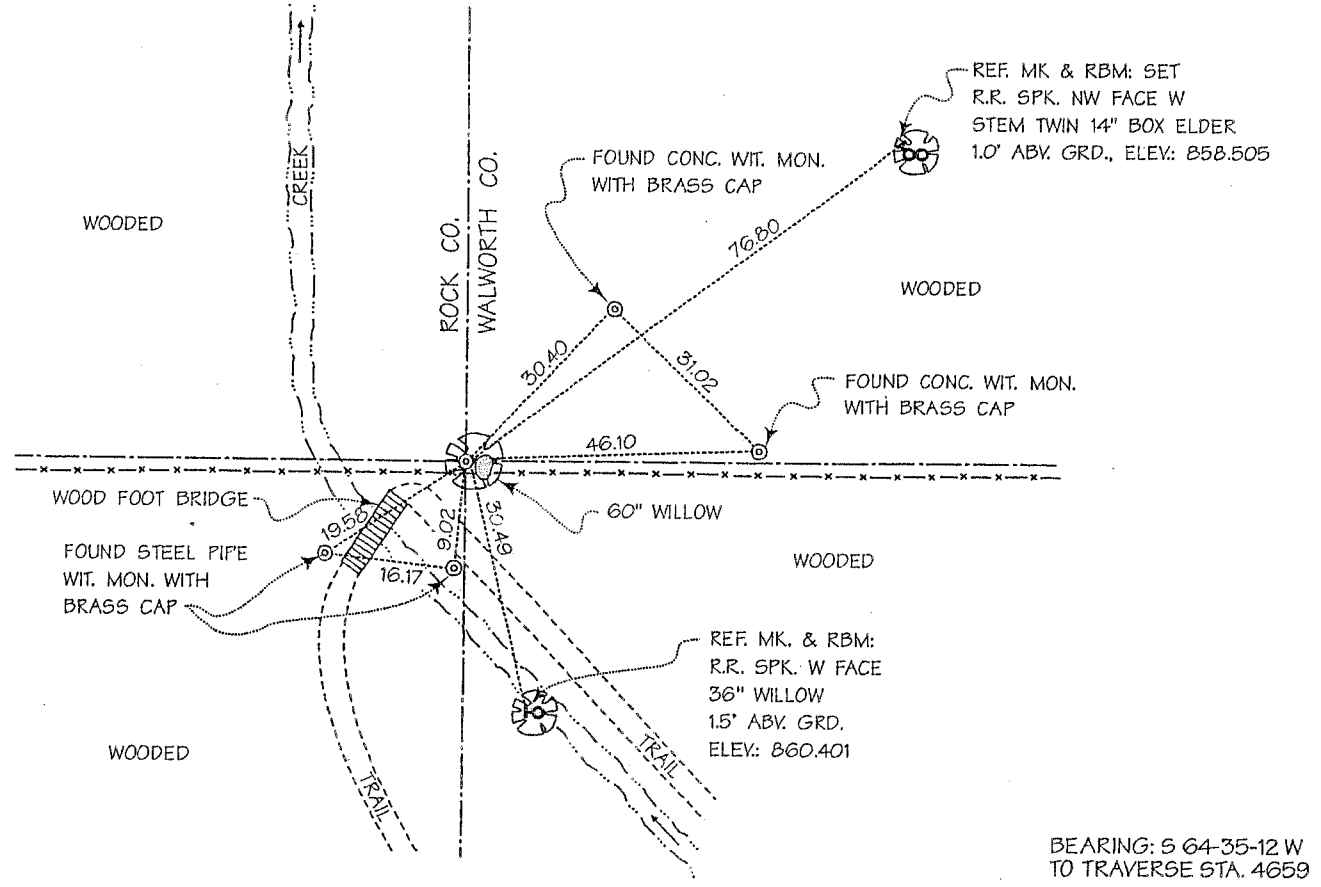
STATE PLANE COORDINATES OF: SECTION CORNER
 NORTH 288,046.35
 EAST 2,327,999.66
 ELEVATION OF STATION: 859.025

HORIZONTAL DATUM: WISCONSIN STATE PLANE COORDINATE SYSTEM, SOUTH ZONE
 NORTH AMERICAN DATUM OF 1927

VERTICAL DATUM: NATIONAL GEODETIC VERTICAL DATUM OF 1929 THETA ANGLE: +0-50-22

CONTROL ACCURACY: HORIZONTAL: THIRD ORDER, CLASS I VERTICAL: SECOND ORDER, CLASS II

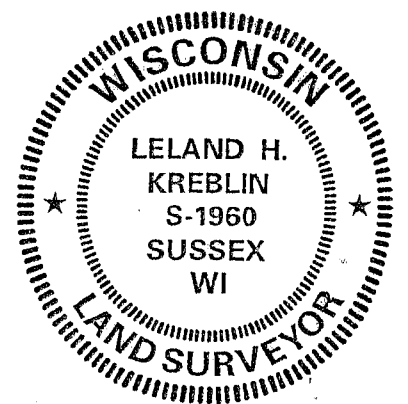
LOCATION SKETCH:



SURVEYOR'S AFFIDAVIT:

STATE OF WISCONSIN) SS
WALWORTH COUNTY)

As Walworth County Surveyor, I hereby certify that I set three-inch-diameter by 36-inch-long iron pipe with SEWRPC brass cap; replacing a two-inch-diameter by 30-inch-long iron pipe found marking this corner in June 1982 by Donald A. Barnes, S-1216, Rock County Surveyor; said pipe having also been found marking this corner in June 1989 by Lloyd L. Jensen, S-211, Walworth County Surveyor; that I referenced the same as shown hereon; and that this record is correct and complete to the best of my knowledge and belief.



DATE OF SURVEY: 26 OCTOBER 2004
 REVISED: 6 JUNE 2005
 REGISTERED LAND SURVEYOR Leland H. Kreblin

S - 1960

R-25(1)